

# RNAV (RNP) Z RWY 13R

SAN ANTONIO INTL (SAT)

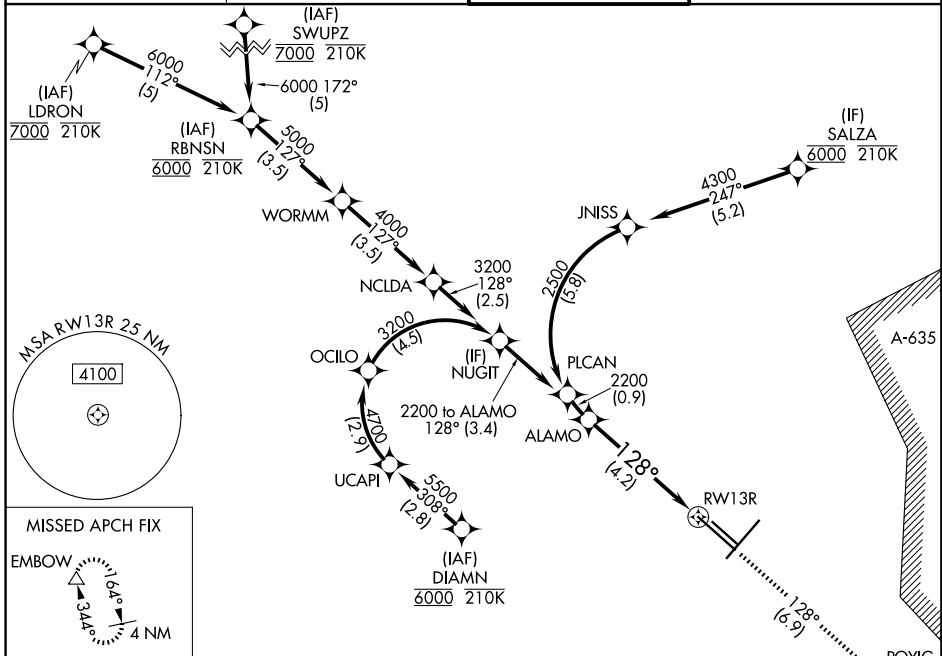
APP CRS	Rwy Ldg	<b>8502</b>
<b>128°</b>	TDZE	<b>809</b>
	Apt Elev	<b>809</b>

RNP AR APCH - GPS.

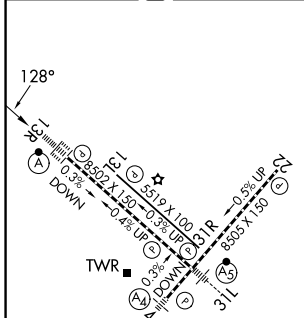
▼ For uncompensated Baro-VNAV systems, procedure NA below -5°C or above 54°C. For inop ALS, increase RNP 0.3 all Cats visibility to RVR 6000.

ALS-2 MISSED APPROACH: (Do not exceed 210K until POYIG) Climb to 3100 on track 128° to POYIG and track 171° to EMBOW and hold.

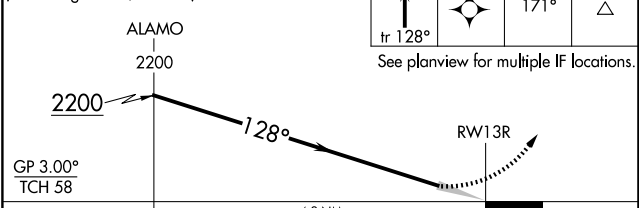
D-ATIS <b>118.9</b>	SAN ANTONIO APP CON <b>125.1 307.0</b>	SAN ANTONIO TOWER <b>119.8 257.8</b>	GND CON <b>121.9 348.6</b>
------------------------	---	---	-------------------------------



ELEV 809	<b>D</b>	TDZE 809
----------	----------	----------



VGSI and RNAV glidepath not coincident (VGSI Angle 3.00/TCH 75).



GP 3.00°	TCH 58	3100	POYIG	EMBOW
		tr 128°	tr 171°	
See planview for multiple IF locations.				
CATEGORY	A	B	C	D
RNP 0.15 DA		1137/26	328 (400-½)	
RNP 0.30 DA		1218/40	409 (500-¾)	

TDZL/RCLS Rwy 13R  
REIL Rwy 13L, 22 and 31R  
HIRL Rwy 4-22 and 13R-31L  
MIRL Rwy 13L-31R

**AUTHORIZATION REQUIRED**

SC-3, 19 MAR 2026 to 16 APR 2026

SC-3, 19 MAR 2026 to 16 APR 2026