

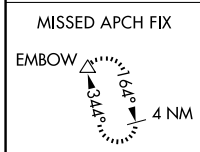
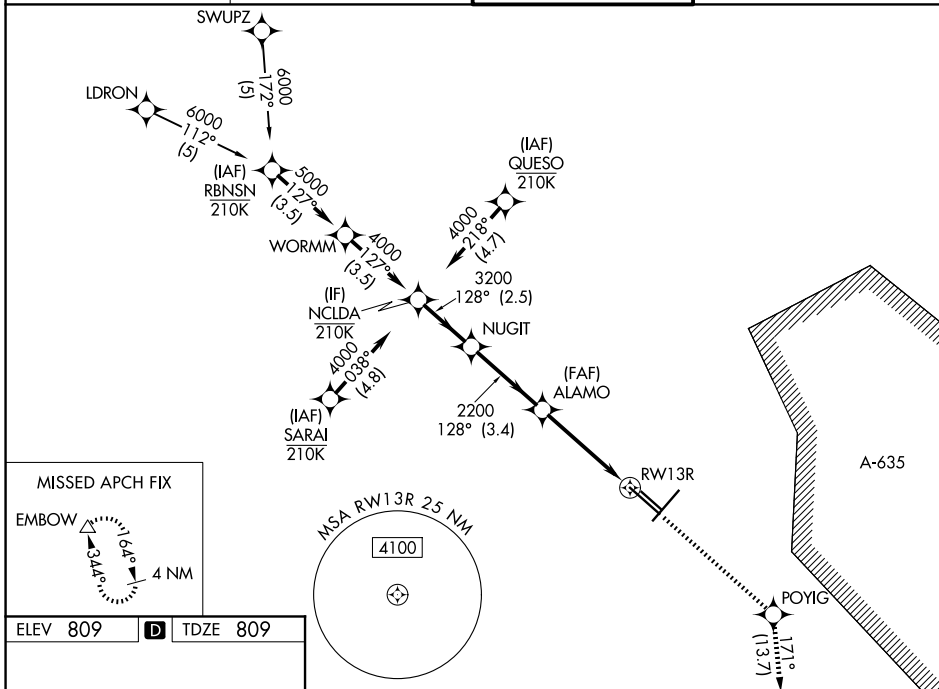
WAAS CH 82409 W13A	APP CRS 128°	Rwy Ldg TDZE 809 Apt Elev 809	8502
--	------------------------	---	-------------

RNAV (GPS) Y RWY 13R

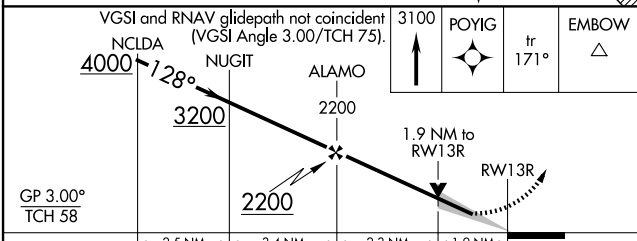
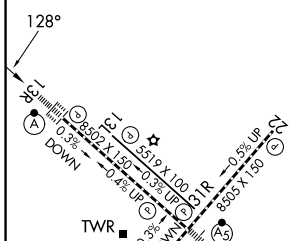
SAN ANTONIO INTL (SAT)

RNP APCH - GPS.		ALSF-2 	MISSED APPROACH: Climb to 3100 direct POYIG and on track 171° to EMBOW and hold.
<p> Circling NA northwest of Rwys 4 and 13R. For uncompensated Baro-VNAV systems, LNAV/VNAV NA below -5°C or above 54°C. For inop ALS, increase LNAV/VNAV all Cats visibility to RVR 6000 and LNAV Cats C and D visibility to 1% SM.</p>			

D-ATIS 118.9	SAN ANTONIO APP CON 125.1 307.0	SAN ANTONIO TOWER 119.8 257.8	GND CON 121.9 348.6
------------------------	---	---	-------------------------------



ELEV 809	D	TDZE 809
-----------------	----------	-----------------



CATEGORY	A	B	C	D
LPV DA		1009/18	200 (200-½)	
LNAV/VNAV DA		1221/40	412 (500-¾)	
LNAV MDA	1480/24	671 (700-½)	1480-1½	671 (700-1½)
CIRCLING	1480-1	671 (700-1)	1480-2 671 (700-2)	1520-2¼ 711 (800-2¼)

TDZL/RCLS Rwy 13R
REIL Rwys 13L, 22 and 31R
HIRL Rwys 4-22 and 13R-31L
MIRL Rwy 13L-31R

SC-3, 19 MAR 2026 to 16 APR 2026

SC-3, 19 MAR 2026 to 16 APR 2026