

(TJANO2.TJANO) 25219

AL-369 (FAA)

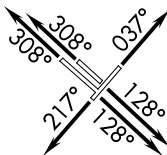
SAN ANTONIO INTL (SAT)  
SAN ANTONIO, TEXAS

# TJANO TWO DEPARTURE (RNAV)

SAN ANTONIO DEP CON  
125.7 290.225 (13L/R, 22, 31L/R)  
127.1 269.1 (4)  
D-ATIS  
118.9  
CLNC DEL  
126.7  
CPDLC  
GND CON  
121.9 348.6  
SAN ANTONIO TOWER  
119.8 257.8

RNAV 1 - DME/DME IRU or GPS.  
RADAR required for non-GPS  
equipped aircraft. RADAR required.

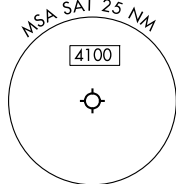
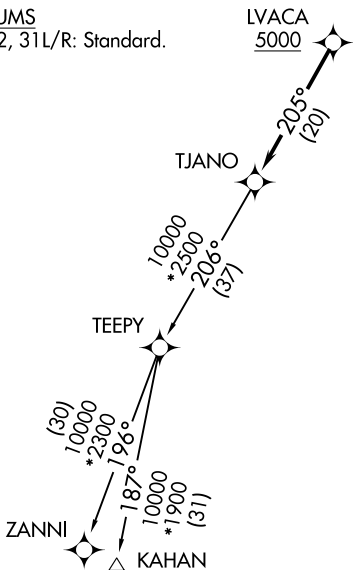
**TOP ALTITUDE:  
5000**



### TAKEOFF MINIMUMS

Rwys 4, 13L/R, 22, 31L/R: Standard.

LVACA  
5000



NOTE: Chart not to scale.

### DEPARTURE ROUTE DESCRIPTION

TAKEOFF RUNWAY 4: Climb on heading 037° or as assigned by ATC, for vectors to LVACA, thence. . .

TAKEOFF RUNWAYS 13L/R: Climb on heading 128° or as assigned by ATC, for vectors to LVACA, thence. . .

TAKEOFF RUNWAY 22: Climb on heading 217° or as assigned by ATC, for vectors to LVACA, thence. . .

TAKEOFF RUNWAYS 31L/R: Climb on heading 308° or as assigned by ATC, for vectors to LVACA, thence. . .

. . .on track 205° to TJANO, then on transition. Maintain 5000. Expect filed altitude 10 minutes after departure.

KAHAN TRANSITION (TJANO2.KAHAN)

ZANNI TRANSITION (TJANO2.ZANNI)

# TJANO TWO DEPARTURE (RNAV)

(TJANO2.TJANO) 07AUG25

SAN ANTONIO, TEXAS  
SAN ANTONIO INTL (SAT)

SC-3, 19 MAR 2026 to 16 APR 2026

SC-3, 19 MAR 2026 to 16 APR 2026