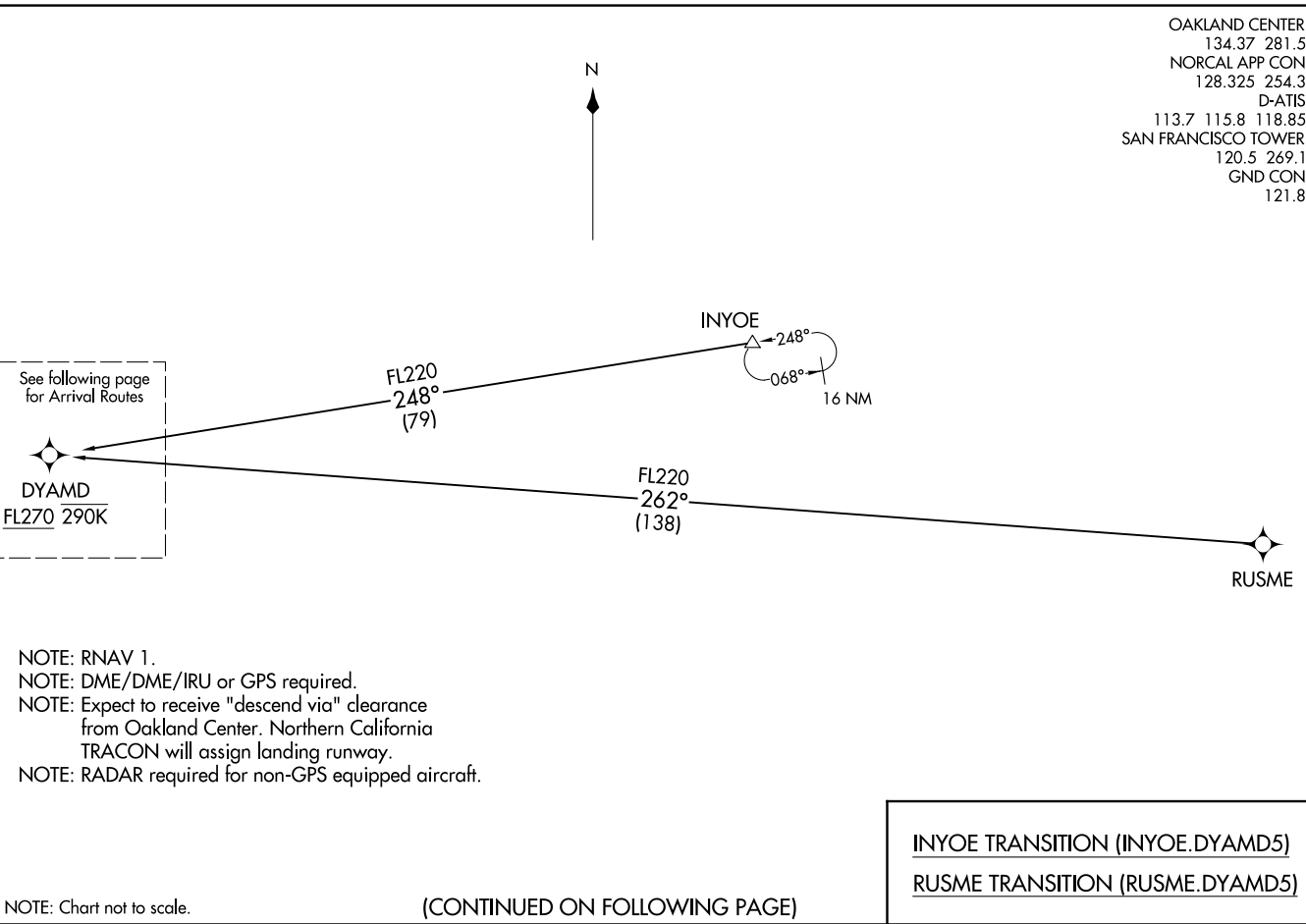


DYAMD FIVE ARRIVAL (RNAV) Transition Routes
(DYAMD.DYAMD5) 03JAN19

SAN FRANCISCO, CALIFORNIA
SAN FRANCISCO INTL (SFO)



OAKLAND CENTER 134.37 281.5
 NORCAL APP CON 128.325 254.3
 D-ATIS 113.7 115.8 118.85
 SAN FRANCISCO TOWER 120.5 269.1
 GND CON 121.8

(DYAMD.DYAMD5) 19003
DYAMD FIVE ARRIVAL (RNAV) Transition Routes AL-375 (FAI)

SAN FRANCISCO INTL (SFO)
SAN FRANCISCO, CALIFORNIA

- NOTE: RNAV 1.
- NOTE: DME/DME/IRU or GPS required.
- NOTE: Expect to receive "descend via" clearance from Oakland Center. Northern California TRACON will assign landing runway.
- NOTE: RADAR required for non-GPS equipped aircraft.

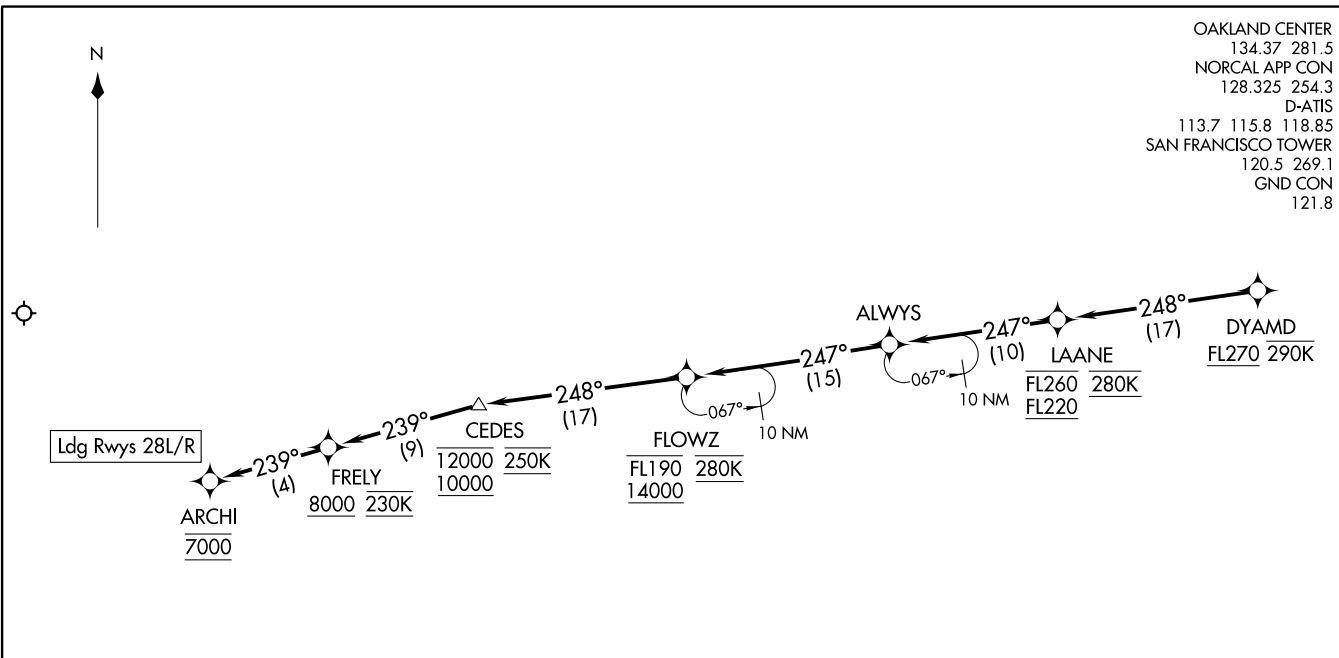
INYOE TRANSITION (INYOE.DYAMD5)
RUSME TRANSITION (RUSME.DYAMD5)

(CONTINUED ON FOLLOWING PAGE)

NOTE: Chart not to scale.

DYAMD FIVE ARRIVAL (RNAV) Arrival Routes
 (DYAMD: DYAMD5) 03JAN19

SAN FRANCISCO, CALIFORNIA
 SAN FRANCISCO INTL (SFO)



OAKLAND CENTER
 134.37 281.5
 NORCAL APP CON
 128.325 254.3
 D-ATIS
 113.7 115.8 118.85
 SAN FRANCISCO TOWER
 120.5 269.1
 GND CON
 121.8

(DYAMD: DYAMD5) 19003
 DYAMD FIVE ARRIVAL (RNAV) Arrival Routes
 AL-375 (FAA)

SAN FRANCISCO INTL (SFO)
 SAN FRANCISCO, CALIFORNIA

NOTE: RNAV 1.
 NOTE: DME/DME/IRU or GPS required.
 NOTE: Expect to receive "descend via" clearance from Oakland Center. Northern California TRACON will assign landing runway.
 NOTE: RADAR required for non-GPS equipped aircraft.

NOTE: Chart not to scale.

ARRIVAL ROUTE DESCRIPTION

From DYAMD on track 248° to cross LAANE between FL220 and FL260 and at 280K, then on track 247° to ALWAYS.

LANDING RUNWAYS 28L/R: From ALWAYS on track 247° to cross FLOWZ between 14000 and FL190 and at 280K, then on track 248° to cross CEDES between 10000 and 12000 and at 250K, then on track 239° to cross FRELY at or above 8000 and at 230K, then on track 239° to cross ARCHI at 7000. Expect assigned instrument approach procedure.