

EL TORO FIVE DEPARTURE  
(ELB5, ELB) 16MAY24

JOHN WAYNE/ORANGE COUNTY (SNA)  
SANTA ANA, CALIFORNIA

SOCAL DEP CON  
133.85 346.35  
D-ATIS  
126.0  
CLINC DEL  
118.0  
GND CON  
120.8

EL TORO  
117.2 ELB  
Chan 119

SANTA CATALINA  
114.15 SXC  
Chan 88(Y)

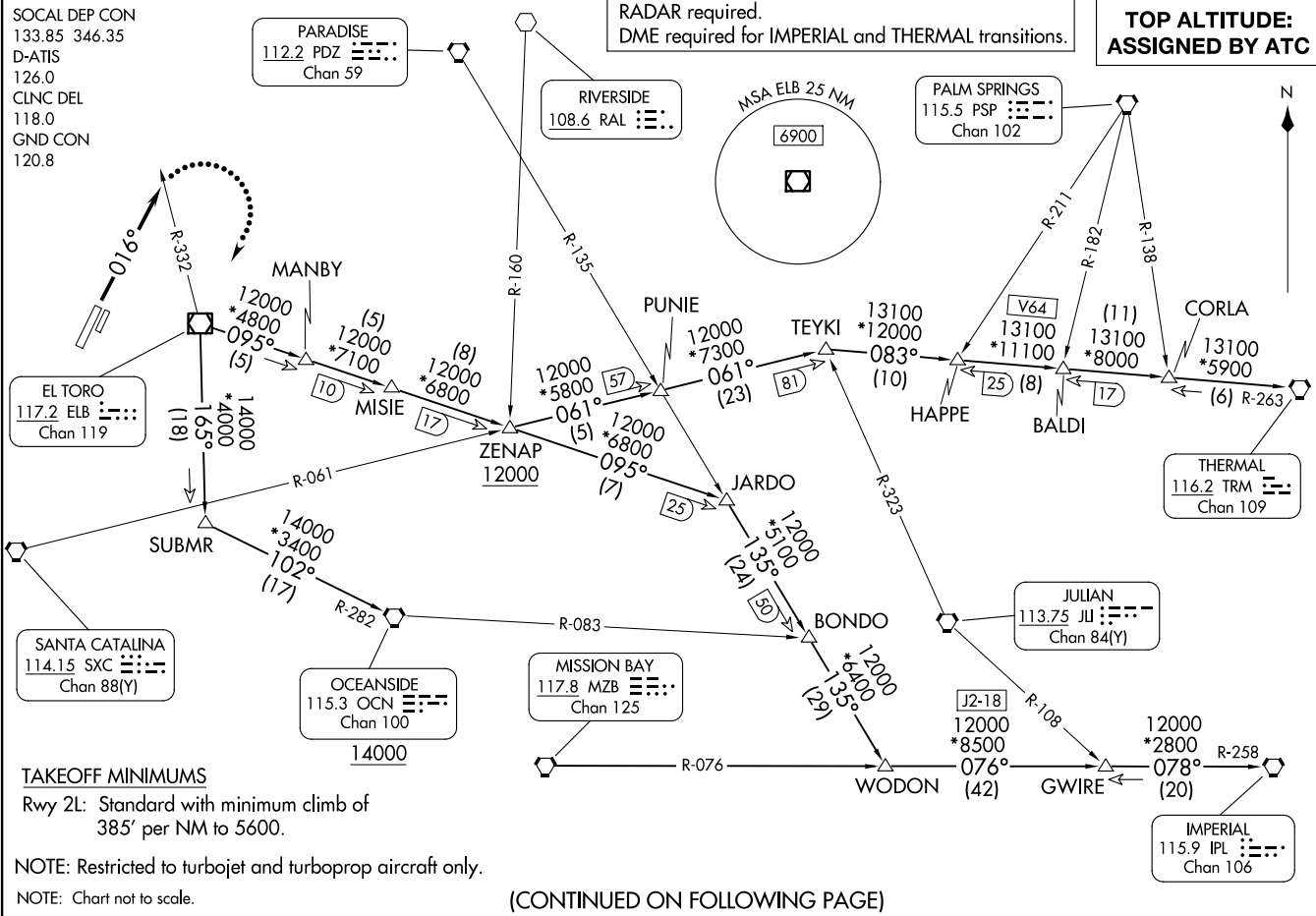
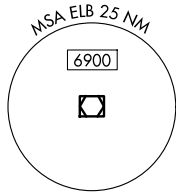
PARADISE  
112.2 PDZ  
Chan 59

RIVERSIDE  
108.6 RAL  
Chan 102

PALM SPRINGS  
115.5 PSP  
Chan 102

THERMAL  
116.2 TRM  
Chan 109

TOP ALTITUDE:  
ASSIGNED BY ATC



**TAKEOFF MINIMUMS**  
Rwy 2L: Standard with minimum climb of 385' per NM to 5600.  
NOTE: Restricted to turbojet and turboprop aircraft only.  
NOTE: Chart not to scale.

(CONTINUED ON FOLLOWING PAGE)

(ELB5, ELB) 25275  
EL TORO FIVE DEPARTURE

JOHN WAYNE/ORANGE COUNTY (SNA)  
SANTA ANA, CALIFORNIA  
AL-377 (FAA)



DEPARTURE ROUTE DESCRIPTION

TAKEOFF RUNWAY 2L: Climb on heading 016° for RADAR vectors to ELB VOR/DME, thence . . . .

. . . .(transition) or (assigned route). Maintain ATC assigned altitude. Expect filed altitude ten minutes after departure.

LOST COMMUNICATIONS: If not in contact with departure control by ELB R-332, turn right direct ELB VOR/DME, climb to 7000 and proceed on assigned transition or route. Climb to filed altitude ten minutes after departure.

IMPERIAL TRANSITION (ELB5.IPL): From over ELB VOR/DME on ELB R-095 to JARDO, then on PDZ R-135 to WODON, then on MZB R-076 and IPL R-258 to GWIRE, then on IPL R-258 to IPL VORTAC.

OCEANSIDE TRANSITION (ELB5.OCN): From over ELB VOR/DME on ELB R-165 to SUBMR, then on OCN R-282 to OCN VORTAC.

THERMAL TRANSITION (ELB5.TRM): From over ELB VOR/DME on ELB R-095 to ZENAP, then on SXC R-061 to TEYKI, then on TRM R-263 to TRM VORTAC.

SW-3, 19 MAR 2026 to 16 APR 2026

SW-3, 19 MAR 2026 to 16 APR 2026