

**TOP ALTITUDE:
13000**

- NOTE: RADAR required.
- NOTE: RNAV-1.
- NOTE: DME/DME/IRU or GPS required.
- NOTE: Turbojet and turboprop only.
- NOTE: Parachute jumping all hours, 14000' and below, north of route between PIGGN and FNCHH.
- NOTE: Aircraft may be RADAR vectored to DANAH or PIGGN.

TAKEOFF MINIMUMS

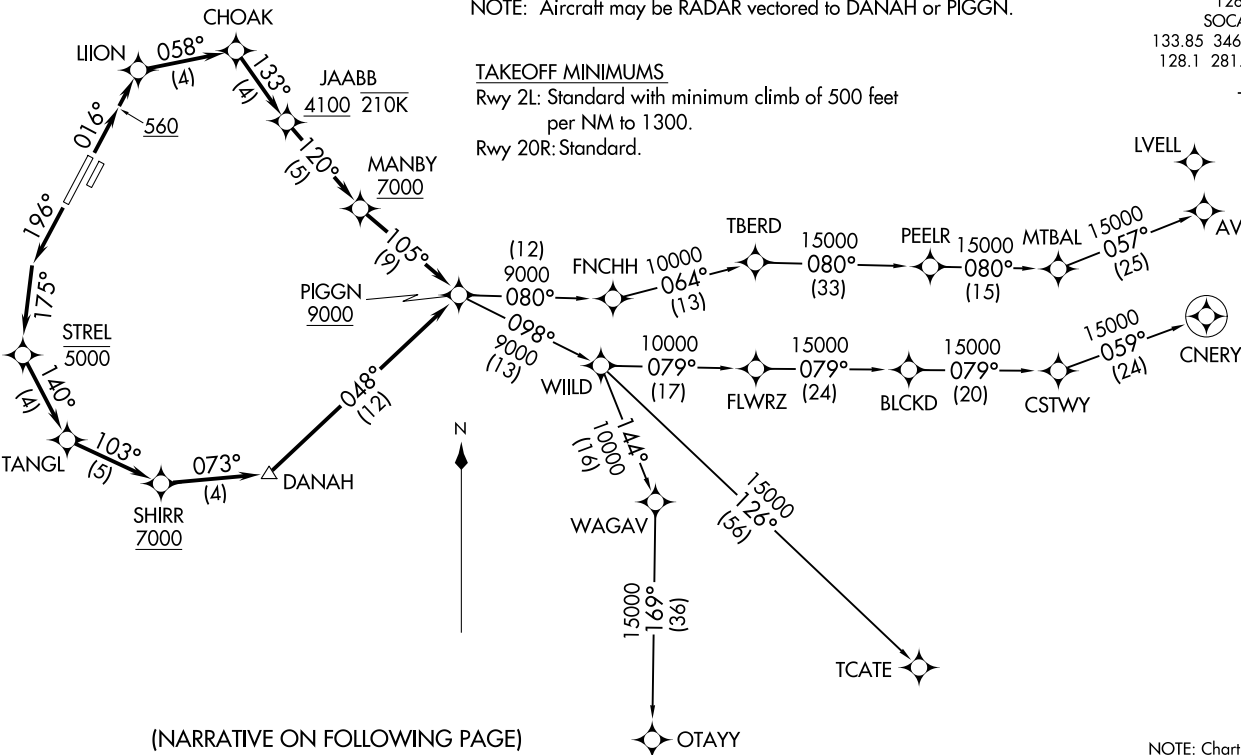
Rwy 2L: Standard with minimum climb of 500 feet per NM to 1300.
 Rwy 20R: Standard.

D-ATIS 126.0
 CLNC DEL 118.0
 CPDLC
 GND CON 120.8
 JOHN WAYNE TOWER * 126.8 343.625
 SOCAL DEP CON 133.85 346.35 (Rwy 2L)
 128.1 281.4 (Rwy 20R)

TTRUE ✦
 WURMO ✦

LVLL ✦
 AVRRY ✦

✦
 CNERY ✦



(NARRATIVE ON FOLLOWING PAGE)

NOTE: Chart not to scale.

PIGGN THREE DEPARTURE (RNAV)
(PIGGN3.PIGGN) 24MAR22

SANTA ANA, CALIFORNIA
JOHN WAYNE/ORANGE COUNTY (SNA)

(PIGGN3.PIGGN) 22251
PIGGN THREE DEPARTURE (RNAV)

AL-37Z (FAA)
JOHN WAYNE/ORANGE COUNTY (SNA)
SANTA ANA, CALIFORNIA



DEPARTURE ROUTE DESCRIPTION

TAKEOFF RUNWAY 2L: Climb on heading 016° to 560, then direct LIION, then on track 058° to CHOAK, then on track 133° to cross JAABB at or above 4100 and at or below 210K, then on track 120° to cross MANBY at or above 7000, then on track 105° to cross PIGGN at or above 9000, thence. . . .

TAKEOFF RUNWAY 20R: Climb on heading 196° to intercept course 175° to cross STREL at or below 5000, then on track 140° to TANGL, then on track 103° to cross SHIRR at or above 7000, then on track 073° to DANAH, then on track 048° to cross PIGGN at or above 9000, thence. . . .

. . . . on (transition) maintain 13000. Expect filed altitude 10 minutes after departure.

AVRRY TRANSITION (PIGGN3.AVRRY)

CNERY TRANSITION (PIGGN3.CNERY)

OTAYY TRANSITION (PIGGN3.OTAYY)

TCATE TRANSITION (PIGGN3.TCATE)

SW-3, 19 MAR 2026 to 16 APR 2026

SW-3, 19 MAR 2026 to 16 APR 2026