


LOC/DME I-RMT 110.35 Chan 40 (Y)	APP CRS 126°	Rwy Ldg 8279 TDZE 3963 Apt Elev 3967
---	------------------------	--

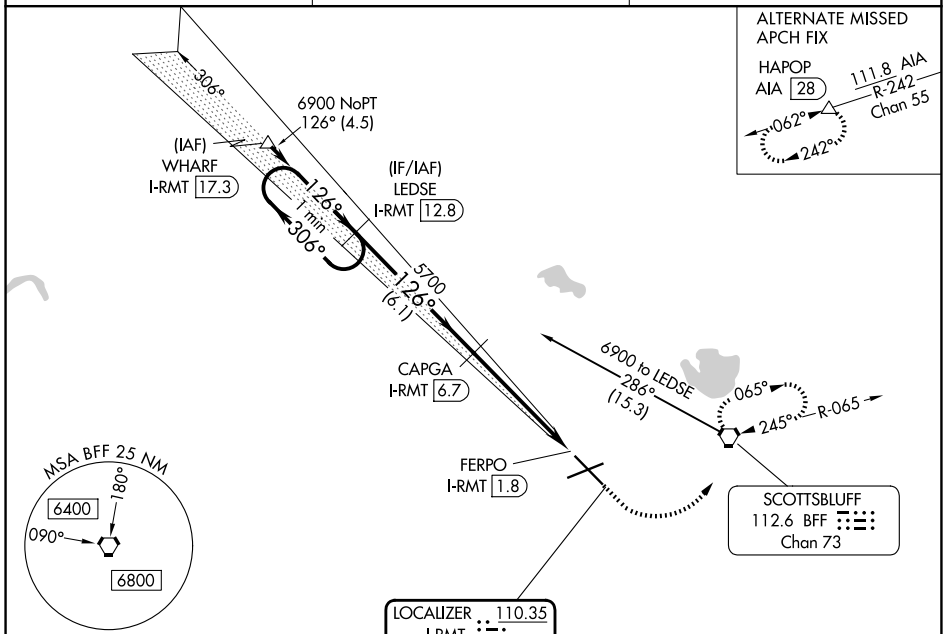
ILS or LOC/DME RWY 12

SCOTTSBLUFF/WESTERN NEBRASKA RGNL/WM B HEILIG FLD (B'F'F')

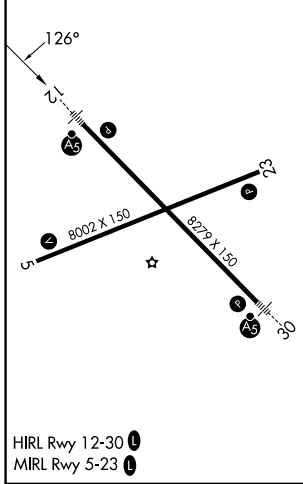
⚠ When local altimeter setting not received, use Alliance altimeter setting and increase DA 91 feet; all MDAs 100 feet, and S-LOC 12 and Circling Cat B/C/D visibilities ¼ mile. For inoperative MALSR, when using Alliance altimeter setting, increase S-ILS 12 visibility to 1. VDP NA when using Alliance altimeter setting.

MALSR  **MISSED APPROACH:** Climb to 4500 then climbing left turn to 6900 direct BFF VORTAC and hold, continue climb-in-hold to 6900.

ASOS 121.025	DENVER CENTER 127.95 338.2	UNICOM 123.0 (CTAF) 0
------------------------	--------------------------------------	---------------------------------

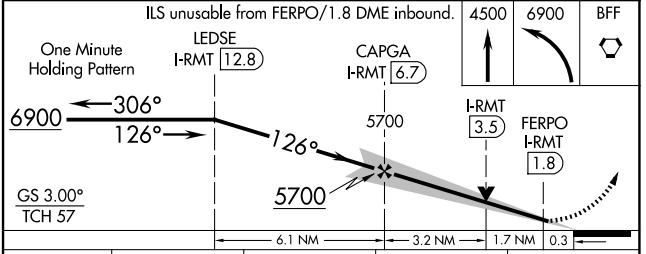


ELEV 3967	D	TDZE 3963
-----------	----------	-----------



SCOTTSBLUFF, NEBRASKA
Orig-B 30JAN20

DME REQUIRED



CATEGORY	A	B	C	D
S-ILS 12	4163-½ 200 (200-½)			
S-LOC 12	4640-½ 677 (700-½)	4640-1½ 677 (700-1½)	4640-1¾ 677 (700-1¾)	4640-1¾ 677 (700-1¾)
CIRCLING	4640-1 673 (700-1)	4640-2 673 (700-2)	4740-2½ 773 (800-2½)	4740-2½ 773 (800-2½)

SCOTTSBLUFF/WESTERN NEBRASKA RGNL/WM B HEILIG FLD (B'F'F')
41°52'N-103°36'W

ILS or LOC/DME RWY 12

NC-2, 19 MAR 2026 to 16 APR 2026

NC-2, 19 MAR 2026 to 16 APR 2026