

27NOV25

SPokane Eight Departure

SPokane, Washington
Spokane Intl (GEG)

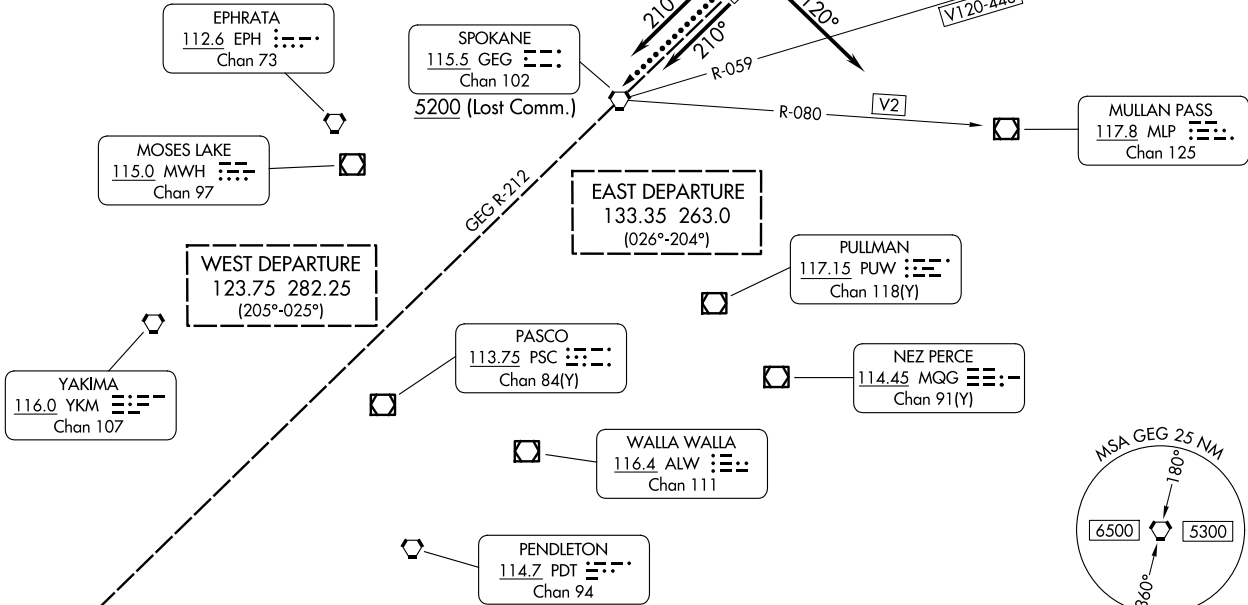
RADAR required

**TOP ALTITUDE:
6000**

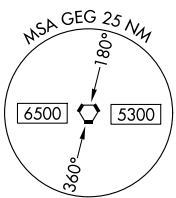
ATIS
124.325 254.375
CLNC DEL
127.55
GND CON
121.9 348.6
SPOKANE TOWER
118.3 278.3

TAKEOFF MINIMUMS

Rwys 3, 8: Standard with minimum climb of 320'/NM to 5300.
Rwys 21, 26: Standard with minimum climb of 250'/NM to 5200.



(CONTINUED ON FOLLOWING PAGE)



NOTE: Chart not to scale.

25331
SPokane Eight Departure
AL-403 (FAA)
Spokane Intl (GEG)
Spokane, Washington



DEPARTURE ROUTE DESCRIPTION

TAKEOFF RUNWAY 3: Climb on heading 030° (or ATC assigned heading) for vectors to assigned route/fix, thence

TAKEOFF RUNWAY 8: Climbing right turn heading 120° (or ATC assigned heading) for vectors to assigned route/fix, thence

TAKEOFF RUNWAY 21: Climb on heading 210° (or ATC assigned heading) for vectors to assigned route/fix, thence

TAKEOFF RUNWAY 26: Climbing left turn heading 210° (or ATC assigned heading) for vectors to assigned route/fix, thence

. . . . maintain 6000, expect filed altitude 10 minutes after departure.

LOST COMMUNICATIONS

Climb direct GEG VORTAC before proceeding on course.

Aircraft north eastbound V1 20-448 and eastbound V2: Climb direct GEG VORTAC, cross GEG VORTAC at or above 5200.

Aircraft departing Rwy 3: If not in contact with ATC within 10 NM after takeoff, turn left direct GEG VORTAC, cross GEG VORTAC at or above 5200, thence on assigned route/fix.

NW-1, 19 MAR 2026 to 16 APR 2026

NW-1, 19 MAR 2026 to 16 APR 2026