

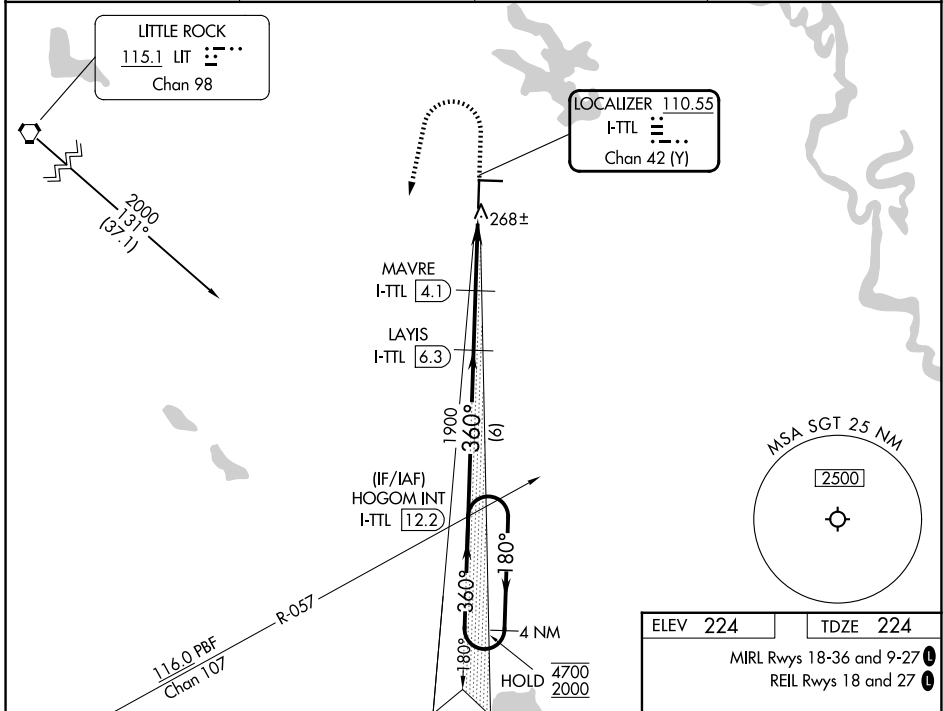
LOC/DME I-TTL 110.55 Chan 42 (Y)	APP CRS 360°	Rwy Ldg TDZE 224 Apt Elev 224
---	------------------------	---

ILS or LOC RWY 36

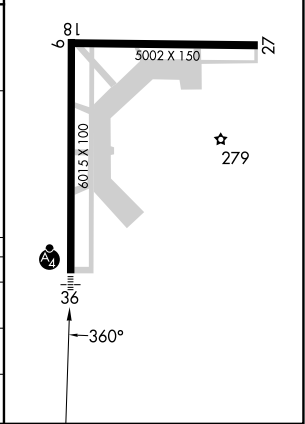
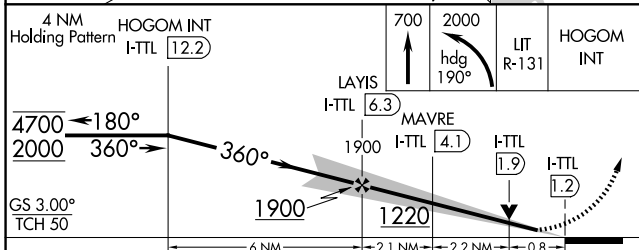
STUTTGART MUNI CARL HUMPHREY FLD (SGT)

DME required.	MALSF	MISSED APPROACH: Climb to 700 then climbing left turn to 2000 on heading 190° and on IIT VORTAC R-131 to HOGOM INT/I-TTL 12.2 DME and hold.
<p>⚠ Rwy 36 helicopter visibility reduction below 3/4 SM NA. Inop table does not apply to S-ILS 36 all Cats. Circling Rwy 9, 27 NA at night. For inop ALS, increase S-LOC 36 Cat C and D visibility to 7/8 SM.</p>		

AWOS-3PT 119,025	LITTLE ROCK APP CON 135.4 353.6	CLNC DEL 123.7	UNICOM 122.8 (CTAF)
----------------------------	---	--------------------------	-------------------------------



ELEV 224	TDZE 224
MIRL Rwy 18-36 and 9-27	
REIL Rwy 18 and 27	



CATEGORY	A	B	C	D
S-ILS 36		424-3/4	200 (200-3/4)	
S-LOC 36		520-3/4	296 (300-3/4)	
CIRCLING	660-1 436 (500-1)	680-1 456 (500-1)	760-1 1/2 536 (600-1 1/2)	860-2 636 (700-2)

SC-1, 19 MAR 2026 to 16 APR 2026

SC-1, 19 MAR 2026 to 16 APR 2026