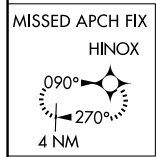


APP CRS	Rwy Ldg	<b>5002</b>
<b>270°</b>	TDZE	<b>222</b>
	Apt Elev	<b>224</b>

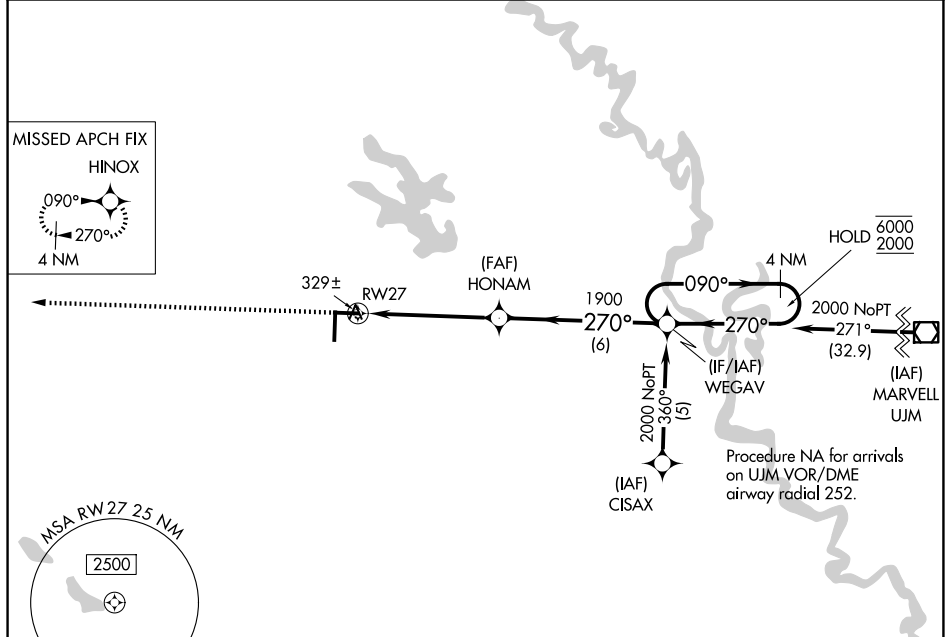
# RNAV (GPS) RWY 27

STUTTGART MUNI CARL HUMPHREY FLD (SGT)

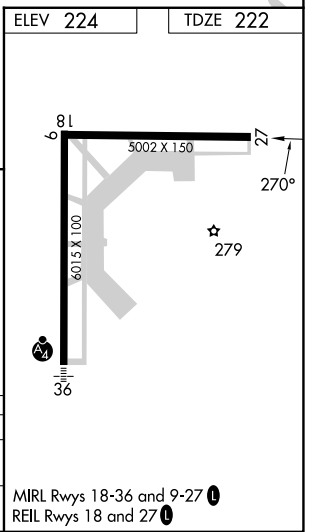
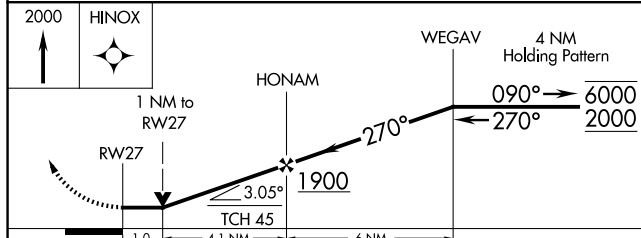
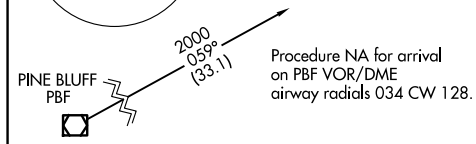
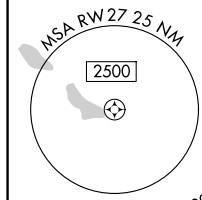
RNP APCH - GPS.		MISSED APPROACH: Climb to 2000 direct HINOX and hold.	
Rwy 27 helicopter visibility reduction below 3/4 SM NA.		AWOS-3PT	LITTLE ROCK APP CON
		<b>119.025</b>	<b>135.4 353.6</b>
		CLNC DEL	UNICOM
		<b>123.7</b>	<b>122.8 (CTAF) 0</b>



SC-1, 19 MAR 2026 to 16 APR 2026



SC-1, 19 MAR 2026 to 16 APR 2026



CATEGORY	A	B	C	D
LNAV MDA	580-1 358 (400-1)			
CIRCLING	660-1 436 (500-1)	680-1 456 (500-1)	760-1½ 536 (600-1½)	860-2 636 (700-2)

MIRL Rwy 18-36 and 9-27 0

REIL Rwy 18 and 27 0