

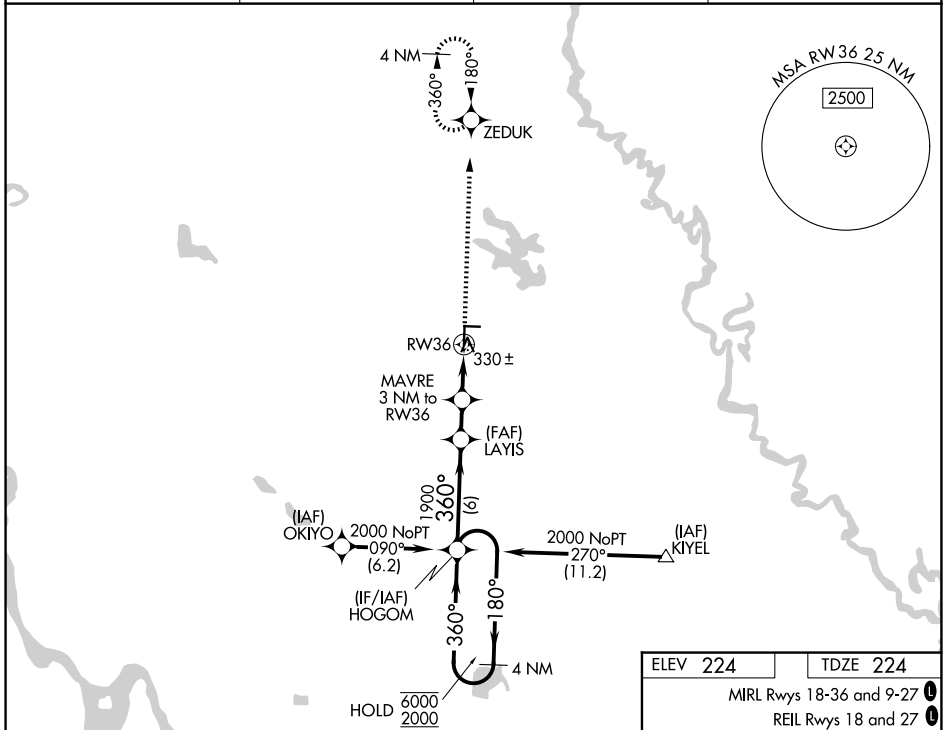
WAAS CH 97311 W36A	APP CRS 360°	Rwy Ldg TDZE 224 Apt Elev 224
--	------------------------	---

RNAV (GPS) RWY 36

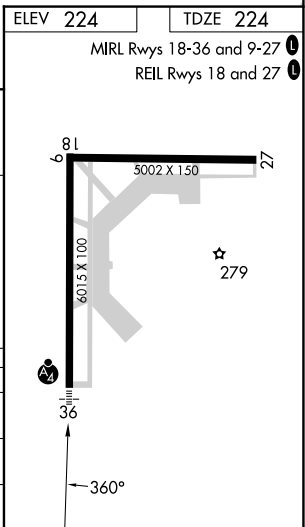
STUTTGART MUNI CARL HUMPHREY FLD (SGT)

RNP APCH - GPS.	MALSIF	MISSED APPROACH: Climb to 2000 direct ZEDUK and hold.
Circling Rwy 9, 27 NA at night. Inop table does not apply to LPV all Cats.		

AWOS-3PT 119.025	LITTLE ROCK APP CON 135.4 353.6	CLNC DEL 123.7	UNICOM 122.8 (CTAF)
----------------------------	---	--------------------------	-------------------------------



4 NM Holding Pattern		HOGOM		2000		ZEDUK	
6000 ← 180°		360° →		360°		1900	
GP 3.00°		TCH 50		1900		1220	
6 NM		2.1 NM		2 NM		1 NM	
LAYS		MAVRE 3 NM to RW36		1 NM to RW36		RW36	
CATEGORY	A	B	C	D			
LPV DA		474-¾	250 (300-¾)				
LNAV MDA		620-¾	396 (400-¾)				
CIRCLING	660-1 436 (500-1)	680-1 456 (500-1)	760-1½ 536 (600-1½)	860-2 636 (700-2)			



SC-1, 19 MAR 2026 to 16 APR 2026

SC-1, 19 MAR 2026 to 16 APR 2026