

HI-TACAN RWY 31

TACAN Chan 53	FOE	APCH CRS 304°	Rwy ldg 12,803 TDZE 1037 Arprt Elev 1078
-------------------------	-----	-------------------------	---

[USAF]

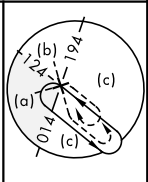
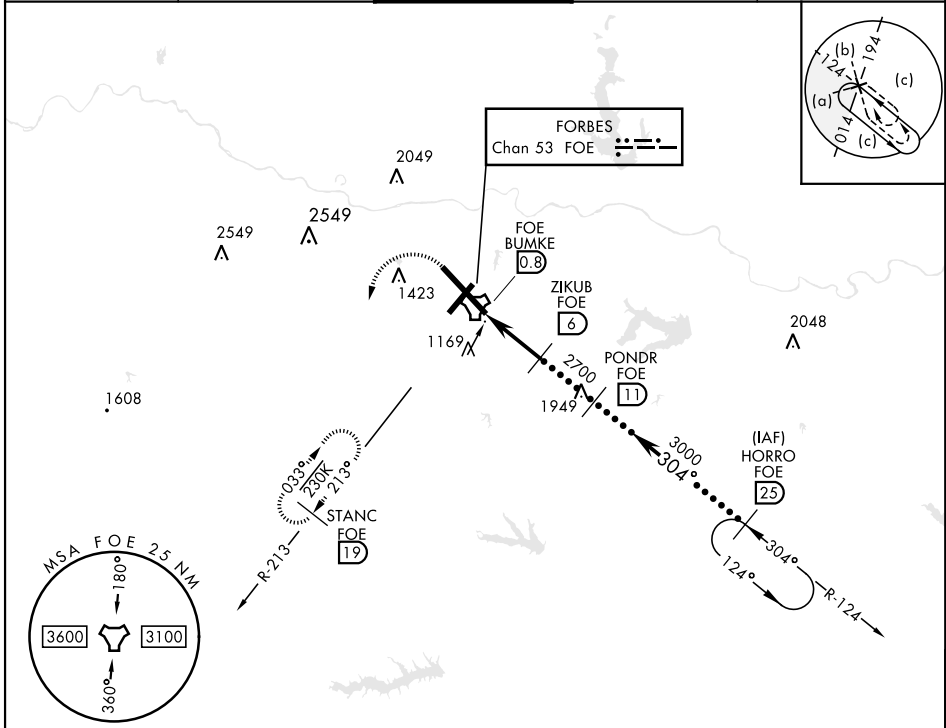
TOPEKA RGNL (KFOE)

M * When ALS inop, increase CAT CDE vis to 1½ miles.

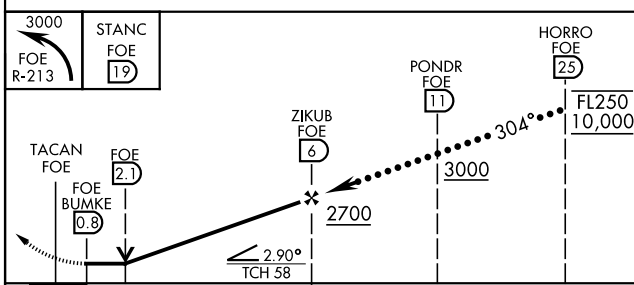
MALS R 

MISSED APPROACH: Climbing left turn to 3000 via heading 190° and FOE TACAN R-213 to STANC/19 DME and hold.

ATIS 128.25	KANSAS CITY CENTER 123.8 343.7	FORBES TOWER * 120.8 (CTAF) 340.2	GND CON 118.425 275.8	UNICOM 122.95
-----------------------	--	---	---------------------------------	-------------------------



EMERG SAFE ALT 100 NM 3600



CATEGORY	C	D	E
S-31 *	1520/50	483 (500-1)	
C CIRCLING	1580-1½ 502 (600-1½)	1700-2 622 (700-2)	1720-2¼ 642 (700-2¼)

ELEV 1078	D TDZE 1037
-----------	--------------------

Runway 31 details:

- Rwy 31 ldg 7001', Rwy 21 ldg 7001'
- TWR 1208
- FL 250
- FL 2500
- 304° heading

MIRL Rwy 3-21
REIL Rwy 3, 13, and 21
HIRL Rwy 13-31

HI-TACAN RWY 31

NC-2, 19 MAR 2026 to 16 APR 2026

NC-2, 19 MAR 2026 to 16 APR 2026