

| | | |
|--|------------------------|--|
| WAAS CH 78399 W31A | APP CRS 312° | Rwy Ldg 12803 TDZE 1037 Apt Elev 1078 |
|--|------------------------|--|

RNAV (GPS) RWY 31

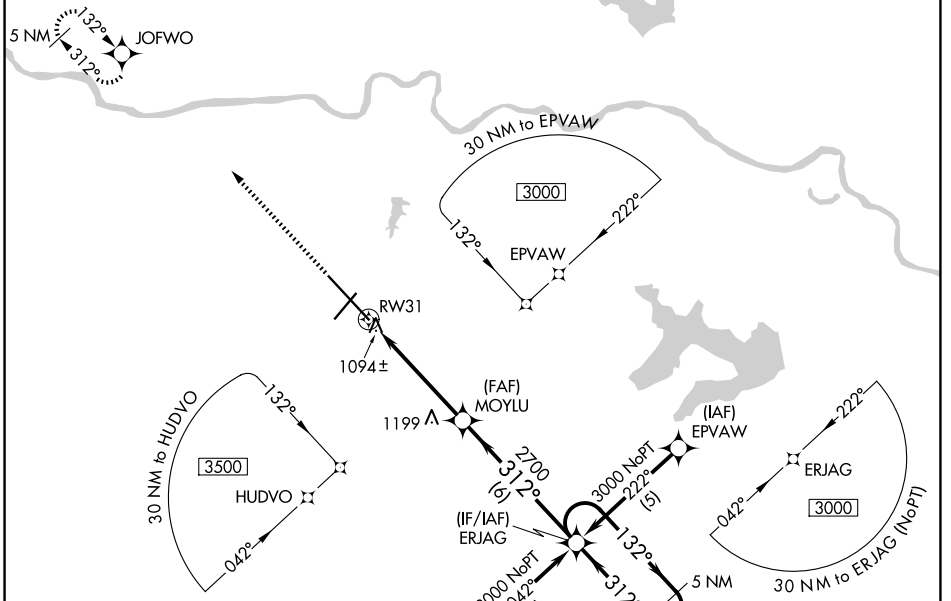
TOPEKA RGNL (F/OE)

⚠ For inoperative MALSR, increase LPV all Cats visibility to RVR 4000, and LNAV/VNAV Cat D to RVR 5000. Baro-VNAV NA when using Philip Billard Muni altimeter setting. If local altimeter setting not received, use Philip Billard Muni altimeter setting and increase all DAs/MDAs 60 feet. Baro-VNAV NA below -17°C (2°F). DME/DME RNP-0.3 NA. VDP NA when using Philip Billard Muni altimeter setting.

MALSR

MISSED APPROACH:
Climb to 3600 direct JOFWO and hold.

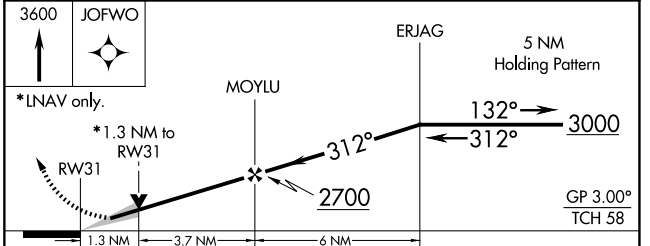
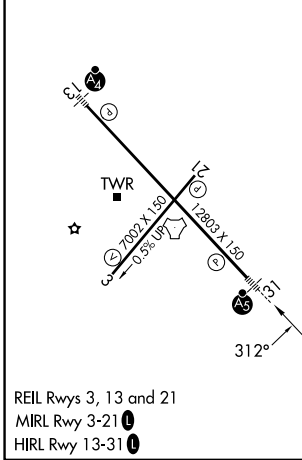
| | | | | |
|-----------------------|--|--|---------------------------------|-------------------------|
| ATIS 128.25 | KANSAS CITY CENTER 123.8 343.7 | FORBES TOWER* 120.8 (CTAF) 0 340.2 | GND CON 118.425 275.8 | UNICOM 122.95 |
|-----------------------|--|--|---------------------------------|-------------------------|



NC-2, 19 MAR 2026 to 16 APR 2026

NC-2, 19 MAR 2026 to 16 APR 2026

| | | |
|-----------|----------|-----------|
| ELEV 1078 | D | TDZE 1037 |
|-----------|----------|-----------|



| CATEGORY | A | B | C | D |
|--------------|---------------------|--------------------|----------------------|---------------------|
| LPV DA | 1298/24 261 (300-½) | | | |
| LNAV/VNAV DA | 1357/24 320 (300-½) | | | 1357/40 320 (300-¾) |
| LNAV MDA | 1500/24 | 463 (500-½) | 1500/40 463 (500-¾) | 1500/50 463 (500-1) |
| CIRCLING | 1520-1 442 (500-1) | 1580-1 502 (600-1) | 1580-1½ 502 (600-1½) | 1700-2 622 (700-2) |