

TACAN FOE Chan <b>53</b> <b>(111.6)</b>	APP CRS <b>138°</b>	Rwy Ldg <b>12803</b> TDZE <b>1066</b> Apt Elev <b>1078</b>
---	------------------------	--

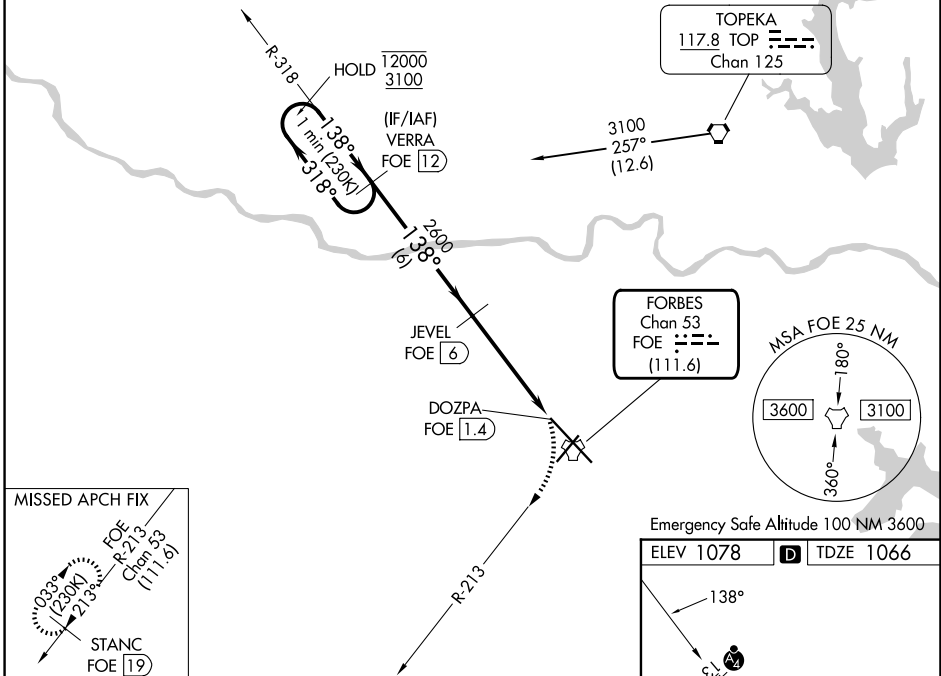
# TACAN RWY 13

TOPEKA RGNL (FOE)

	MALSF	MISSED APPROACH: Climbing right turn to 3000 on FOE TACAN R-213 to STANC/FOE 19 DME and hold.

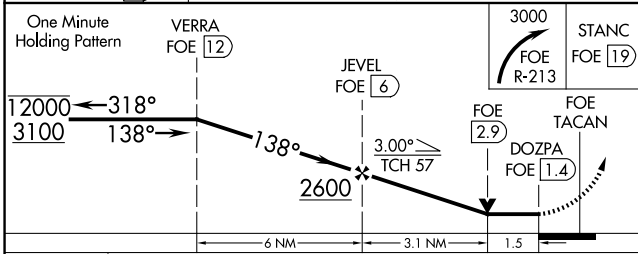
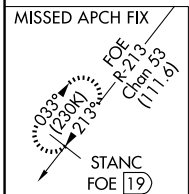
ATIS <b>128.25</b>	KANSAS CITY CENTER <b>123.8 343.7</b>	FORBES TOWER* <b>120.8 (CTAF) 340.2</b>	GND CON <b>118.425 275.8</b>	UNICOM <b>122.95</b>
-----------------------	--	--	---------------------------------	-------------------------

**NOT FOR CIVIL USE**

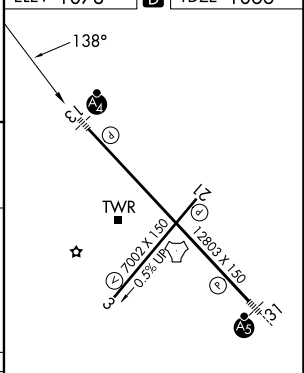


NC-2, 19 MAR 2026 to 16 APR 2026

NC-2, 19 MAR 2026 to 16 APR 2026



Emergency Safe Altitude 100 NM 3600



CATEGORY	A	B	C	D	E
S-13	1600-1	534 (600-1)	1600-1½	534 (600-1½)	
CIRCLING	1600-1	522 (600-1)	1600-1½ 522 (600-1½)	1700-2 622 (700-2)	1720-2¼ 642 (700-2¼)

REIL Rws 3, 13 and 21  
MIRL Rwy 3-21  
HIRL Rwy 13-31