

WAAS CH <b>69614</b> <b>W18B</b>	APP CRS <b>180°</b>	Rwy Ldg <b>5141</b> TDZE <b>668</b> Apt Elev <b>678</b>
--	------------------------	---

# RNAV (GPS) RWY 18R

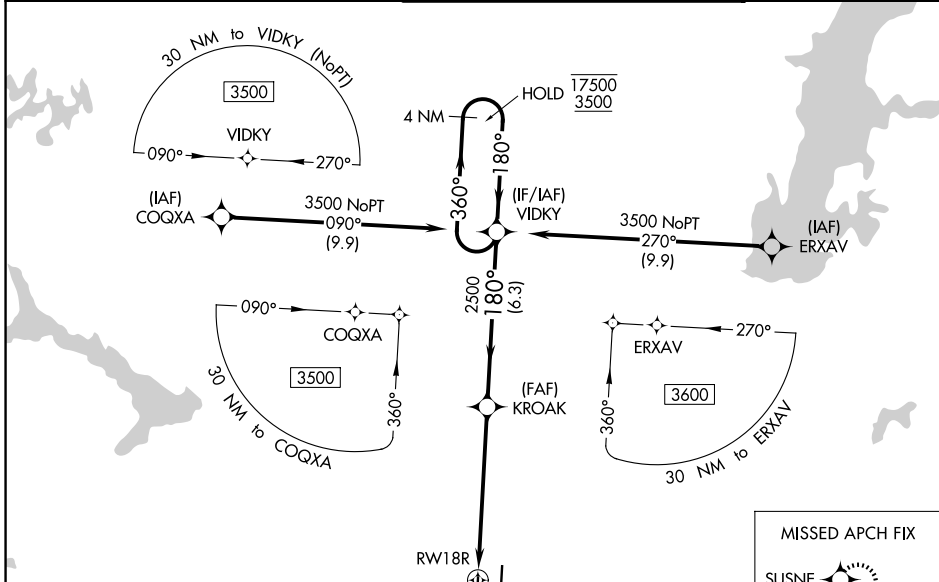
TULSA INTL (TUL)

RNP APCH - GPS.

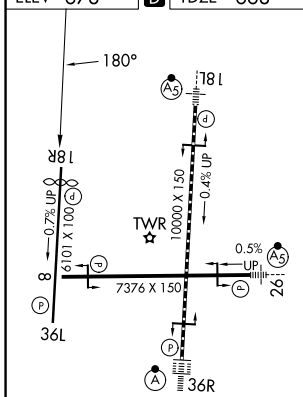
**⚠** Circling NA for Cat E south of Rwy 8-26. Use of FD or AP required during simultaneous operations.  
**⚠** For uncompensated Baro-VNAV systems, LNAV/VNAV NA below -8°C or above 54°C.  
**ASR** Simultaneous approach authorized. LNAV procedure NA during simultaneous operations.

**MISSED APPROACH:**  
 Climb to 3500 direct  
 SUSNE and hold.

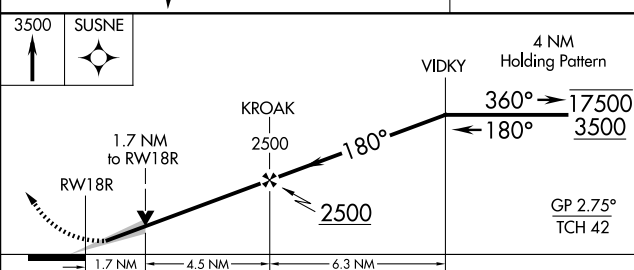
D-ATIS <b>124.9 377.2</b>	TULSA APP CON <b>124.0 338.3</b>	TULSA TOWER <b>121.2 310.8</b> (08/26, 18L/36R) <b>118.7 257.8</b> (18R/36L)	GND CON <b>121.9 348.6</b>
------------------------------	-------------------------------------	--	-------------------------------



ELEV <b>678</b>	<b>D</b>	TDZE <b>668</b>
-----------------	----------	-----------------



TDZ/CL Rwy 36R  
 HIRL Rwy 8-26, 18L-36R and 18R-36L  
 REIL Rwy 8, 18R and 36L



CATEGORY	A	B	C	D	E
LPV DA	868-3/4		200 (200-3/4)		
LNAV/VNAV DA	954-7/8		286 (300-7/8)		
LNAV MDA	1180-1	512 (600-1)	1180-1 3/8	512 (600-1 3/8)	
CIRCLING	1180-1	502 (600-1)	1500-2 1/2	1520-2 3/4	1520-3
			822 (900-2 1/2)	842 (900-2 3/4)	842 (900-3)

SC-1, 19 MAR 2026 to 16 APR 2026

SC-1, 19 MAR 2026 to 16 APR 2026