

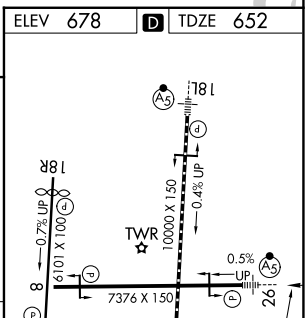
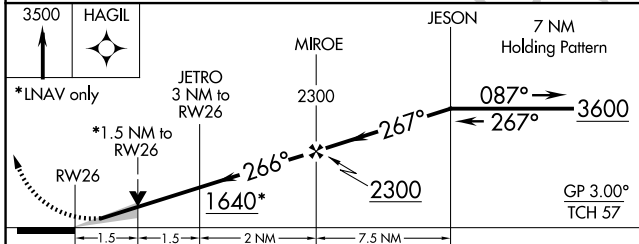
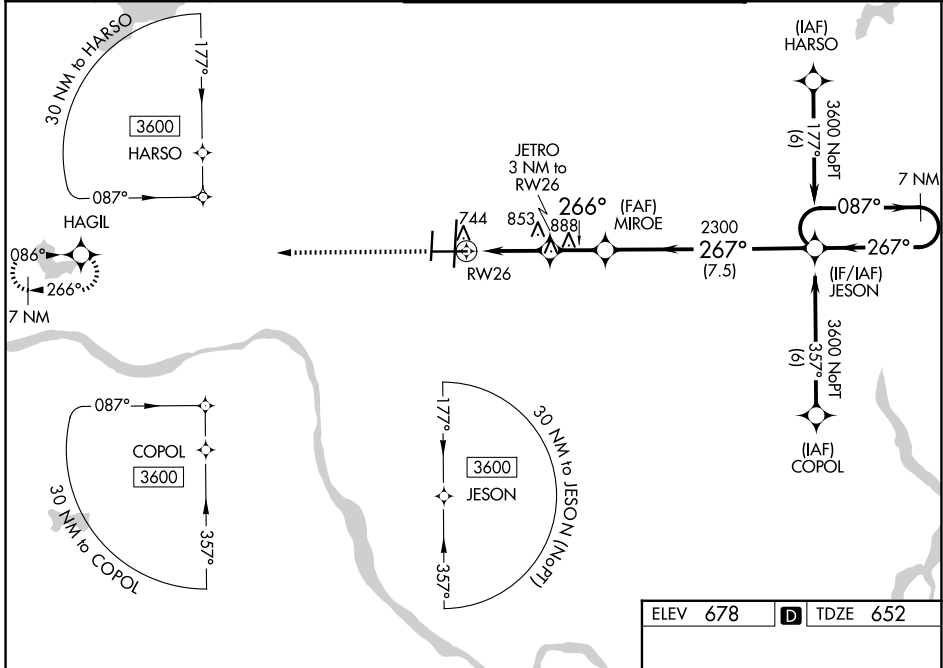
WAAS CH 93814 W26A	APP CRS 266°	Rwy Ldg TDZE Apt Elev	7376 652 678
--	------------------------	-----------------------------	---

RNAV (GPS) RWY 26

TULSA INTL (TUL)

	Inop table does not apply to LPV DA. For uncompensated Baro-VNAV systems, LNAV/VNAV NA below -13°C (9°F) or above 54°C (130°F). For inop MALSR, increase LNAV/VNAV DA Cat E visibility to 1½ mile, LNAV MDA Cats A/B visibility to 1 mile and Cat E to 1½ mile. Circling NA for Cat E south of Rwy 8-26. DME/DME RNP-0.3 NA.		MISSED APPROACH: Climb to 3500 direct HAGIL and hold.

D-ATIS 124.9 377.2	TULSA APP CON 124.0 338.3	TULSA TOWER 121.2 310.8 (08/26, 18L/36R) 118.7 257.8 (18R/36L)	GND CON 121.9 348.6
------------------------------	-------------------------------------	--	-------------------------------



CATEGORY	A	B	C	D	E
LPV DA	852-¾ 200 (200-¾)				
LNAV/VNAV DA	1089-1 437 (500-1)				
LNAV MDA	1160-¾ 508 (500-¾)	1160-1 508 (500-1)			
CIRCLING	1160-1 482 (500-1)	1520-2½ 842 (900-2½)	1520-2¾ 842 (900-2¾)	1520-3 842 (900-3)	

ELEV 678 **D** TDZE 652
 TDZ/CL Rwy 36R
 HIRL Rwy 8-26, 18L-36R and 18R-36L
 REIL Rwy 8, 18R and 36L

SC-1, 19 MAR 2026 to 16 APR 2026

SC-1, 19 MAR 2026 to 16 APR 2026