

WAAS CH 82214 W36A	APP CRS 360°	Rwy Ldg 10000 TDZE 650 Apt Elev 678
----------------------------------------	------------------------	----------------------------------------------------------------

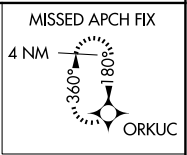
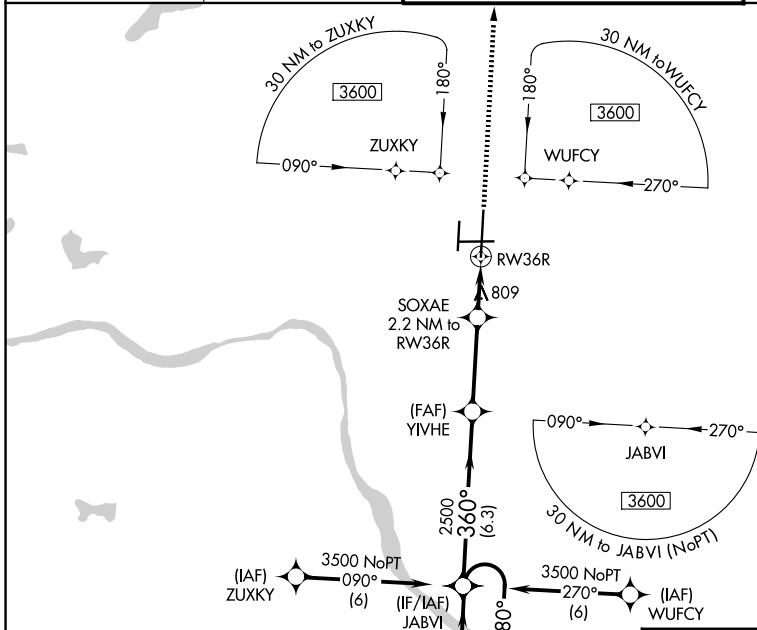
RNAV (GPS) RWY 36R

TULSA INTL (TUL)

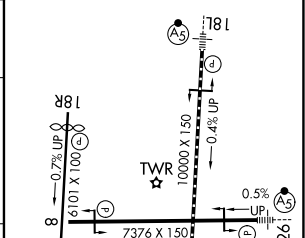
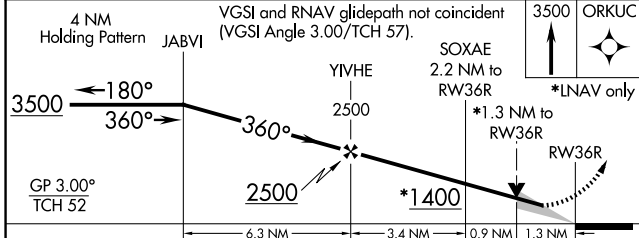
ASR For uncompensated Baro-VNAV systems, LNAV/VNAV NA below -13°C (9°F) or above 54°C (130°F). Circling NA for Cat E south of Rwy 8-26. DME/DME RNP-0.3 NA.
For inop ALSF-2, increase LPV Cat E visibility to RVR 4000, LNAV/VNAV all Cats visibility to 1½ mile, and LNAV Cats C/D/E visibility to 1½ mile.

ALSF-2
MISSED APPROACH:
Climb to 3500 direct ORKUC and hold.

D-ATIS 124.9 377.2	TULSA APP CON 124.0 338.3	TULSA TOWER 121.2 310.8 (08/26, 18L/36R) 118.7 257.8 (18R/36L)	GND CON 121.9 348.6
------------------------------	-------------------------------------	------------------------------------------------------------------------------------	-------------------------------



ELEV 678	D TDZE 650
TDZ/CL Rwy 36R HIRL Rwys 8-26, 18L-36R and 18R-36L REIL Rwys 8, 18R and 36L	



CATEGORY	A	B	C	D	E	
LPV DA	850/18		200 (200-½)			
LNAV/VNAV DA	1145-1¼		495 (500-1¼)			
LNAV MDA	1120/24		470 (500-½)		1120/50	470 (500-1)
CIRCLING	1120-1	1160-1	1520-2½	1520-2¾	1520-3	
	442 (500-1)	482 (500-1)	842 (900-2½)	842 (900-2¾)	842 (900-3)	

SC-1, 19 MAR 2026 to 16 APR 2026

SC-1, 19 MAR 2026 to 16 APR 2026