

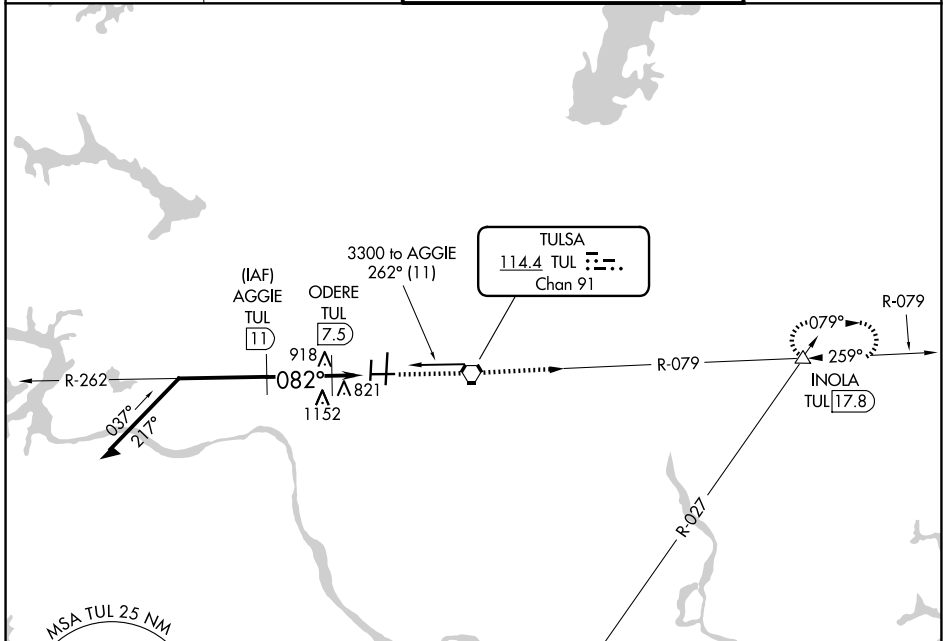
VORTAC TUL 114.4 Chan 91	APP CRS 082°	Rwy Ldg 7376 TDZE 671 Apt Elev 678
---------------------------------------	------------------------	---

VOR/DME RWY 8 TULSA INTL (TUL)

ASR Circling NA for Cat E south of Rwy 8-26. Helicopter visibility reduction below 3/4 SM NA. Autopilot coupled approach NA.

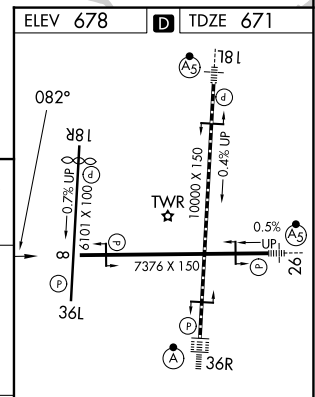
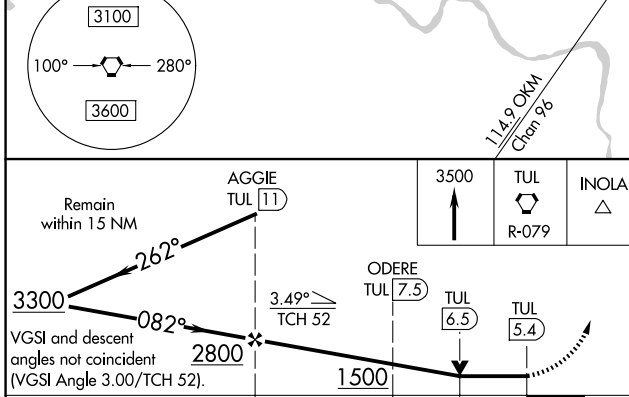
MISSED APPROACH: Climb to 3500 direct TUL VORTAC then via TUL R-079 to INOLA INT/TUL 17.8 DME and hold.

D-ATIS 124.9 377.2	TULSA APP CON 124.0 338.3	TULSA TOWER 121.2 310.8 (08/26, 18L/36R) 118.7 257.8 (18R/36L)	GND CON 121.9 348.6
------------------------------	-------------------------------------	--	-------------------------------



SC-1, 19 MAR 2026 to 16 APR 2026

SC-1, 19 MAR 2026 to 16 APR 2026



CATEGORY	A	B	C	D	E	
S-8	1080-1	409 (500-1)	1080-1 1/4	409 (500-1 1/4)	1080-1 1/2	409 (500-1 1/2)
CIRCLING	1120-1 442 (500-1)	1160-1 482 (500-1)	1520-2 1/2 842 (900-2 1/2)	1520-2 3/4 842 (900-2 3/4)	1520-3 842 (900-3)	

TDZ/CL Rwy 36R
HIRL Rwy 8-26, 18L-36R and 18R-36L
REIL Rwy 8, 18R and 36L