

VORTAC TUL 114.4 Chan 91	APP CRS 262°	Rwy Ldg TDZE Apt Elev	7376 652 678
---------------------------------------	------------------------	-----------------------------	---

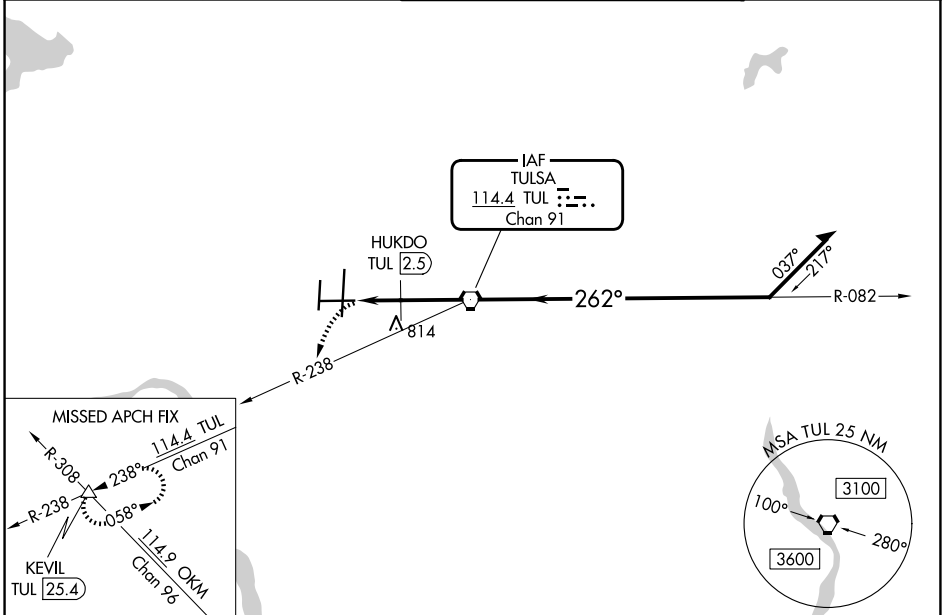
VOR Y or TACAN Y RWY 26

TULSA INTL (TUL)

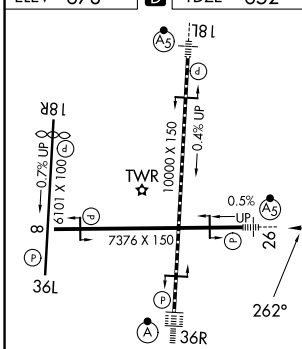
ASR Circling NA for Cat E south of Rwy 8-26. VOR Minimums: For inop ALS, increase Cat A/B visibility to 1 SM and Cat E to 1½ SM.
HUKDO Minimums: For inop ALS, increase Cat A/B visibility to 1 SM and Cat E to 1½ SM.

MALS MISSED APPROACH: Climbing left turn to 2600 on heading 220° and on TUL VORTAC R-238 to KEVIL INT/TUL 25.4 DME and hold.

D-ATIS 124.9 377.2	TULSA APP CON 124.0 338.3	TULSA TOWER 121.2 310.8 (08/26, 18L/36R) 118.7 257.8 (18R/36L)	GND CON 121.9 348.6
------------------------------	-------------------------------------	--	-------------------------------



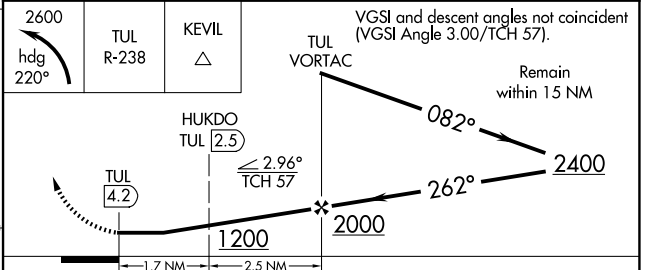
ELEV 678	D	TDZE 652
----------	----------	----------



TDZ/CL Rwy 36R
HIRL Rws 8-26, 18L-36R and 18R-36L
REIL Rws 8, 18R and 36L

FAF to MAP 4.2 NM

Knots	60	90	120	150	180
Min:Sec	4:12	2:48	2:06	1:41	1:24



CATEGORY	A	B	C	D	E
S-26	1200-¾	548 (600-¾)	1200-1¼ 548 (600-1¼)		
CIRCLING	1200-1	522 (600-1)	1520-2½ 842 (900-2½)	1520-2¾ 842 (900-2¾)	1520-3 842 (900-3)
HUKDO FIX MINIMUMS					
S-26	1080-¾ 428 (500-¾)				
CIRCLING	1120-1 442 (500-1)	1160-1 482 (500-1)	1520-2½ 842 (900-2½)	1520-2¾ 842 (900-2¾)	1520-3 842 (900-3)

VOR Y or TACAN Y RWY 26

SC-1, 19 MAR 2026 to 16 APR 2026

SC-1, 19 MAR 2026 to 16 APR 2026