

RNAV 1 - DME/DME/IRU or GPS.

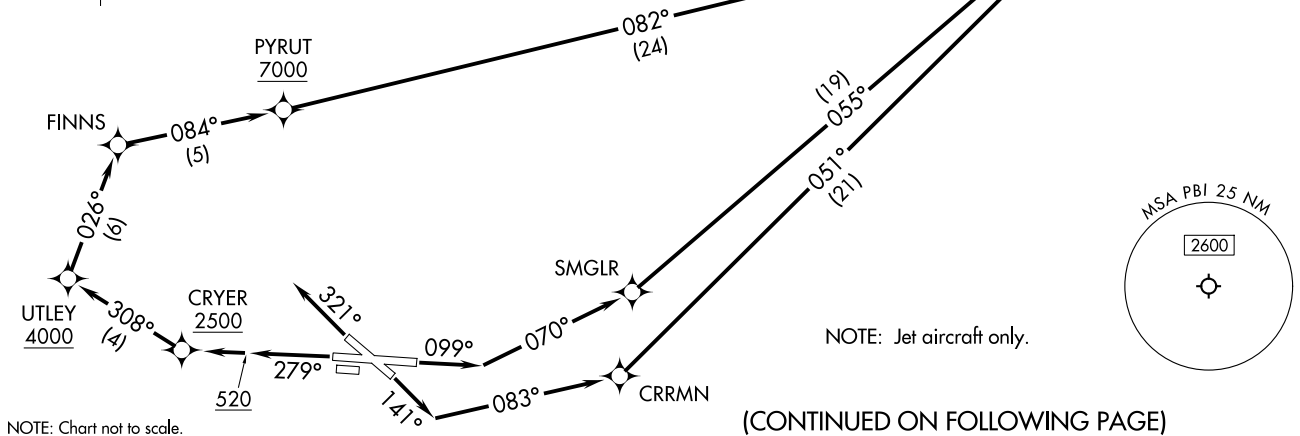
RADAR required.

**TOP ALTITUDE:**  
**RWYS 10L/14/28R: 12000**  
**RWY 32: ASSIGNED BY ATC**

PALM BEACH DEP CON  
128.3 317.4  
D-ATIS  
123.75  
CLNC DEL  
121.6 284.6  
CPDLC  
GND CON  
121.9 284.6  
PALM BEACH TOWER  
119.1 257.8

TAKEOFF MINIMUMS

Rwys 10L, 14, 28R, 32: Standard with minimum climb of 500'/NM to 520.



NOTE: Chart not to scale.

(CONTINUED ON FOLLOWING PAGE)

SLIDZ THREE DEPARTURE (RNAV)  
(SLIDZ3.SLIDZ) 22JAN26

WEST PALM BEACH, FLORIDA  
PALM BEACH INTL (PBI)

(SLIDZ3.SLIDZ) 26022  
SLIDZ THREE DEPARTURE (RNAV)

PALM BEACH INTL (PBI)  
WEST PALM BEACH, FLORIDA

AL-449 (FAA)

# SLIDZ THREE DEPARTURE (RNAV)



## DEPARTURE ROUTE DESCRIPTION

TAKEOFF RUNWAY 10L: Climb on heading 099° to intercept course 070° to SMGLR, then on track 055° to cross SLIDZ at or above 10000, thence. . .

TAKEOFF RUNWAY 14: Climb on heading 141° to intercept course 083° to CRRMN, then on track 051° to cross SLIDZ at or above 10000, thence. . .

TAKEOFF RUNWAY 28R: Climb on heading 279° to 520, then direct CRYER, cross CRYER at or above 2500, then on track 308° to cross UTLEY at or above 4000, then on track 026° to FINNS, then on track 084° to cross PYRUT at or above 7000, then on track 082° to cross SLIDZ at or above 10000, thence. . .

TAKEOFF RUNWAY 32: Climb on heading 321°, for vectors to cross SLIDZ at or above 10000, thence. . .

. . . on track 049° to cross FIXAS at or above 12000, then on transition, maintain ATC assigned altitude. Expect filed altitude ten minutes after departure.

ALL AIRCRAFT: Climb gradients: If unable to accept climb rate advise ATC prior to departure. Runways 10L, 14, 28R, 32: 500'/NM to 520.

### LENDZ TRANSITION (SLIDZ3.LENDZ)

SE-3, 19 MAR 2026 to 16 APR 2026

SE-3, 19 MAR 2026 to 16 APR 2026