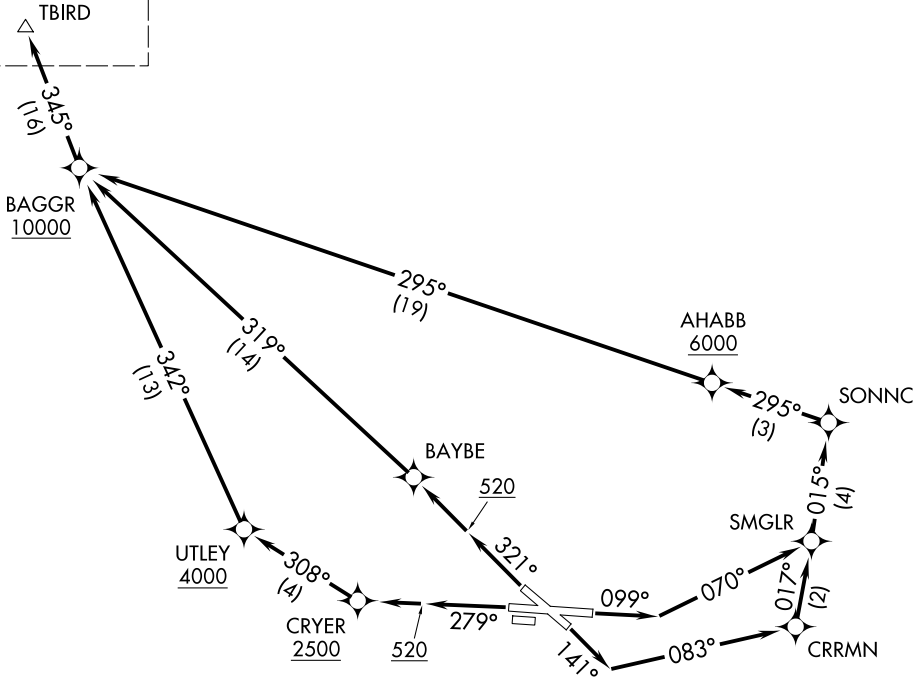


# TBIRD SEVEN DEPARTURE (RNAV) Departure Routes

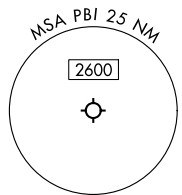
PALM BEACH DEP CON 128.3 317.4 D-ATIS 123.75 CLNC DEL 121.6 284.6 CPDLC GND CON 121.9 284.6 PALM BEACH TOWER 119.1 257.8	RNAV 1 - DME/DME/IRU or GPS.	<b>TOP ALTITUDE: 11000</b>
	RADAR required.	

NOTE: Jet aircraft only.  
 NOTE: CHEFS Transition for use by MCO or DAB area arrivals.  
 NOTE: MATLK Transition for use by aircraft filed to Jacksonville area airports only, or as assigned by ATC.

See following page for transition routes.



**TAKEOFF MINIMUMS**  
 Rwy 10L, 14, 28R, 32: Standard with minimum climb of 500'/NM to 520.



NOTE: Chart not to scale.

(CONTINUED ON FOLLOWING PAGE)

SE-3, 19 MAR 2026 to 16 APR 2026

SE-3, 19 MAR 2026 to 16 APR 2026

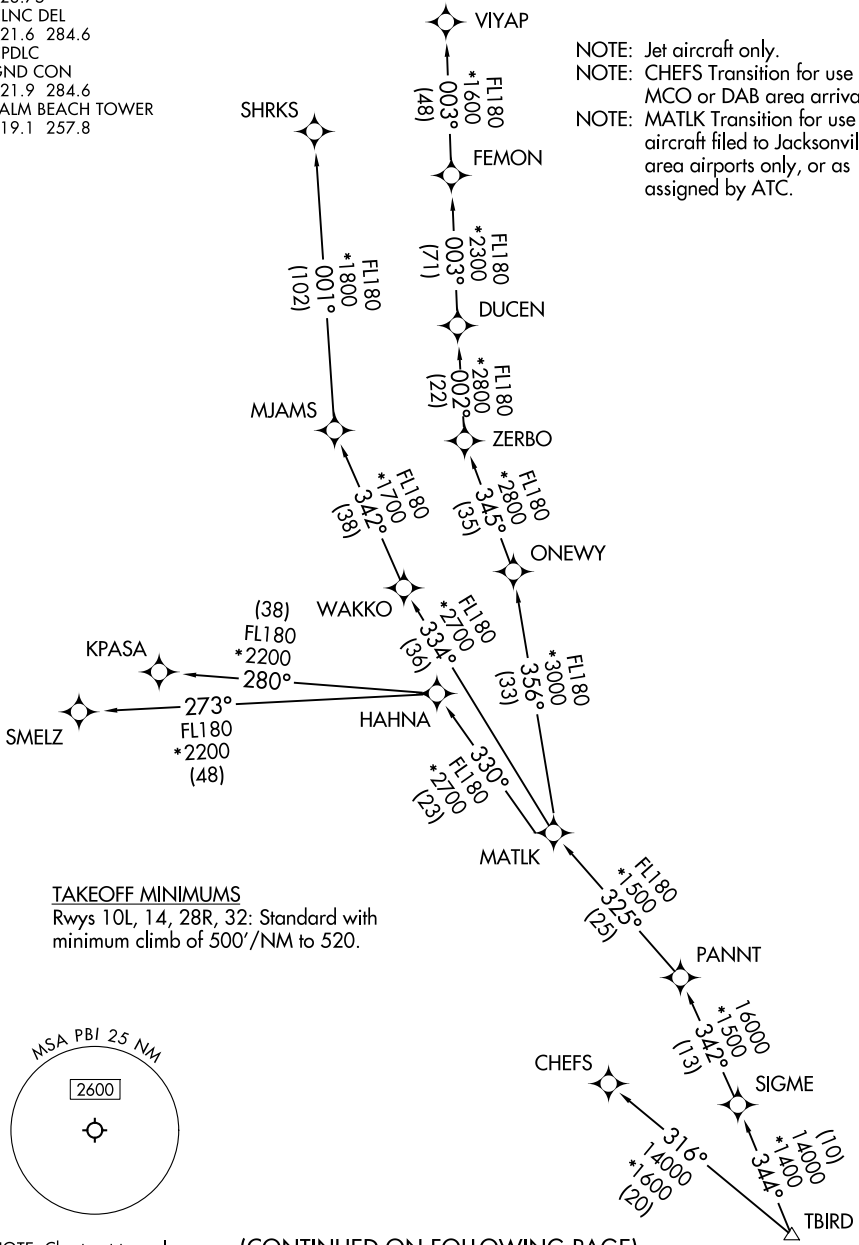
# TBIRD SEVEN DEPARTURE (RNAV) Transition Routes

PALM BEACH DEP CON  
128.3 317.4  
D-ATIS  
123.75  
CLNC DEL  
121.6 284.6  
CPDLC  
GND CON  
121.9 284.6  
PALM BEACH TOWER  
119.1 257.8

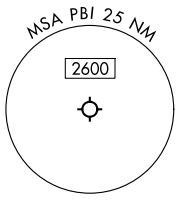
RNAV 1 - DME/DME/IRU or GPS.  
RADAR required.

**TOP ALTITUDE:  
11000**

NOTE: Jet aircraft only.  
NOTE: CHEFS Transition for use by MCO or DAB area arrivals.  
NOTE: MATLK Transition for use by aircraft filed to Jacksonville area airports only, or as assigned by ATC.



**TAKEOFF MINIMUMS**  
Rwys 10L, 14, 28R, 32: Standard with minimum climb of 500'/NM to 520.



NOTE: Chart not to scale.

(CONTINUED ON FOLLOWING PAGE)

SE-3, 19 MAR 2026 to 16 APR 2026

SE-3, 19 MAR 2026 to 16 APR 2026

# TBIRD SEVEN DEPARTURE (RNAV)



## DEPARTURE ROUTE DESCRIPTION

TAKEOFF RUNWAY 10L: Climb on heading 099° to intercept course 070° to SMGLR, then on track 015° to SONNC, then on track 295° to cross AHABB at or above 6000, then on track 295° to cross BAGGR at or above 10000, thence. . .

TAKEOFF RUNWAY 14: Climb on heading 141° to intercept course 083° to CRRMN, then on track 017° to SMGLR, then on track 015° to SONNC, then on track 295° to cross AHABB at or above 6000, then on track 295° to cross BAGGR at or above 10000, thence. . .

TAKEOFF RUNWAY 28R: Climb on heading 279° to 520, then direct CRYER, cross CRYER at or above 2500, then on track 308° to cross UTLEY at or above 4000, then on track 342° to cross BAGGR at or above 10000, thence. . .

TAKEOFF RUNWAY 32: Climb on heading 321° to 520, then direct BAYBE, then on track 319° to cross BAGGR at or above 10000, thence. . .

. . .on track 345° to TBIRD, then on assigned transition, maintain 11000. Expect filed altitude 10 minutes after departure.

ALL AIRCRAFT: Climb gradients: If unable to accept climb rate advise ATC prior to departure. Runways 10L, 14, 28R, 32: 500'/NM to 520.

- CHEFS TRANSITION (TBIRD7.CHEFS)
- KPASA TRANSITION (TBIRD7.KPASA)
- MATLK TRANSITION (TBIRD7.MATLK)
- SHRKS TRANSITION (TBIRD7.SHRKS)
- SME LZ TRANSITION (TBIRD7.SMELZ)
- VIYAP TRANSITION (TBIRD7.VIYAP)

SE-3, 19 MAR 2026 to 16 APR 2026

SE-3, 19 MAR 2026 to 16 APR 2026