

HI-ILS or LOC Z RWY 33L

LOC I-SPS 109.7	APCH CRS 333°	Rwy ldg TDZE Arprt Elev 13,100 1000 1019
---------------------------	-------------------------	--

[USAF]

SHEPPARD AFB/WICHITA FALLS MUNI (KSPS)

DME required

- When ALS inop, increase CAT CDE vis to 3/4 mile.
- When ALS inop, increase CAT CDE vis to 1 mile.
- Circling not authorized W of Rwy 15R-33L.

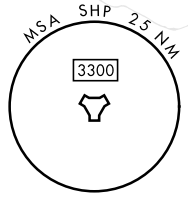
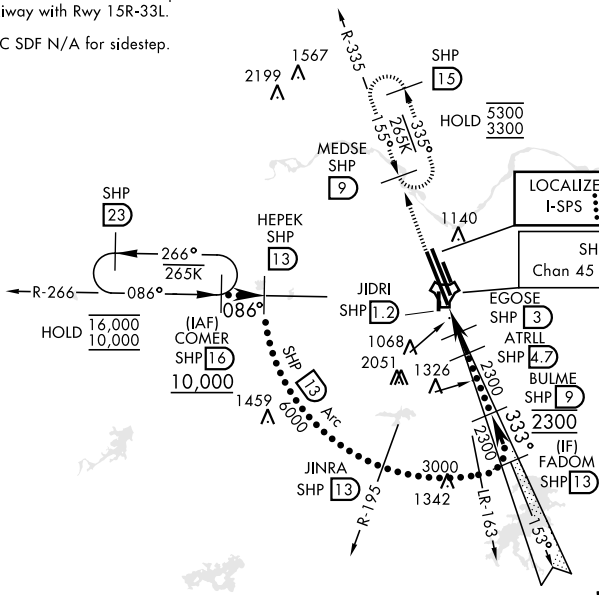
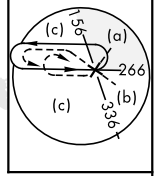


MISSED APPROACH: Climb to 3300 on SHP TACAN R-335 to MEDSE/9 DME and hold, continue climb-in-hold to 3300.

ATIS ★ 132.05 269.9	APP CON 118.2 269.025	TOWER ★ 119.75 0 279.525 (CTAF)	GND CON 125.5 289.4	ASR
-------------------------------	---------------------------------	---	-------------------------------	-----

CAUTION: Do not confuse parallel taxiway with Rwy 15R-33L.

LOC SDF N/A for sidestep.

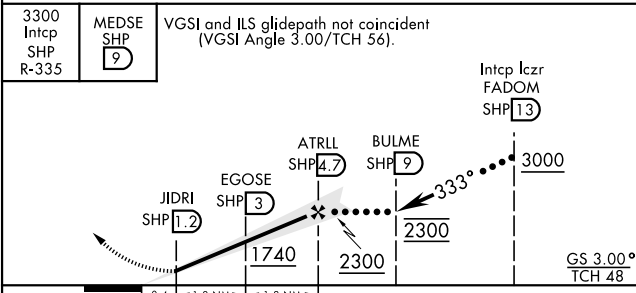


SC-2, 19 MAR 2026 to 16 APR 2026

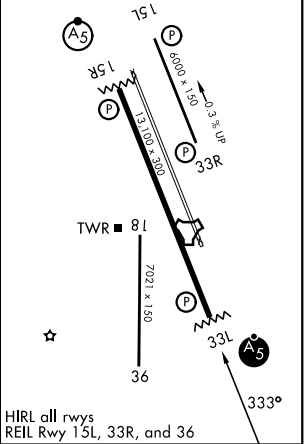
SC-2, 19 MAR 2026 to 16 APR 2026

ELEV	1019	TDZE	1000
------	------	------	------

EMERG SAFE ALT 100 NM 4600



CATEGORY	C	D	E
S-ILS 33L *	1200-1/2	200 (200-1/2)	
S-LOC 33L **	1340-1/2	340 (400-1/2)	
CIRCLING ***	1480-1 1/2 461 (500-1 1/2)	2100-3	1081 (1100-3)



HI-ILS or LOC Z RWY 33L