

RNAV (GPS) RWY 15R

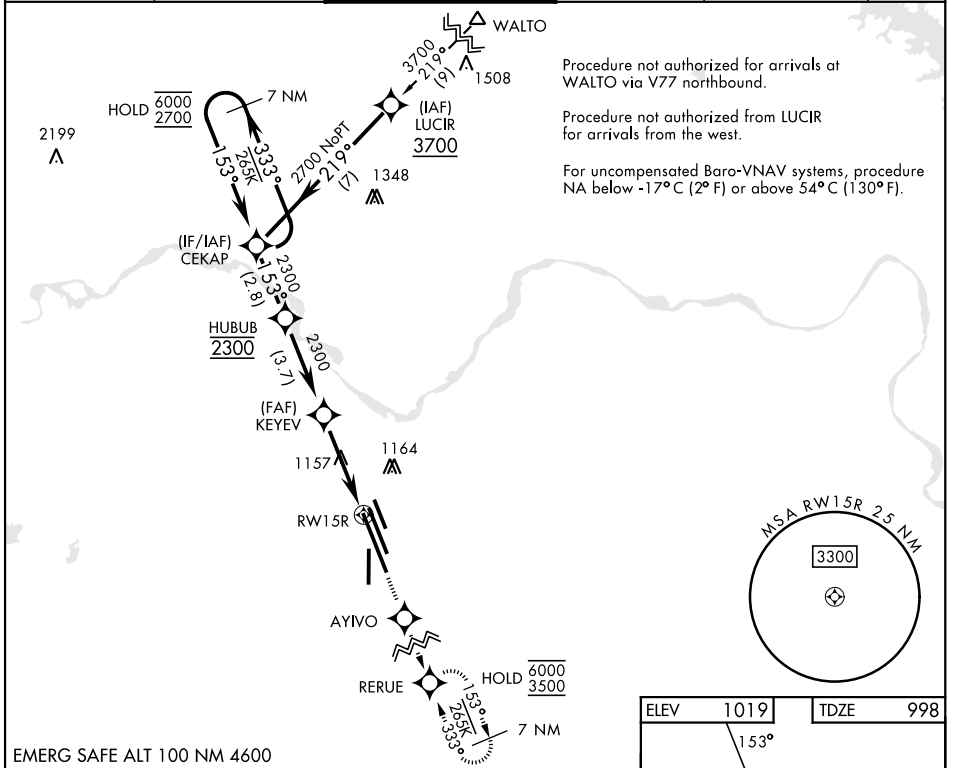
APCH CRS	Rwy ldg	13.100
153°	TDZE	998
	Arpt Elev	1019

[USAF]

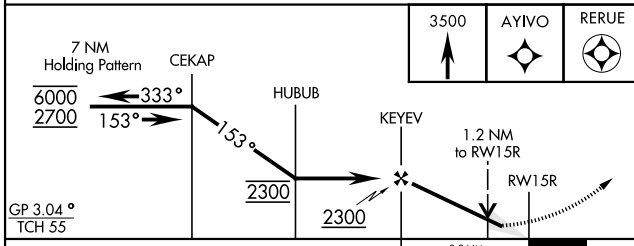
SHEPPARD AFB/WICHITA FALLS MUNI (KSPS)

RNP APCH - GPS		MALSRL	MISSED APPROACH: Climb to 3500 direct AYIVO and via 153° track to RERUE and hold.
<p>▼ * When ALS inop, increase CAT AB vis to ¾ mile; CAT CDE vis to ⅞ mile. ** When ALS inop, increase CAT AB vis to 1 mile; CAT CDE vis to 1¼ miles. *** Circling not authorized West of Rwy 15R-33L.</p>			

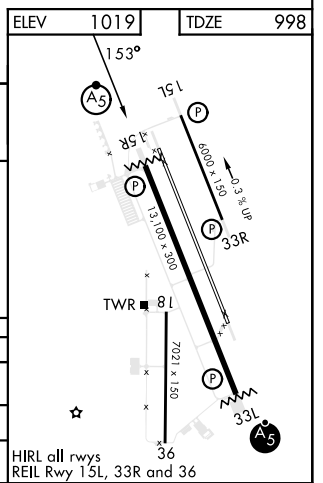
ATIS *	APP CON	TOWER *	GND CON	CLNC DEL	ASR
132.05 269.9	118.2 269.025	119.75 0 279.525 (CTAF)	125.5 289.4	121.2 282.225	



EMERG SAFE ALT 100 NM 4600



CATEGORY	A	B	C	D	E
LNAV/VNAV DA*	1249-½ 251 (300-½)	1252-½ 254 (300-½)	1260-½ 262 (300-½)	1271-½	273 (300-½)
LNAV MDA**	1420-½	422 (500-½)	1420-¾	422	(500-¾)
CIRCLING ***	1420-1 401 (500-1)	1480-1 461 (500-1)	1480-1½ 461 (500-1½)	2100-3	1081 (1100-3)



RNAV (GPS) RWY 15R

SC-2, 19 MAR 2026 to 16 APR 2026

SC-2, 19 MAR 2026 to 16 APR 2026