

WICHITA FALLS, TEXAS

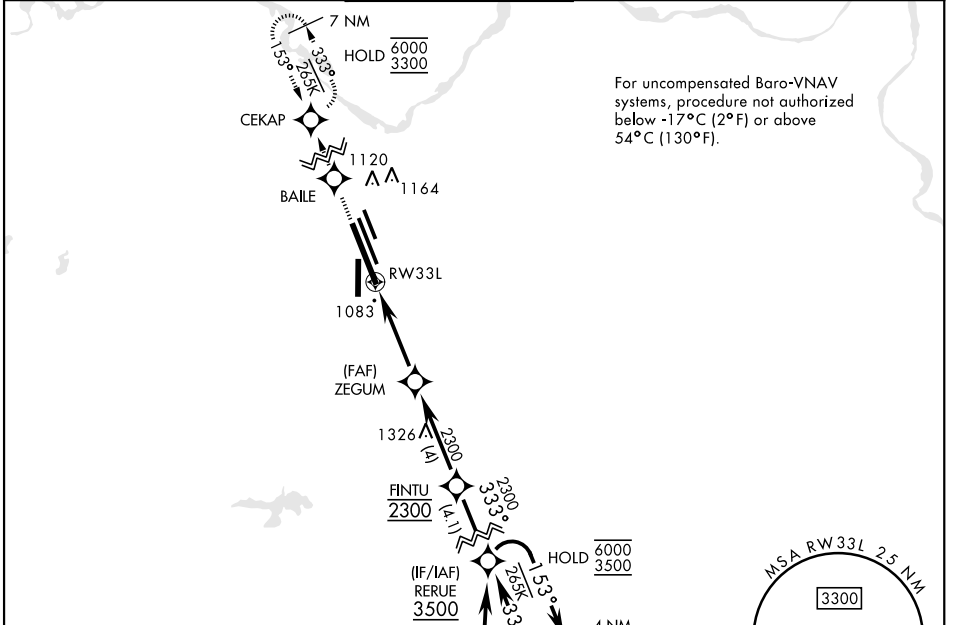
RNAV (GPS) RWY 33L

APCH CRS	Rwy ldg	13.100
333°	TDZE	1000
	Arprt Elev	1019

[USAF]

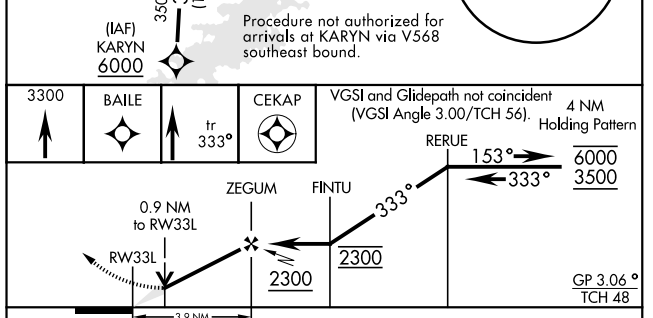
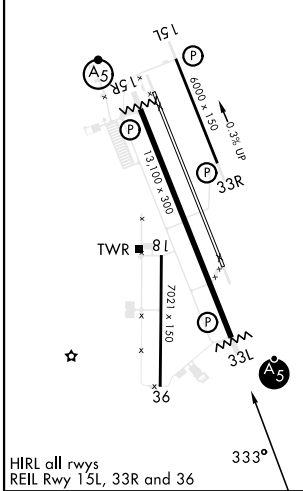
SHEPPARD AFB/WICHITA FALLS MUNI (KSPS)

RNP APCH - GPS		MAJSR 		MISSED APPROACH: Climb to 3300 direct BAILE, track 333° to CEKAP and hold.									
▼ * When ALS inop, increase vis to ¾ mile. ** When ALS inop, increase vis to 1 mile. *** Circling not authorized SW of Rwy 15R-33L.		ATIS ★ 132.05 269.9		APP CON 118.2 269.025		TOWER★ 119.750 279.525 (CTAF)		GND CON 125.5 289.4		CLNC DEL 121.2 282.225		ASR	



EMERG SAFE ALT 100 NM 4600

ELEV	1019	TDZE	1000
------	------	------	------



CATEGORY	A	B	C	D	E
LNNAV/VNAV DA *	1255-½		255	(300-½)	
LNNAV MDA **	1340-½		340	(400-½)	
CIRCLING ***	1440-1	1480-1	1480-1½	2100-3 1081 (1100-3)	
	421 (500-1)	461 (500-1)	461 (500-1½)		

WICHITA FALLS, TEXAS

33°59'N-98°30'W

SHEPPARD AFB/WICHITA FALLS MUNI (KSPS)

Amdt 6 20FEB25

RNAV (GPS) RWY 33L

SC-2, 19 MAR 2026 to 16 APR 2026

SC-2, 19 MAR 2026 to 16 APR 2026