

VOR/DME-E

VORTAC SPS 112.7 Chan 74	APCH CRS 260°	Rwy Idg TDZE Arprt Elev N/A N/A 1019
--	-------------------------	---

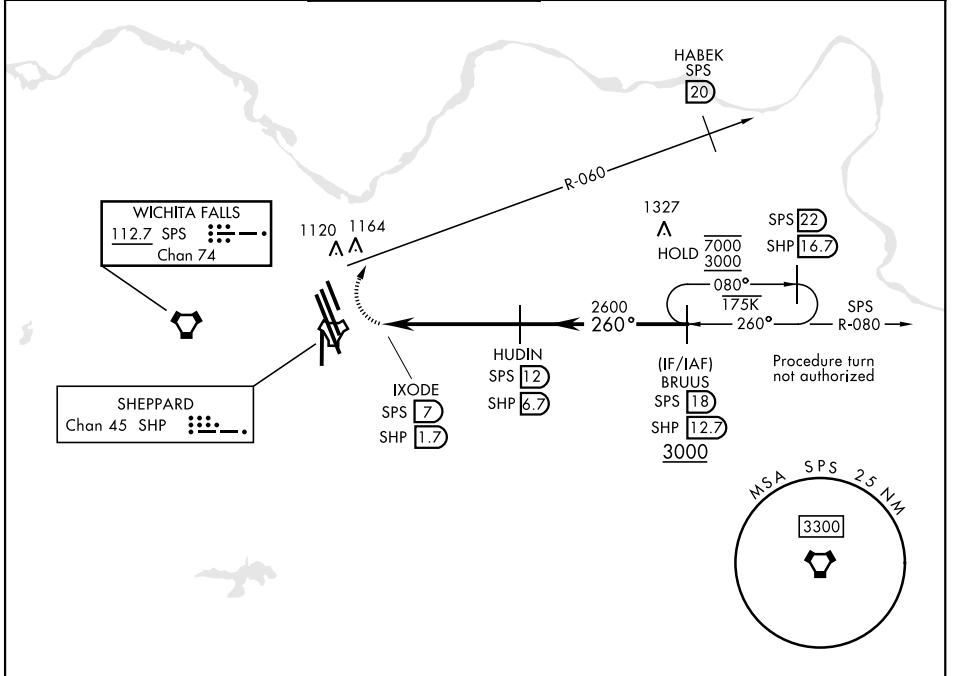
[USAF]

SHEPPARD AFB/WICHITA FALLS MUNI (KSPS)

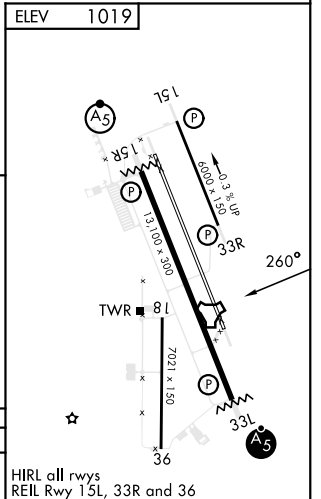
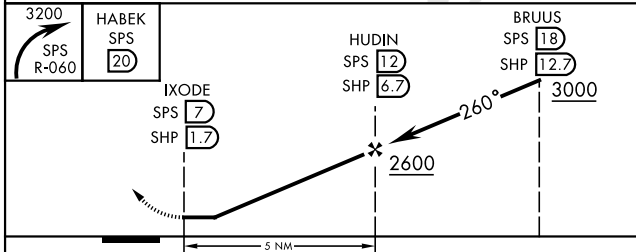
RADAR required
 ▼ * Circling not authorized W of Rwy 15R-33L.

MISSED APPROACH: Climbing right turn to 3200, intcp SPS VORTAC R-060 to 20 DME (HABEK). Expect RADAR vectors.

ATIS ★ 132.05 269.9	APP CON 118.2 269.025	TOWER ★ 119.75 0 279.525 (CTAF)	GND CON 125.5 289.4	CLNC DEL 121.2 282.225	ASR
-------------------------------	---------------------------------	---	-------------------------------	----------------------------------	-----



EMERG SAFE ALT 100 NM 4600



CATEGORY	A	B	C	D	E
CIRCLING*	1480-17 $\frac{1}{8}$	461	(500-17 $\frac{1}{8}$)	2100-3 1081	(1100-3)

HIRL all rwys
 REIL Rwy 15L, 33R and 36

VOR/DME-E

SC-2, 19 MAR 2026 to 16 APR 2026

SC-2, 19 MAR 2026 to 16 APR 2026