

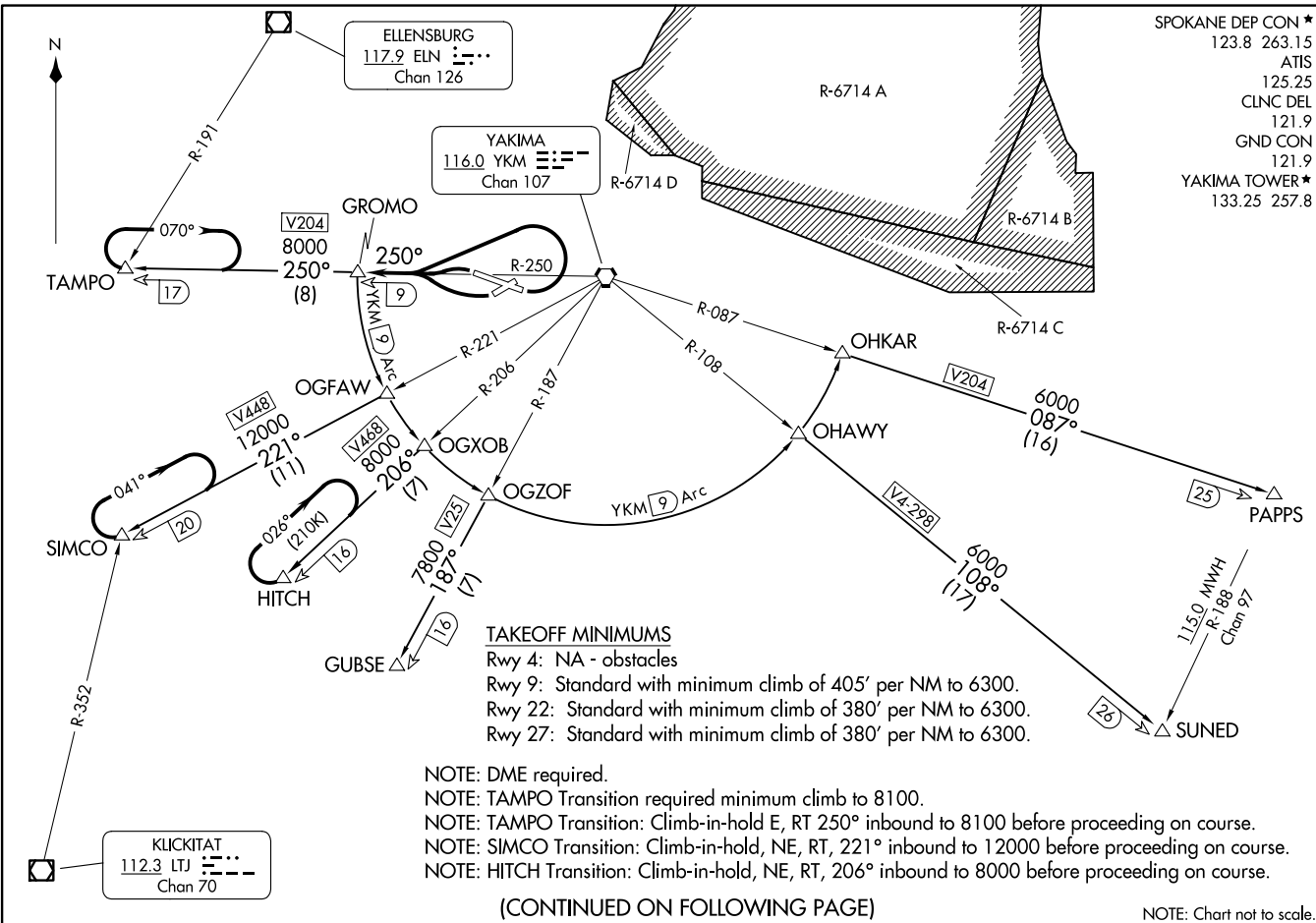
GROMO FOUR DEPARTURE
(GROMO4.GROMO) 10NOV16

(GROMO4.GROMO) 23334
GROMO FOUR DEPARTURE

SPOKANE DEP CON ★
123.8 263.15
ATIS
125.25
CLNC DEL
121.9
GND CON
121.9
YAKIMA TOWER ★
133.25 257.8

AI-465 (FAA)

YAKIMA AIR TRML/MCALLISTER FLD (YKM)
YAKIMA, WASHINGTON



TAKEOFF MINIMUMS
Rwy 4: NA - obstacles
Rwy 9: Standard with minimum climb of 405' per NM to 6300.
Rwy 22: Standard with minimum climb of 380' per NM to 6300.
Rwy 27: Standard with minimum climb of 380' per NM to 6300.

NOTE: DME required.
NOTE: TAMPO Transition required minimum climb to 8100.
NOTE: TAMPO Transition: Climb-in-hold E, RT 250° inbound to 8100 before proceeding on course.
NOTE: SIMCO Transition: Climb-in-hold, NE, RT, 221° inbound to 12000 before proceeding on course.
NOTE: HITCH Transition: Climb-in-hold, NE, RT, 206° inbound to 8000 before proceeding on course.

(CONTINUED ON FOLLOWING PAGE)

NOTE: Chart not to scale.

YAKIMA, WASHINGTON
YAKIMA AIR TRML/MCALLISTER FLD (YKM)

CLICKITAT
112.3 LTJ
Chan 70

ELLENSBURG
117.9 ELN
Chan 126

YAKIMA
116.0 YKM
Chan 107

GROMO
V204
8000
250°
(8)

OGFAW
V448
12000
221°
(11)

HITCH
V210K
026°
(16)

GUBSE
16

OGXOB
V488
8000
206°
(7)

OGZOF
V25
7800
187°
(7)

OHKAR
V204
6000
087°
(16)

OHAWY
V4-298
6000
108°
(17)

SUNED
R-186
115.0 M/MH
Chan 97



DEPARTURE ROUTE DESCRIPTION

TAKEOFF RUNWAYS 9, 27: Climbing left turn thence. . . .

TAKEOFF RUNWAY 22: Climbing right turn thence. . . .

. . . . intercept and proceed on YKM R-250 to GROMO/YKM 9 DME, then on assigned transition.

GUBSE TRANSITION (GROMO4.GUBSE): From over GROMO DME Fix on YKM 9 DME Arc to OGZOF DME fix and YKM VORTAC R-187 to GUBSE DME fix.

HITCH TRANSITION (GROMO4.HITCH): From over GROMO DME Fix on YKM 9 DME Arc to OGXOB DME fix and YKM VORTAC R-206 to HITCH DME fix.

PAPPS TRANSITION (GROMO4.PAPPS): From over GROMO DME Fix on YKM 9 DME Arc to OHKAR DME fix and YKM VORTAC R-087 to PAPPS DME fix.

SIMCO TRANSITION (GROMO4.SIMCO): From over GROMO DME Fix on YKM 9 DME Arc to OGFAW DME fix and YKM VORTAC R-221 to SIMCO INT.

SUNED TRANSITION (GROMO4.SUNED): From over GROMO DME Fix on YKM 9 DME Arc to OHAWY DME fix and YKM R-108 to SUNED INT.

TAMPO TRANSITION (GROMO4.TAMPO): From over GROMO DME Fix on YKM VORTAC R-250 to TAMPO INT.

NW-1, 19 MAR 2026 to 16 APR 2026

NW-1, 19 MAR 2026 to 16 APR 2026