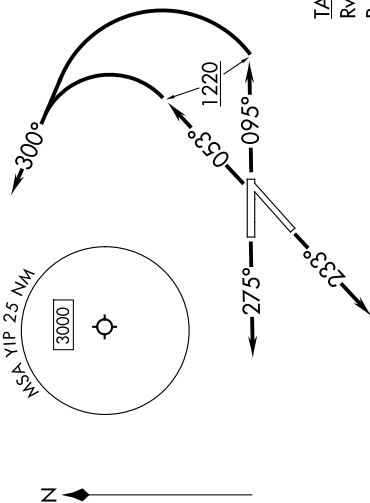


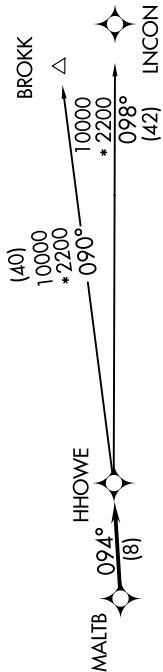
**TOP ALTITUDE:
ASSIGNED BY ATC**



RNAV-1 DME/DME/IRU or GPS.
RADAR required.

DETROIT DEP CON
118.95 284.0
ATIS
127.425
GND CON
119.975
WILLOW RUN TOWER
125.275 256.9

NOTE: Turbojet departures at/above 10000, maintain 280K until advised by ATC.
NOTE: BROKK TRANSITION: For use by flights filed at or below FL270, or as assigned by ATC.



TAKEOFF MINIMUMS:

- Rwys 5, 9: Standard with minimum climb of 500' per NM to 1220.
- Rwy 23: Standard.
- Rwy 27: Standard with minimum climb of 209' per NM to 1000.

NOTE: Chart not to scale.

DEPARTURE ROUTE DESCRIPTION

- TAKEOFF RUNWAY 5:** Climb on heading 053° to 1220, then on heading 300° or as assigned by ATC, for RADAR vectors to cross MALTB at or above 2200, thence....
- TAKEOFF RUNWAY 9:** Climb on heading 095° to 1220, then on heading 300° or as assigned by ATC, for RADAR vectors to cross MALTB at or above 2200, thence....
- TAKEOFF RUNWAY 23:** Climb on heading 233° or as assigned by ATC, for RADAR vectors to cross MALTB at or above 2200, thence....
- TAKEOFF RUNWAY 27:** Climb on heading 275° or as assigned by ATC, for RADAR vectors to cross MALTB at or above 2200, thence....

....on track 094° to HHOWE, then on (transition). Maintain ATC assigned altitude, expect filed altitude 10 minutes after departure.

**BROKK TRANSITION (HHOWE4.BROKK):
LINCON TRANSITION (HHOWE4.LINCON):**