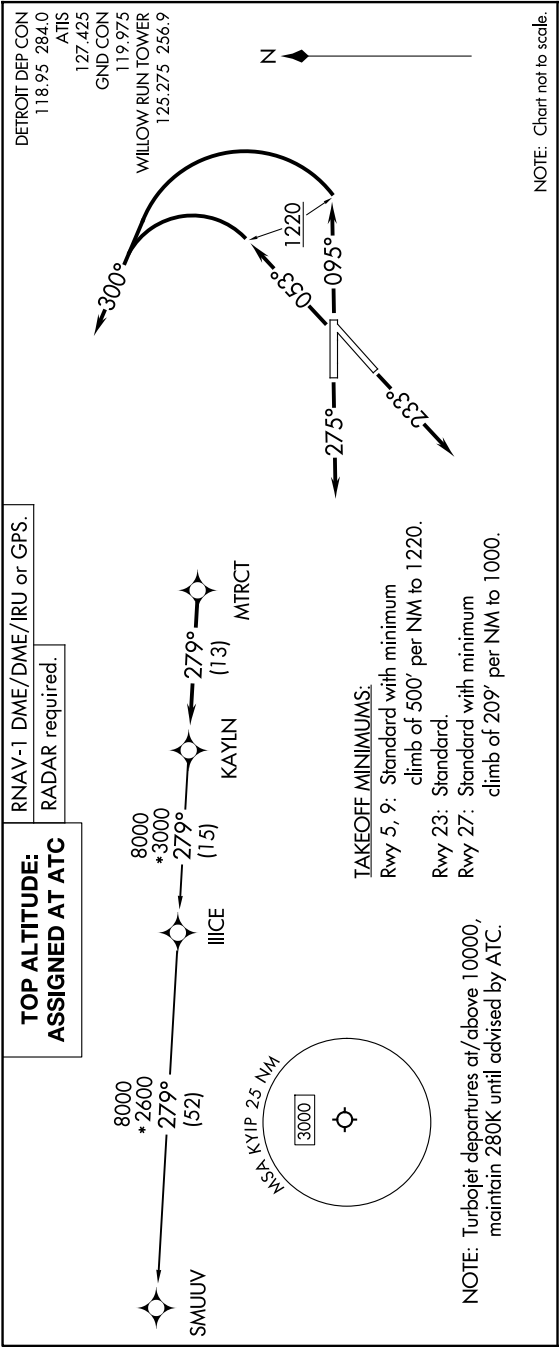


EC-1, 19 MAR 2026 to 16 APR 2026



DETROIT DEP CON  
118.95 284.0  
ATIS  
127.425  
GND CON  
119.975  
WILLOW RUN TOWER  
125.275 256.9

NOTE: Chart not to scale.

DEPARTURE ROUTE DESCRIPTION

**TAKEOFF RUNWAY 5:** Climb on heading 053° to 1220, then on heading 300° or as assigned by ATC, for RADAR vectors to MTRCT, thence....  
**TAKEOFF RUNWAY 9:** Climb on heading 095° to 1220, then on heading 300° or as assigned by ATC, for RADAR vectors to MTRCT, thence....  
**TAKEOFF RUNWAY 23:** Climb on heading 233°, or as assigned by ATC, for RADAR vectors to MTRCT, thence....  
**TAKEOFF RUNWAY 27:** Climb on heading 275°, or as assigned by ATC, for RADAR vectors to MTRCT, thence....  
 ....on track 279° then on (transition). Maintain ATC assigned altitude, expect filed altitude 10 minutes after departure.

SMUUV TRANSITION (KAYLN3.SMUUV):

EC-1, 19 MAR 2026 to 16 APR 2026