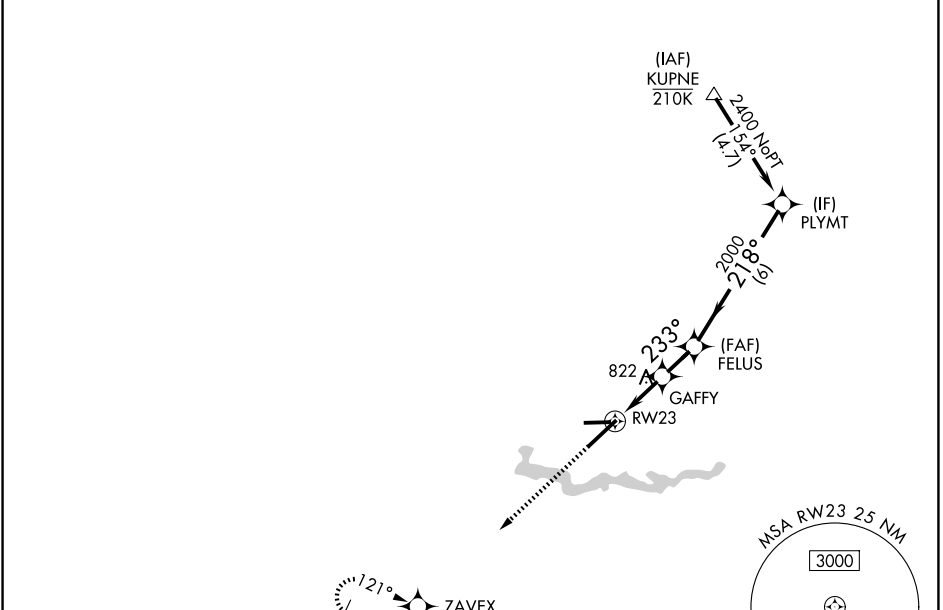


WAAS CH <b>65744</b> <b>W23A</b>	APP CRS <b>233°</b>	Rwy Ldg <b>7543</b> TDZE <b>710</b> Apt Elev <b>716</b>
----------------------------------------	------------------------	---------------------------------------------------------------

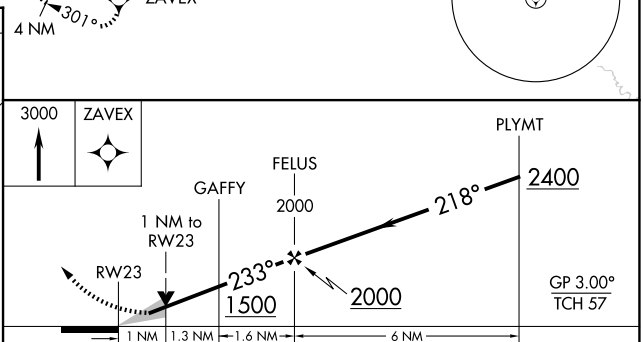
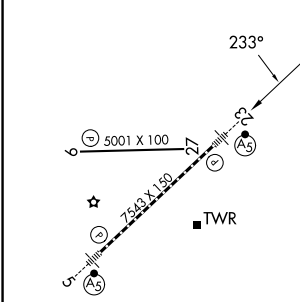
# RNAV (GPS) RWY 23

WILLOW RUN (YIP)

RNP APCH - GPS.		MALSR 	MISSED APPROACH: Climb to 3000 direct ZAVEX and hold, continue climb-in-hold to 3000.
For uncompensated Baro-VNAV systems, procedure NA below -19°C or above 54°C. For inop ALS, increase LNAV/VNAV all Cats visibility to ¾ SM, LNAV Cats C/D visibility to 1 SM.			
ATIS <b>127.425</b>	DETROIT APP CON <b>118.95 284.0</b>	WILLOW RUN TOWER <b>125.275 256.9</b>	GND CON <b>119.975</b>



ELEV 716	<b>D</b>	TDZE 710
----------	----------	----------



CATEGORY	A	B	C	D
LPV DA		910-½	200 (200-½)	
LNAV/VNAV DA		982-½	272 (300-½)	
LNAV MDA	1080-½	370 (400-½)	1080-⅝	370 (400-⅝)
CIRCLING	1 220-1	504 (600-1)	1220-1½ 504 (600-1½)	1400-2¼ 684 (700-2¼)

TDZ/CL Rwy 5  
HIRL Rwy 5-23  
MIRL Rwy 9-27

EC-1, 19 MAR 2026 to 16 APR 2026

EC-1, 19 MAR 2026 to 16 APR 2026