

EC-1, 19 MAR 2026 to 16 APR 2026

DEPARTURE ROUTE DESCRIPTION

**TAKEOFF RUNWAY 5:** Climb on heading 053° to 1220, then on heading 300° or as assigned by ATC, for RADAR vectors to JWELS, thence....

**TAKEOFF RUNWAY 9:** Climb on heading 095° to 1220, then on heading 300° or as assigned by ATC, for RADAR vectors to JWELS, thence....

**TAKEOFF RUNWAY 23:** Climb on heading 233° or as assigned by ATC, for RADAR vectors to JWELS, thence....

**TAKEOFF RUNWAY 27:** Climb on heading 275° or as assigned by ATC, for RADAR vectors to JWELS, thence....

....on track 218° to SNDRS, then on (transition). Maintain ATC assigned altitude, expect filed altitude 10 minutes after departure.

**BGHRT TRANSITION (SNDRS3.BGHRT):**  
**TORRR TRANSITION (SNDRS3.TORRR):**

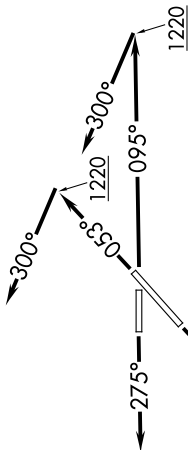
**NOTE:** Turbojet departures at/ above 10000, maintain 280K until advised by ATC.

**NOTE:** TORRR Transition: For use by KIND and KCVG area arrivals only and flights filed at or below FL220, or as assigned by ATC.

TOP ALTITUDE: ASSIGNED BY ATC

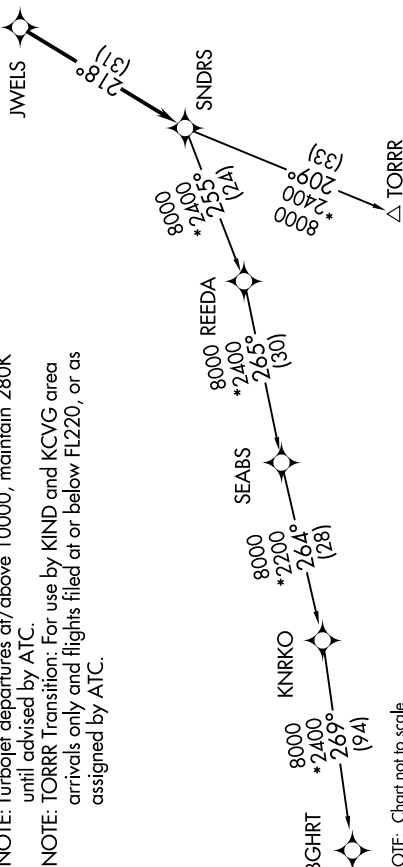
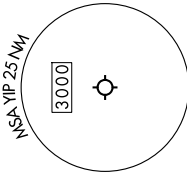
RNAV-1 DME/DME/IRU or GPS.  
 RADAR required.

DETROIT DEP CON 118.95 284.0  
 ATIS 127.425  
 GND CON 119.975  
 WILLOW RUN TOWER 125.275 256.9



TAKEOFF MINIMUMS:

Rwy 23: Standard.  
 Rwy 5, 9: Standard with minimum climb of 500' per NM to 1220.  
 Rwy 27: Standard with minimum climb of 209' per NM to 1000.



NOTE: Chart not to scale.

EC-1, 19 MAR 2026 to 16 APR 2026