


APP CRS <b>301°</b>	Rwy Ldg <b>7704</b>
	TDZE <b>405</b>
	Apt Elev <b>410</b>

# RNAV (RNP) Z RWY 30

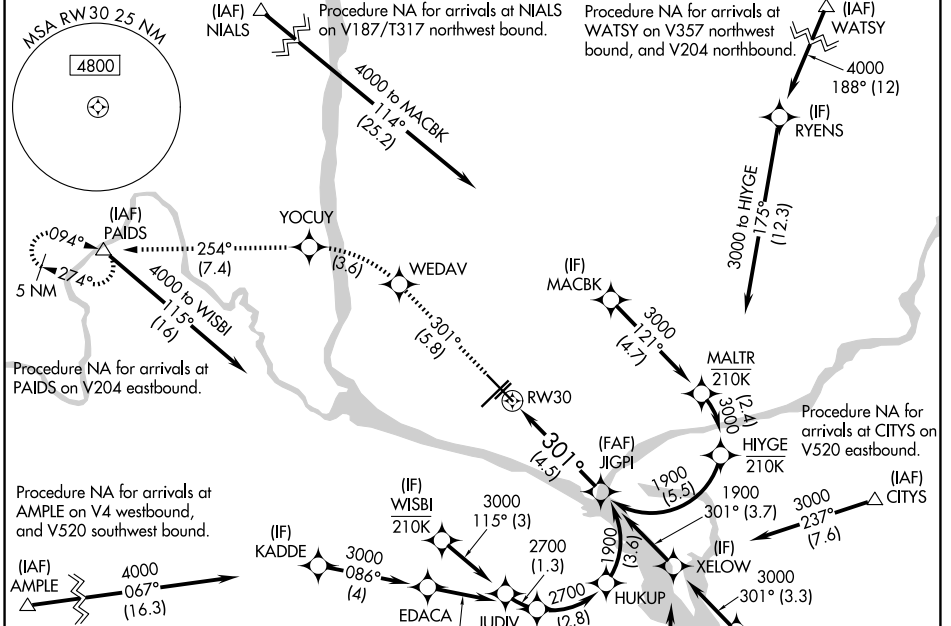
TRI-CITIES (PSC)

RNP AR APCH - GPS, RF. Authorization required. From JUDIV, XELOW, HIYGE, KADDE, OLODE: min RNP 0.50.

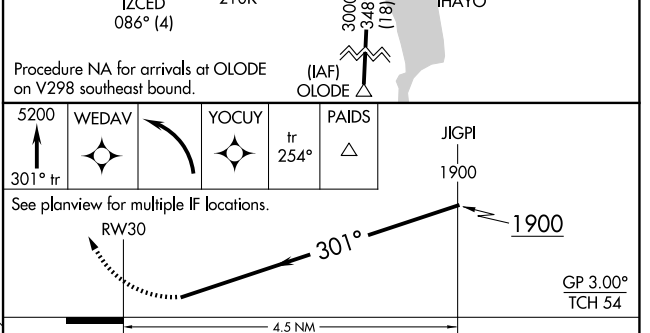
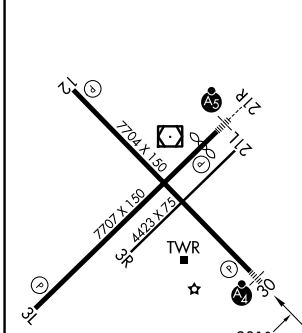
⚠ For uncompensated Baro-VNAV systems, procedure NA below -14°C or above 54°C. For inop ALS, increase RNP 0.30 visibility all Cats to 1 3/8 SM.

**MALSF**  MISSED APPROACH: Climb to 5200 on 301° track to WEDAV, left turn to YOCUY, and track 254° to PAIDS and hold, continue climb-in-hold to 5200.

ATIS <b>125.65</b>	SPOKANE APP CON * <b>128.75 377.2</b>	TRI-CITIES TOWER * <b>135.3 (CTAF) 0 285.55</b>	GND CON <b>121.8</b>	UNICOM <b>122.95</b>
-----------------------	--	--	-------------------------	-------------------------



ELEV 410	<b>D</b>	TDZE 405
----------	----------	----------



CATEGORY	A	B	C	D
RNP 0.11 DA		778-3/4	373 (400-3/4)	
RNP 0.30 DA		852-1	447 (500-1)	

## AUTHORIZATION REQUIRED

NW-1, 19 MAR 2026 to 16 APR 2026

NW-1, 19 MAR 2026 to 16 APR 2026