

# RNAV (RNP) Z RWY 3L

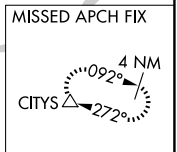
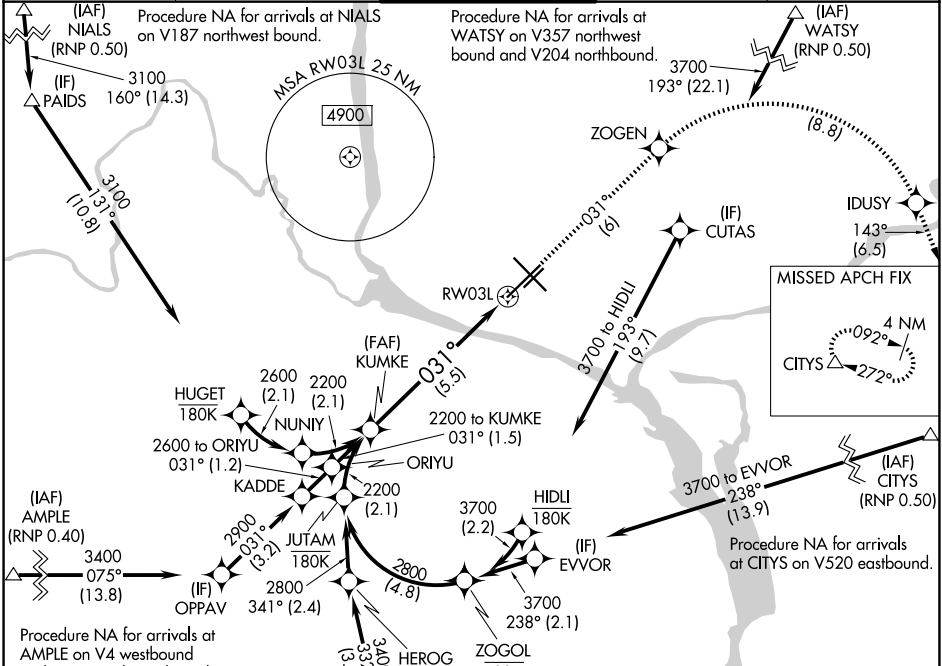
TRI-CITIES (PSC)

APP CRS <b>031°</b>	Rwy Ldg TDZE Apt Elev	<b>7707</b> <b>410</b> <b>410</b>
------------------------	-----------------------------	-----------------------------------------

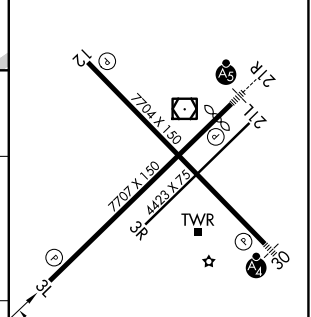
RNP AR APCH. RF required.  
 For uncompensated Baro-VNAV systems, procedure NA below -14°C or above 54°C.

MISSED APPROACH: Climb to 3200 on track 031° to ZOGEN, right turn to IDUSY, and on track 143° to CITYS and hold.

ATIS <b>125.65</b>	SPOKANE APP CON * <b>128.75 377.2</b>	TRI-CITIES TOWER * <b>135.3 (CTAF) 285.55</b>	GND CON <b>121.8</b>	UNICOM <b>122.95</b>
-----------------------	------------------------------------------	--------------------------------------------------	-------------------------	-------------------------

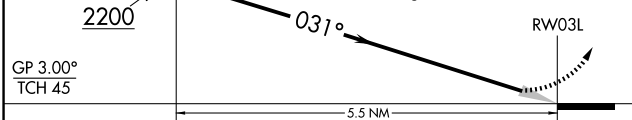


ELEV 410	D	TDZE 410
----------	---	----------



See planview for multiple IF locations.	KUMKE	3200	ZOGEN	IDUSY	CITYS
	2200	tr 031°		tr 143°	△

VGSI and RNAV glidepath not coincident (VGSI Angle 3.00/TCH 49).



CATEGORY	A	B	C	D
RNP 0.11 DA		729-1	319 (400-1)	
RNP 0.30 DA		849-1½	439 (500-1½)	

**AUTHORIZATION REQUIRED**

- REIL Rwy 3L and 12R
- MIRL Rwy 12-30
- HIRL Rwy 3L-21R

NW-1, 19 MAR 2026 to 16 APR 2026

NW-1, 19 MAR 2026 to 16 APR 2026