

WAAS CH 40303 W21A	APP CRS 211°	Rwy Ldg 7110 TDZE 404 Apt Elev 410
--	------------------------	---

RNAV (GPS) Y RWY 21R

TRI-CITIES (PSC)

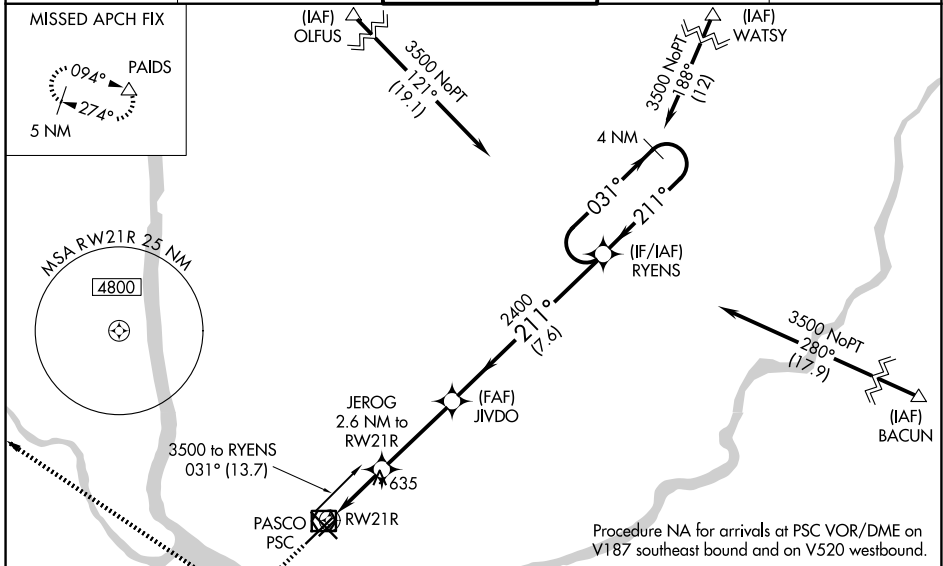
⚠ Baro-VNAV NA when using Hermiston altimeter setting. For uncompensated Baro-VNAV systems, LNAV/VNAV NA below -1.4°C (7°F) or above 54°C (130°F). DME/DME RNP-0.3 NA. VDP NA with Hermiston altimeter setting. When local altimeter setting not received, use Hermiston altimeter setting and increase all DA 95 feet and all MDA 100 feet; increase LNAV/VNAV all Cats visibility 3/8 mile; LNAV Cat C and D visibility 3/8 mile and Circling Cat C and D visibility 1/4 mile.
RVR 1800 authorized with use of FD or AP or HUD to DA, NA when using Hermiston altimeter setting.

MALSR

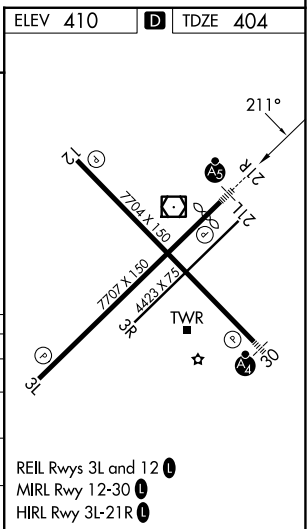
MISSED APPROACH:
Climb to 1100 then climbing right turn to 5200 direct PAIDS and hold, continue climb-in-hold to 5200.

ATIS 125.65	SPOKANE APP CON * 128.75 377.2	TRI-CITIES TOWER * 135.3 (CTAF) 285.55	GND CON 121.8	UNICOM 122.95
-----------------------	--	--	-------------------------	-------------------------

MISSED APCH FIX



ELEV 410	D TDZE 404			
1100	5200	PAIDS		
*LNAV only				
RWY 21R				
1.5 NM	1.1 NM	3.5 NM		
JYVDO 2400				
211°				
031°				
3500				
211°				
4 NM Holding Pattern				
GP 3.00° TCH 55				
CATEGORY	A	B	C	D
LPV DA#		604/24	200 (200-1/2)	
LNAV/VNAV DA		844/51	440 (500-1)	
LNAV MDA	940/24	536 (600-1/2)	940/55	536 (600-1)
CIRCLING	940-1	530 (600-1)	1040-1 3/4	1100-2 1/4
			630 (700-1 3/4)	690 (700-2 1/4)



- REIL Rwy 3L and 12 **⓪**
- MIRL Rwy 12-30 **⓪**
- HIRL Rwy 3L-21R **⓪**

NW-1, 19 MAR 2026 to 16 APR 2026

NW-1, 19 MAR 2026 to 16 APR 2026