

WAAS CH <b>86605</b> <b>W30A</b>	APP CRS <b>301°</b>	Rwy Ldg TDZE Apt Elev	<b>7704</b> <b>405</b> <b>410</b>
--	------------------------	-----------------------------	---

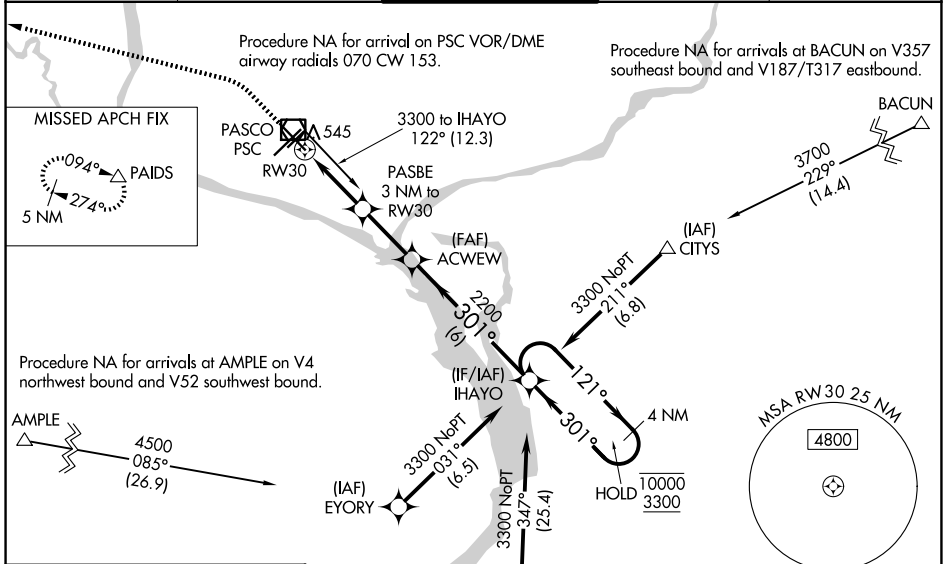
# RNAV (GPS) Y RWY 30

TRI-CITIES (PSC)

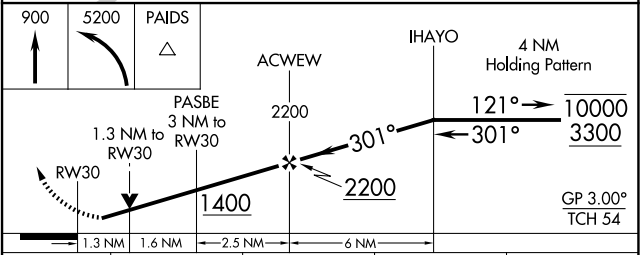
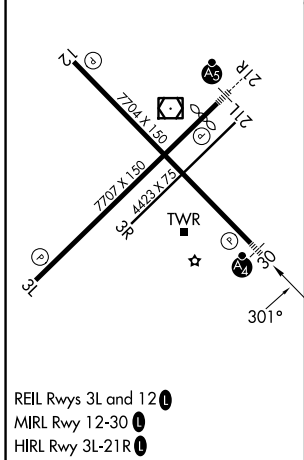
RNP APCH - GPS.

**MAJ** MISSED APPROACH: Climb to 900 then climbing left turn to 5200 direct PAIDS and hold, continue climb-in-hold to 5200.

ATIS <b>125.65</b>	SPOKANE APP CON * <b>128.75 377.2</b>	<b>TRI-CITIES TOWER*</b> <b>135.3 (CTAF) 285.55</b>	GND CON <b>121.8</b>	UNICOM <b>122.95</b>
-----------------------	--	--	-------------------------	-------------------------



ELEV 410	<b>D</b>	TDZE 405
----------	----------	----------



CATEGORY	A	B	C	D
LPV DA		655- <sup>3</sup> / <sub>4</sub>	250 (300- <sup>3</sup> / <sub>4</sub> )	
LNAV/VNAV DA		793- <sup>7</sup> / <sub>8</sub>	388 (400- <sup>7</sup> / <sub>8</sub> )	
LNAV MDA	880- <sup>3</sup> / <sub>4</sub>	475 (500- <sup>3</sup> / <sub>4</sub> )	880-1 <sup>1</sup> / <sub>8</sub>	475 (500-1 <sup>1</sup> / <sub>8</sub> )
CIRCLING	900-1 490 (500-1)	940-1 530 (600-1)	1040-1 <sup>3</sup> / <sub>4</sub> 630 (700-1 <sup>3</sup> / <sub>4</sub> )	1100-2 <sup>1</sup> / <sub>4</sub> 690 (700-2 <sup>1</sup> / <sub>4</sub> )

NW-1, 19 MAR 2026 to 16 APR 2026

NW-1, 19 MAR 2026 to 16 APR 2026