

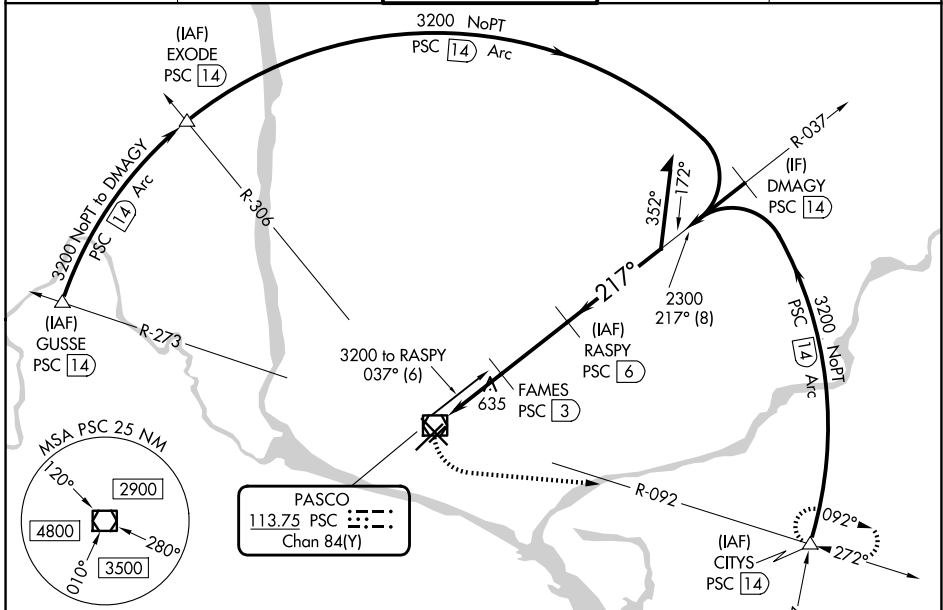
VOR/DME PSC 113.75 Chan 84(Y)	APP CRS 217°	Rwy Ldg 7110 TDZE 404 Apt Elev 410
---------------------------------------------------	------------------------	---------------------------------------------------------------

VOR RWY 21R

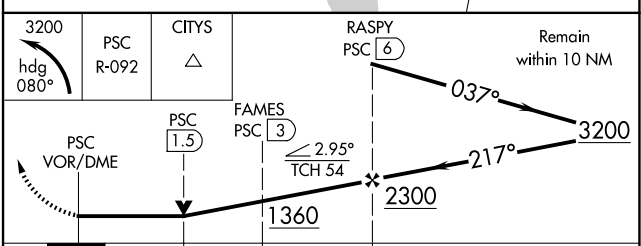
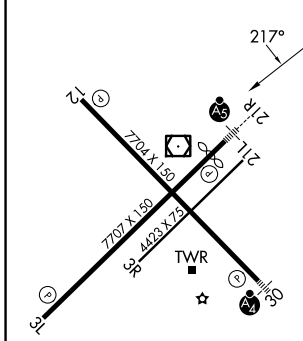
TRI-CITIES (PSC)

DME required.	MALSR 	MISSED APPROACH: Climbing left turn to 3200 on heading 080° and PSC VOR/DME R-092 PSC VOR/DME to CITYS INT/PSC 1.4 DME and hold.
<p>▼ VDP NA when using Hermiston altimeter setting. When local altimeter setting not received, use Hermiston altimeter setting and increase all MDA 100 feet and increase S-21R Cat C/D visibility 3/8 SM and Circling Cat C/D visibility 1/4 SM. For inop ALS when using Hermiston altimeter setting, increase Cat C/D visibility to 1 1/4 SM.</p>		

ATIS 125.65	SPOKANE APP CON* 128.75 377.2	TRI-CITIES TOWER* 135.3 (CTAF) 285.55	GND CON 121.8	UNICOM 122.95
-----------------------	-----------------------------------------	-------------------------------------------------	-------------------------	-------------------------



ELEV 410	D	TDZE 404
----------	----------	----------



CATEGORY	A	B	C	D
S-21R	940/24	536 (600-1/2)	940/55	536 (600-1)
CIRCLING	940-1	530 (600-1)	1040-1 3/4 630 (700-1 3/4)	1100-2 1/4 690 (700-2 1/4)

PASCO, WASHINGTON
Amdt 7A 05DEC19

46°16'N-119°07'W

TRI-CITIES (PSC)

VOR RWY 21R

NW-1, 19 MAR 2026 to 16 APR 2026

NW-1, 19 MAR 2026 to 16 APR 2026