

KNOB NOSTER, MISSOURI

HI-ILS or LOC Z RWY 19

LOC I-MXJ 108.5	APCH CRS 190°	Rwy Ildg 12,400 TDZE 871 Arprt Elev 871	[USAF]	WHITEMAN AFB (KSZL)
---------------------------	-------------------------	--	--------	---------------------

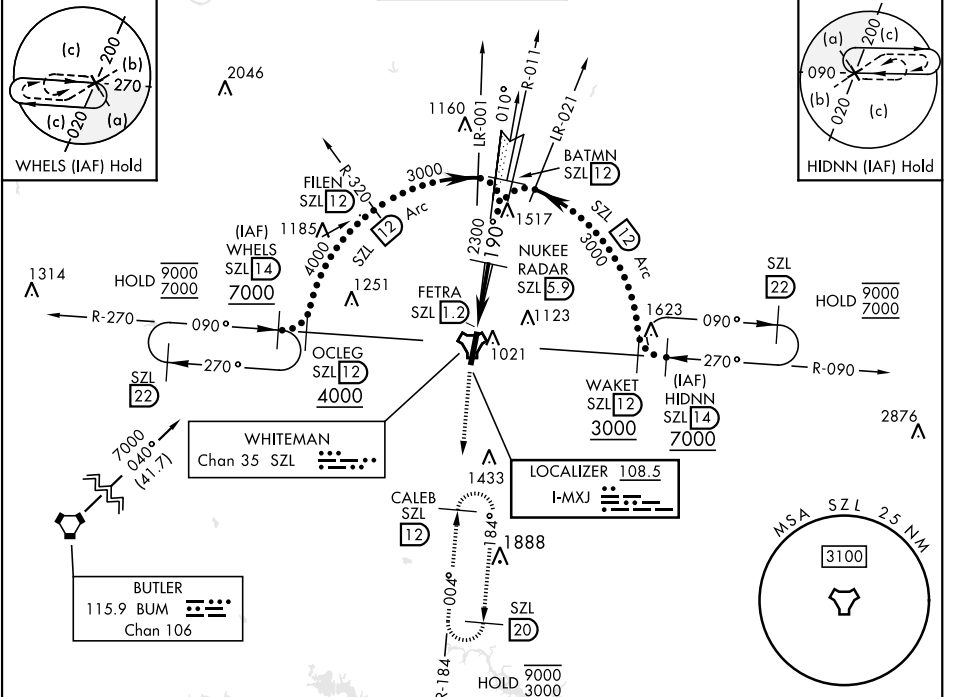
RADAR or DME required

▼ *When ALS inop, increase CAT CDE RVR to 40 and vis to ¾ mile.
 ** When ALS inop, increase CAT CDE vis to 1½ miles.
 *** Circling not authorized W of Rwy 1-19.

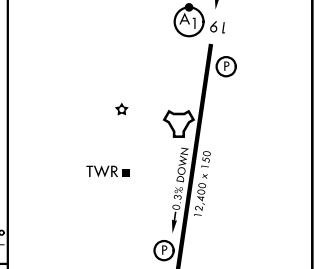
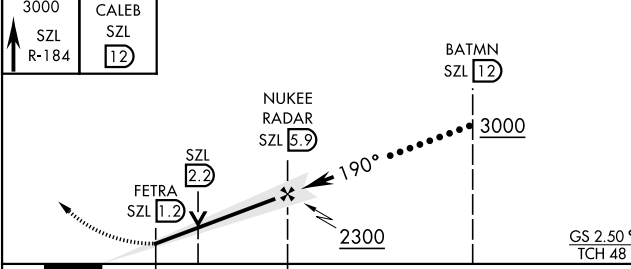
ALSF-1

MISSED APPROACH: Climb to 3000 via SZL TACAN R-184 to CALEB and hold.

ATIS ★ 118.725 239.025	APP CON ★ 127.45 284.0	TOWER ★ 132.4 318.8	GND CON ★ 119.125 275.8	ASR
----------------------------------	----------------------------------	-------------------------------	-----------------------------------	-----



EMERG SAFE ALT 100 NM 4700	ELEV 871	TDZE 871
----------------------------	----------	----------



CATEGORY	C	D	E
S-ILS 19*	1071/24	200	(200-½)
S-LOC 19**	1300/40	429	(500-¾)
CIRCLING***	1340-1½ 469 (500-1½)	1440-2 569 (600-2)	1460-2 589 (600-2)

HIRL Rwy 1-19					
FAF to MAP 4.7 NM					
Knots	120	140	160	180	200
Min:Sec	2:21	2:01	1:46	1:34	1:25

KNOB NOSTER, MISSOURI 38°44'N-93°33'W WHITEMAN AFB (KSZL)

HI-ILS or LOC Z RWY 19

NC-3, 19 MAR 2026 to 16 APR 2026

NC-3, 19 MAR 2026 to 16 APR 2026