

KNOB NOSTER, MISSOURI

HI-TACAN Z RWY 1

TACAN SZL Chan 35	APCH CRS 004°	Rwy Idg 12,400 TDZE 837 Arprt Elev 871
-----------------------------	-------------------------	---

[USAF]

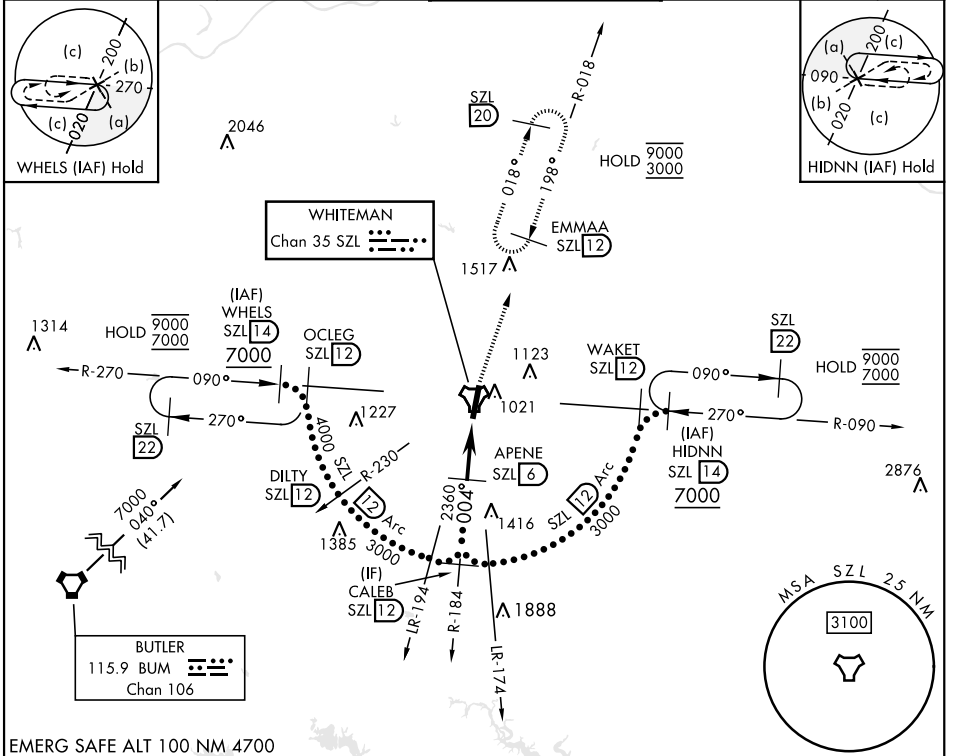
WHITEMAN AFB (KSZL)

▼ * When ALS inop, increase CAT CDE vis to 1½ miles.
** Circling not authorized W of Rwy 1-19.



MISSED APPROACH: Climb to 3000 via SZL TACAN R-018 to EMMAA and hold.

ATIS ★ 118.725 239.025	APP CON ★ 127.45 284.0	TOWER ★ 132.4 318.8	GND CON ★ 119.125 275.8	ASR
----------------------------------	----------------------------------	-------------------------------	-----------------------------------	-----



NC-3, 19 MAR 2026 to 16 APR 2026

NC-3, 19 MAR 2026 to 16 APR 2026

EMERG SAFE ALT 100 NM 4700

	3000 SZL R-018	EMMAA SZL 12	ELEV 871	TDZE 837
CATEGORY	C	D	E	
S-1 *	1360/55 523 (500-1)			
CIRCLING **	1360-1½ 489 (500-1½)	1440-2 569 (600-2)	1460-2 589 (600-2)	
	HIRL Rwy 1-19 004°			

KNOB NOSTER, MISSOURI

38° 44' N-93° 33' W

WHITEMAN AFB (KSZL)

Amdt 2 25DEC25

HI-TACAN Z RWY 1

