

KNOB NOSTER, MISSOURI

ILS or LOC Y RWY 1

LOC I-SZL 110.3	APCH CRS 010°	Rwy ldg TDZE Arprt Elev	12,400 837 871
---------------------------	-------------------------	-------------------------------	-------------------------------------------

(USAF)

WHITEMAN AFB (KSZL)

RADAR or DME required

ALSF-1

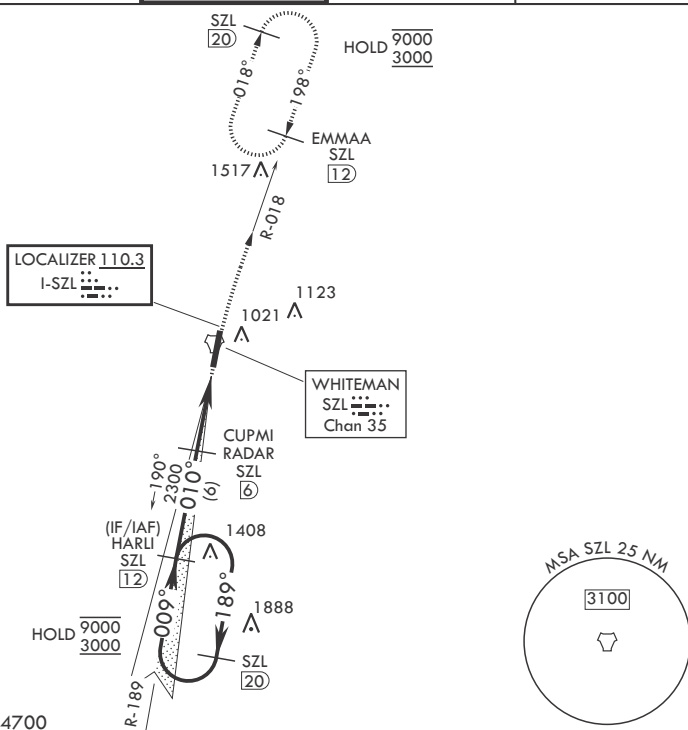
MISSED APPROACH: Climb to 3000 via SZL TACAN R-018 to EMMAA and hold.

▼ * When ALS inop, increase CAT ABCDE RVR to 40, vis to 3/4 mile.
 ** When ALS inop, increase CAT AB RVR to 55, vis to 1 mile; CAT CDE vis to 1 3/8 miles.
 *** Circling not authorized W of Rwy 1-19.

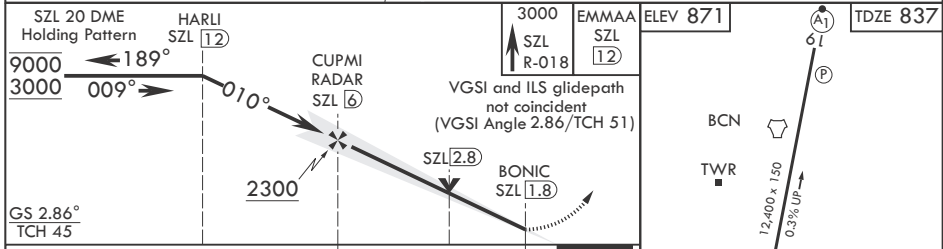


ATIS★ 118.725 239.025	APP CON★ 127.45 284.0	TOWER★ 132.4 318.8	GND CON★ 119.125 275.8	ASR
---------------------------------	---------------------------------	------------------------------	----------------------------------	-----

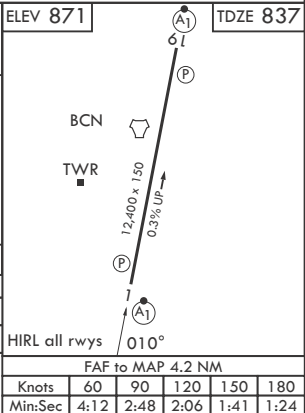
*** Circling not authorized W of Rwy 1-19.



EMERG SAFE ALT 100 NM 4700



CATEGORY	A	B	C	D	E
S-ILS 1*	1037/24		200	(200-½)	
S-LOC 1**	1340/24	503 (500-½)	1340/55	503	(500-1)
CIRCLING***	1340-1	469 (500-1)	1340-1½ 469 (500-1½)	1440-2 569 (600-2)	1460-2 589 (600-2)



KNOB NOSTER, MISSOURI
Amdt 2 25DEC25

38°44'N - 93°33'W

WHITEMAN AFB (KSZL)

ILS or LOC Y RWY 1

NC-3, 19 MAR 2026 to 16 APR 2026

NC-3, 19 MAR 2026 to 16 APR 2026