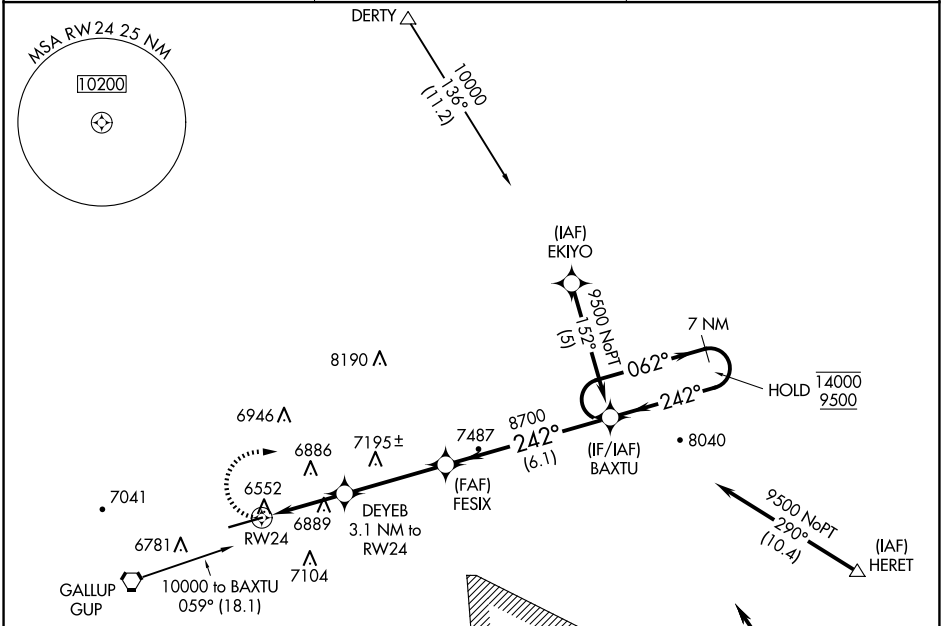


APP CRS **242°**
 Rwy Ldg **7312**
 TDZE **6472**
 Apt Elev **6472**

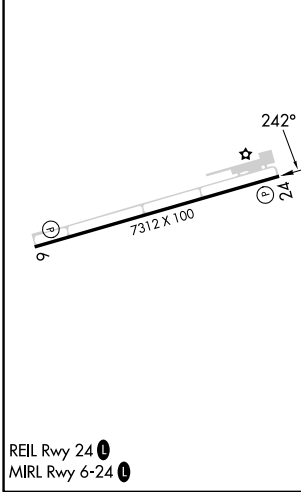
RNAV (GPS) RWY 24
 GALLUP MUNI (GUP)

RNP APCH. MISSED APPROACH: Climbing right turn to 9500 direct BAXTU and hold.

ASOS **118.375** ALBUQUERQUE CENTER **124.325 288.25** UNICOM **122.95 (CTAF) 0**



ELEV 6472 TDZE 6472



9500	BAXTU	VGSI and descent angles not coincident (VGSI Angle 3.00/TCH 48).		7 NM
		DEYEB	FESIX	BAXTU
		3.1 NM to RW24		Holding Pattern
		≤ 3.00° TCH 45	8700	14000/9500
		3.1 NM	3.8 NM	6.1 NM
CATEGORY	A	B	C	D
RNAV MDA	7360-1¼	888 (900-1¼)	7360-2½	888 (900-2½)
CIRCLING	7360-1¼	888 (900-1¼)	7460-3 988 (1000-3)	7720-3 1248 (1300-3)

SW-1, 19 MAR 2026 to 16 APR 2026

SW-1, 19 MAR 2026 to 16 APR 2026