

PLAINS TWO DEPARTURE  
(PLAIN2.DEN) 12JUN25

PLAINS TWO DEPARTURE  
25219

AL-538 (FAA)

BUCKLEY SPACE FORCE BASE (KBKFT)  
AURORA, COLORADO

DENVER DEP CON  
128.45 251.075  
ATIS  
119.675 259.3  
CLNC DEL  
121.6 275.8

**TOP ALTITUDE:  
ASSIGNED BY ATC**

RADAR required.

AKRON  
114.4 AKO  
Chan 91

HAYES CENTER  
117.7 HCT  
Chan 124

MC COOK  
115.3 MCK  
Chan 100

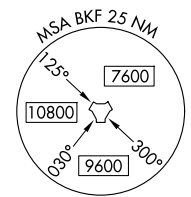
THURMAN  
112.9 TXC  
Chan 76

GOODLAND  
115.1 GLD  
Chan 98

GARDEN CITY  
113.3 GCK  
Chan 80

DENVER  
117.9 DEN  
Chan 126

BUCKLEY  
Chan 33  
BKF  
(109.6)



TAKEOFF MINIMUMS  
All Rwys: Standard.

NOTE: Chart not to scale.

(CONTINUED ON FOLLOWING PAGE)





DEPARTURE ROUTE DESCRIPTION

TAKEOFF ALL RUNWAYS: Fly assigned heading and altitude for RADAR vectors to assigned route. Expect filed altitude 10 minutes after departure.

LOST COMMUNICATIONS: If no transmissions are received within one minute after departure, maintain assigned heading until 7000, then climb to filed altitude direct to DEN VOR/DME, then on assigned route. If filed altitude is above 10000, cross DEN VOR/DME at or above 11000.

AKRON TRANSITION (PLAIN2.AKO): From over DEN VOR/DME on DEN R-065 and AKO R-241 to AKO VOR/DME.

ASHBY TRANSITION (PLAIN2.ASHBY): From over DEN VOR/DME on DEN R-065 and AKO R-241 to AKO VOR/DME, then on AKO R-066 and HCT R-250 to ASHBY.

BELKE TRANSITION (PLAIN2.BELKE): From over DEN VOR/DME on DEN R-076 and MCK R-253 to BELKE INT.

CABET TRANSITION (PLAIN2.CABET): From over DEN VOR/DME on DEN R-087 and TXC R-264 to TXC VORTAC, then on TXC R-084 to CABET.

GARDEN CITY TRANSITION (PLAIN2.GCK): From over DEN VOR/DME on DEN R-100 and GCK R-309 to GCK VORTAC.

GOODLAND TRANSITION (PLAIN2.GLD): From over DEN VOR/DME on DEN R-087 and TXC R-264 to TXC VORTAC, then on TXC R-092 and GLD R-273 to GLD VORTAC.

HAYES CENTER TRANSITION (PLAIN2.HCT): From over DEN VOR/DME on DEN R-065 and AKO R-241 to AKO VOR/DME, then on AKO R-066 and HCT R-250 to HCT VORTAC.

MCCOOK TRANSITION (PLAIN2.MCK): From over DEN VOR/DME on DEN R-076 to TEKMY, then on MCK R-253 to MCK VOR/DME.

THURMAN TRANSITION (PLAIN2.TXC): From over DEN VOR/DME on DEN R-087 and TXC R-264 to TXC VORTAC.

WEEDS TRANSITION (PLAIN2.WEEDS): From over DEN VOR/DME on DEN R-100 to WEEDS.

SW-1, 19 MAR 2026 to 16 APR 2026

SW-1, 19 MAR 2026 to 16 APR 2026