

LOC/DME I-JQX 108.9 Chan 26	APP CRS 178°	Rwy Ldg 6499 TDZE 965 Apt Elev 978
---	------------------------	---

ILS or LOC RWY 18

JOPLIN RGNL (JLN)

DME required for LOC only. ADF required. RADAR required for procedure entry.

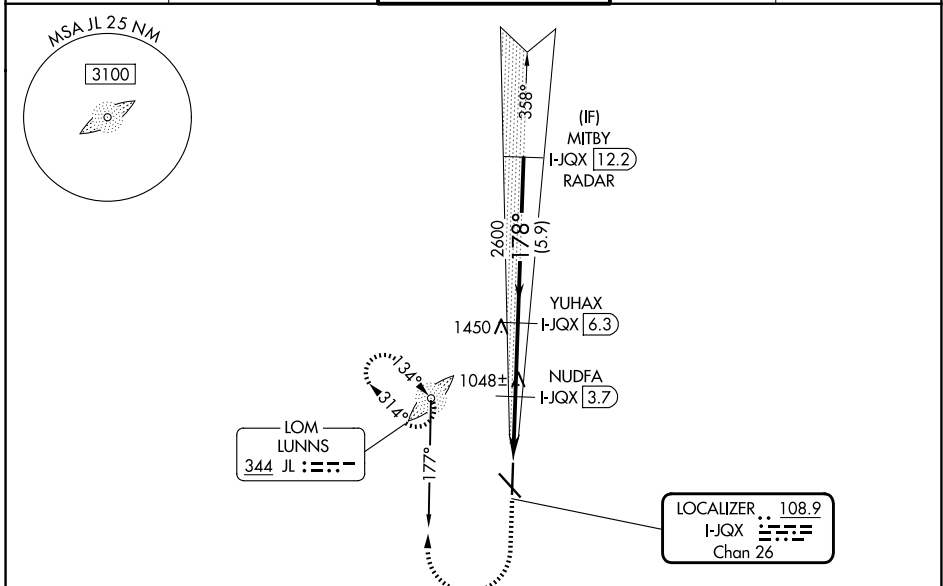
- ⚠** Autopilot coupled approach NA below 1147.
- ⚠** For inop ALS, increase S-ILS 18 all Cats visibility to RVR 4500 and S-LOC 18 Cat C/D visibility to RVR 5500.

MALSR

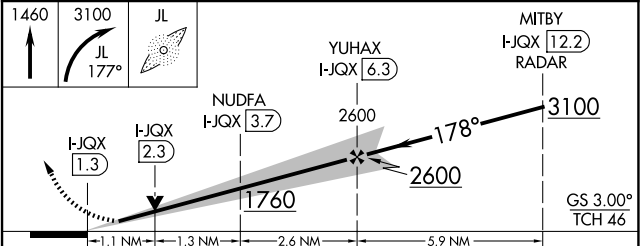
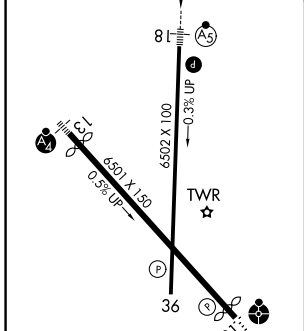


MISSED APPROACH: Climb to 1460 then climbing right turn to 3100 on LUNNS LOM bearing 177° to LUNNS LOM and hold, continue climb-in-hold to 3100. S-ILS 18* missed approach requires minimum climb of 204 feet per NM to 2240. (If unable to meet climb gradient use S-ILS 18 minimums).

ATIS 120.85	KANSAS CITY CENTER 128.6 282.325	JOPLIN TOWER* 119.8 (CTAF) 1	GND CON 121.6	UNICOM 122.95
-----------------------	--	--	-------------------------	-------------------------



ELEV 978	D	TDZE 965
----------	----------	----------



CATEGORY	A	B	C	D
S-ILS 18*	1165/24		200 (200-1/2)	
S-ILS 18	1240/24		275 (300-1/2)	
S-LOC 18	1340/24	375 (400-1/2)		1340/35 375 (400-5/8)
CIRCLING	1420-1 442 (500-1)	1480-1 502 (600-1)	1540-1 3/4 562 (600-1 3/4)	1600-2 622 (700-2)

FAF to MAP 5 NM					
Knots	60	90	120	150	180
Min:Sec	5:00	3:20	2:30	2:00	1:40