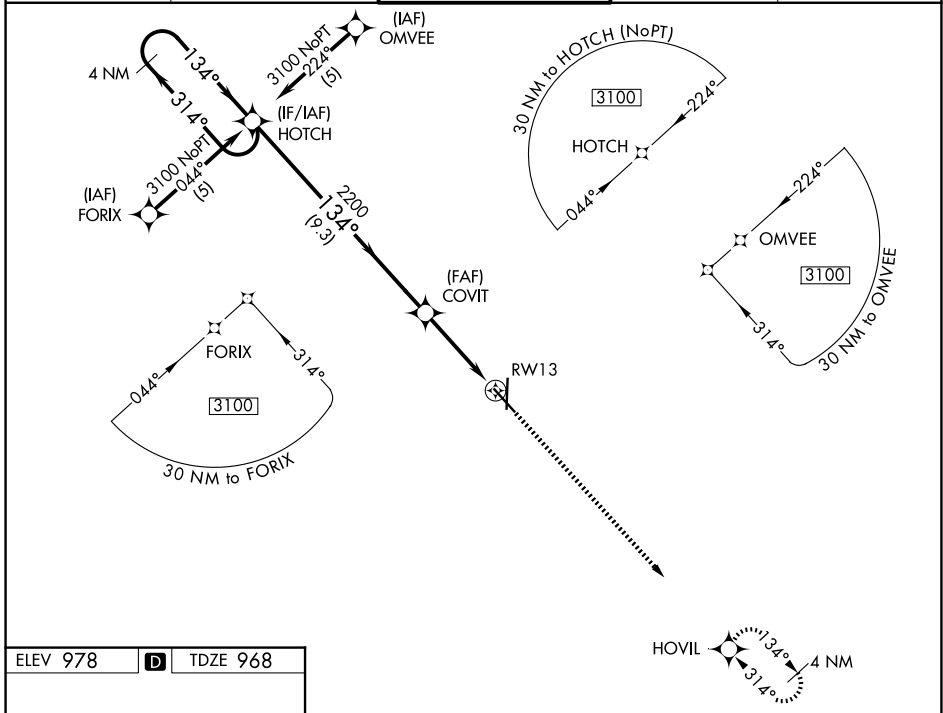


WAAS CH <b>90109</b> <b>W13A</b>	APP CRS <b>134°</b>	Rwy Ldg TDZE Apt Elev	<b>5813</b> <b>968</b> <b>978</b>
--	------------------------	-----------------------------	---

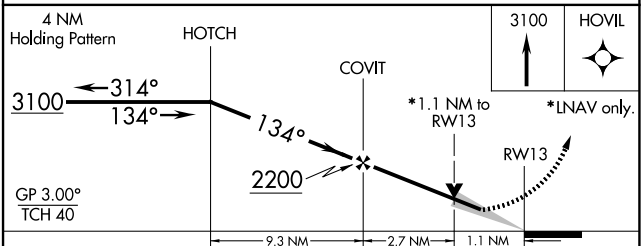
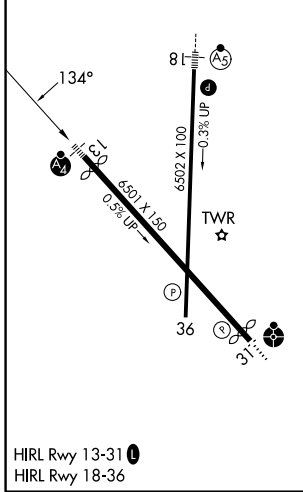
# RNAV (GPS) RWY 13

JOPLIN RGNL (JLN)

RNP APCH.		MALSF	MISSED APPROACH: Climb to 3100 direct HOVIL and hold.	
▼ MALSF (NSTD) 1368'. Baro-VNAV NA below -16°C (4°F). For inop MALSF, increase LPV Cats A/B/C visibility to 1.				
ATIS <b>120.85</b>	KANSAS CITY CENTER <b>128.6 282.325</b>	JOPLIN TOWER* <b>119.8 (CTAF) 0</b>	GND CON <b>121.6</b>	UNICOM <b>122.95</b>



ELEV 978	<b>D</b>	TDZE 968
----------	----------	----------



CATEGORY	A	B	C	D
LPV DA	1220- $\frac{3}{4}$ 252 (300- $\frac{3}{4}$ )		1220-1 252 (300-1)	
LNAV/VNAV DA	1380-1 $\frac{1}{4}$ 412 (400-1 $\frac{1}{4}$ )		1380-1 $\frac{1}{2}$ 412 (400-1 $\frac{1}{2}$ )	
LNAV MDA	1340- $\frac{3}{4}$ 372 (400- $\frac{3}{4}$ )		1340-1 372 (400-1)	
CIRCLING	1500-1 $\frac{1}{2}$	522 (600-1 $\frac{1}{2}$ )	1540-1 $\frac{1}{2}$ 562 (600-1 $\frac{1}{2}$ )	1600-2 622 (700-2)

NC-3, 19 MAR 2026 to 16 APR 2026

NC-3, 19 MAR 2026 to 16 APR 2026