

WAAS CH <b>69334</b> <b>W31A</b>	APP CRS <b>314°</b>	Rwy Ldg TDZE Apt Elev	<b>5813</b> <b>978</b> <b>978</b>
--	------------------------	-----------------------------	---

# RNAV (GPS) RWY 31

JOPLIN RGNL (JLN)

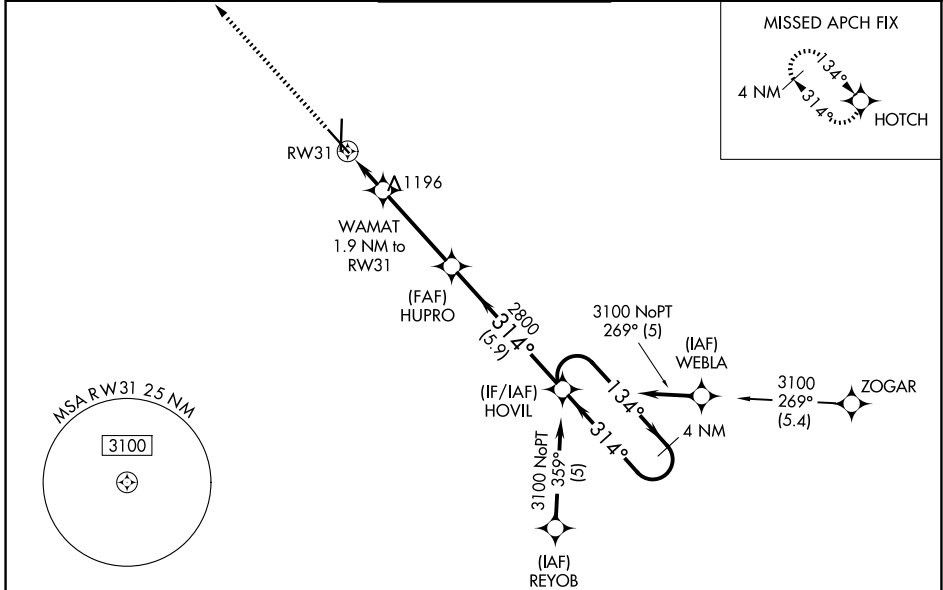
RNP APCH-GPS.

**⚠** For uncompensated Baro-VNAV systems, LNAV/VNAV NA below -16°C or above 54°C. Inoperative table does not apply. Rwy 31 helicopter visibility reduction below ¾ SM NA.

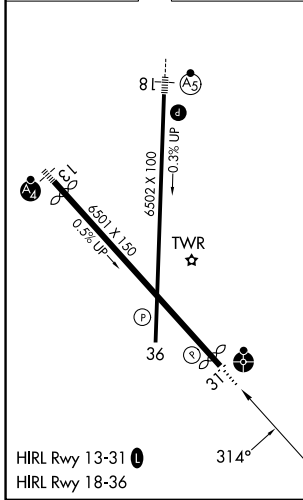
ODALS

MISSED APPROACH: Climb to 3100 direct HOTCH and hold.

ATIS <b>120.85</b>	KANSAS CITY CENTER <b>128.6 282.325</b>	JOPLIN TOWER* <b>119.8 (CTAF) 0</b>	GND CON <b>121.6</b>	UNICOM <b>122.95</b>
-----------------------	--	--	-------------------------	-------------------------



ELEV 978	<b>D</b>	TDZE 978
----------	----------	----------



3100	HOTCH	HOVIL	4 NM Holding Pattern
↑	✧		
* LNAV only.			
WAMAT 1.9 NM to RW31	HUPRO 2800	HOVIL	3100
1620*	2800	314°	134°
1.9 NM	3.7 NM	5.9 NM	
			GP 3.00° TCH 47
CATEGORY	A	B	C
LPV DA		1229-¾	251 (300-¾)
LNAV/VNAV DA		1357-1¼	379 (400-1¼)
LNAV MDA	1500-1	522 (600-1)	1500-1½ 522 (600-1½)
CIRCLING	1500-1	522 (600-1)	1540-1½ 562 (600-1½) 1600-2 622 (700-2)

NC-3, 19 MAR 2026 to 16 APR 2026

NC-3, 19 MAR 2026 to 16 APR 2026