

HI-ILS or LOC Z RWY 31

LOC I-OFF 109.5	APCH CRS 307°	Rwy ldg 10,612 TDZE 991 Arprt Elev 1048	[USAF]	OFFUTT AFB (KOFF)
---------------------------	-------------------------	--	--------	-------------------

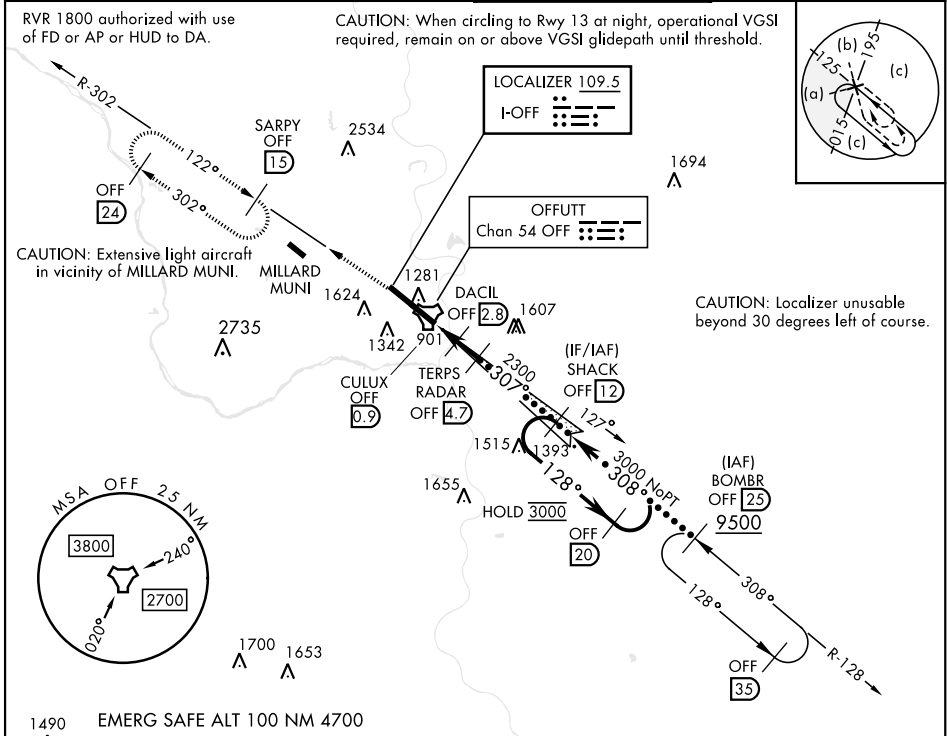
RADAR or DME required

▼ * When ALS inop, increase CAT CDE RVR to 40 and vis to 3/4 mile.
 ** When ALS inop, increase CAT CDE RVR to 55 and vis to 1 mile.
 *** Circling not authorized N of Rwy 13-31.

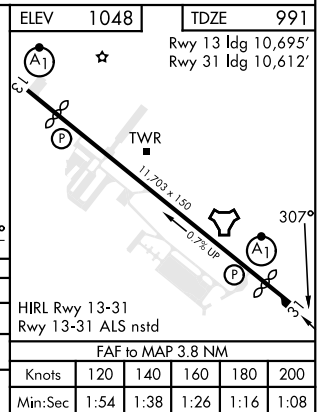
ALS-F1 (A1)

MISSED APPROACH: Climb to 3000 via OFF TACAN R-302 to SARPY and hold.

ATIS 126.025 273.5	OMAHA APP CON 124.5 263.0 (E) 135.875 354.05 (W)	TOWER 123.7 279.625	GND CON 121.7 289.4
------------------------------	--	-------------------------------	-------------------------------



3000 OFF R-302	SARPY OFF (15)	TERPS OFF (4.7) RADAR	SHACK OFF (12)	OFF (20)
OFF TACAN	CULUX OFF (0.9)	DACIL OFF (2.8)	1720	2300
0.5	1.9 NM	1.9 NM		
CATEGORY	C	D	E	
S-ILS 31*	1192/24	200	(200-1/2)	
S-LOC 31**	1360/35	368	(400-3/4)	
CIRCLING ***	1660-13/4 612 (700-13/4)	1940-3	892	(900-3)



HI-ILS or LOC Z RWY 31

NC-2, 19 MAR 2026 to 16 APR 2026

NC-2, 19 MAR 2026 to 16 APR 2026