

OMAHA, NEBRASKA

ILS or LOC RWY 13

LOC I-ATB 111.7	APCH CRS 127°	Rwy ldg 10,695 TDZE 1048 Arpt Elev 1048
---------------------------	-------------------------	--

[USAF]

OFFUTT AFB (KOFF)

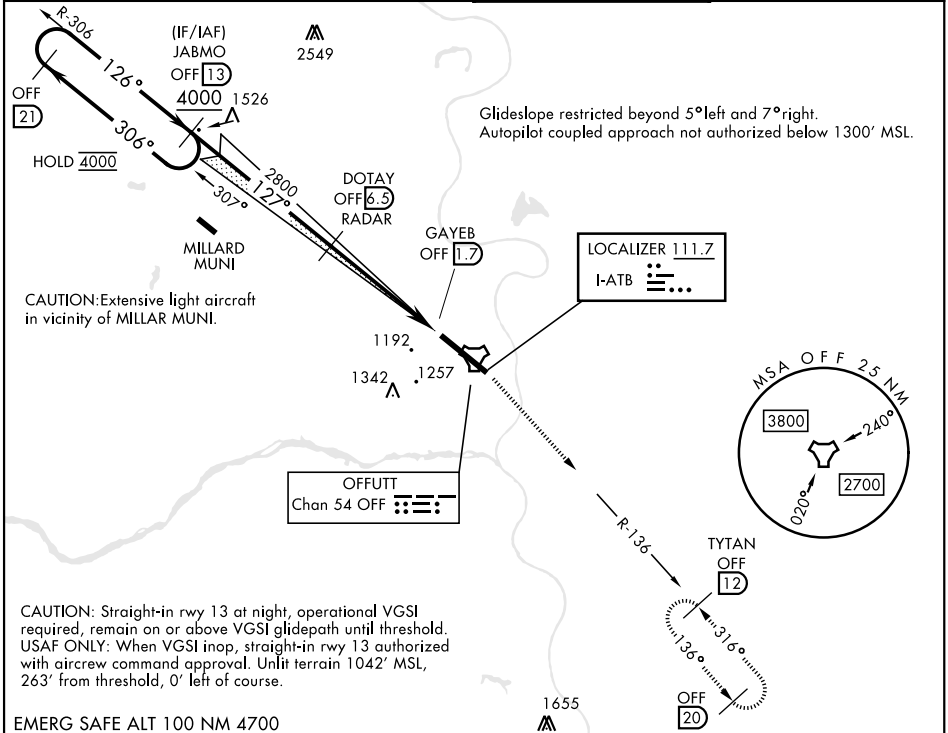
RADAR or DME required

▼ * When ALS inop, increase CAT AB RVR to 55, vis to 1 mile; CAT CDE vis to 1 3/8 miles.
** Circling not authorized N of Rwy 13-31.

ALS-F1
A1

MISSED APPROACH: Climb to 3000 via OFF TACAN R-136 to TYTAN and hold.

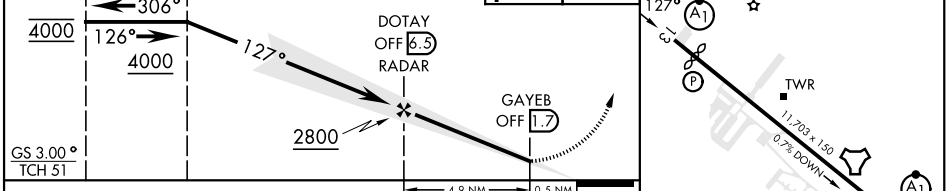
ATIS 126.025 273.5	OMAHA APP CON 124.5 263.0 (E) 135.875 354.05 (W)	TOWER 123.7 279.625	GND CON 121.7 289.4
------------------------------	--	-------------------------------	-------------------------------



NC-2, 19 MAR 2026 to 16 APR 2026

NC-2, 19 MAR 2026 to 16 APR 2026

EMERG SAFE ALT 100 NM 4700	3000 OFF R-136	TYTAN OFF 12	ELEV 1048	TDZE 1048
----------------------------	----------------	--------------	-----------	-----------



CATEGORY	A	B	C	D	E	HIRL Rwy 13-31 Rwy 13-31 ALS nstd
S-ILS 13	1298/50		250	(300-1)		FAF to MAP 4.9 NM
S-LOC 13*	1560/50	512 (600-1)	1560/55	512	(600-1)	Knots: 60 90 120 150 180 Min:Sec: 4:54 3:16 2:27 1:58 1:38
CIRCLING**	1560-1	512 (600-1)	1660-1 3/4 612 (700-134)	1940-3	892 (900-3)	

OMAHA, NEBRASKA

41° 07' N-95° 54' W

OFFUTT AFB (KOFF)

Amtd 1 18APR24

ILS or LOC RWY 13