

OMAHA, NEBRASKA

RNAV (GPS) RWY 13

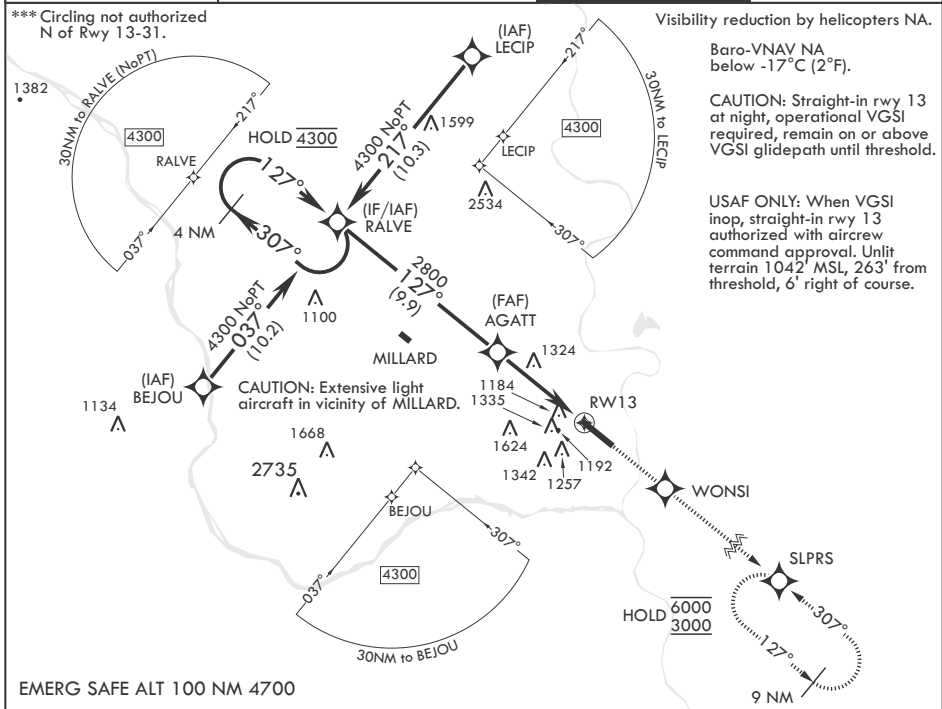
WAAS CH 91358 W13A	APCH CRS 127°	Rwy ldg TDZE Arprt Elev	10,695 1048 1048
--------------------------	------------------	-------------------------------	------------------------

-(USAF)

OFFUTT AFB (KOFF)

RNP APCH-GPS	ALSF-1	MISSED APPROACH: Climb to 3000 direct WONSI, track 127° to SLPRS and hold.
<p>▼ * When ALS inop, increase vis to 1 1/4 miles.</p> <p>** When ALS inop, increase CAT AB RVR to 55, vis to 1 mile; CAT CDE vis to 1 1/2 miles.</p>		

<p>ATIS 126.025 273.5</p>	<p>OMAHA APP CON/DEP CON 124.5 263.0 E 135.875 354.05 W</p>	<p>TOWER 123.7 279.625</p>	<p>GND CON 121.7 289.4</p>
-------------------------------	---	--------------------------------	--------------------------------



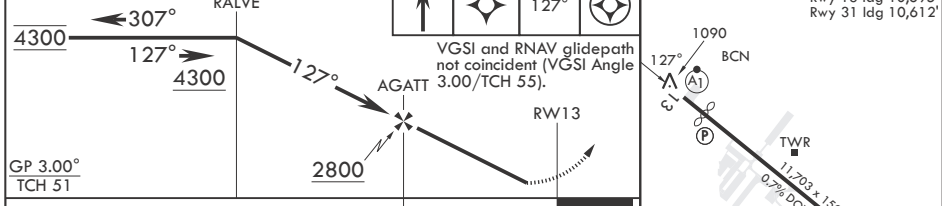
Visibility reduction by helicopters NA.
Baro-VNAV NA below -17°C (2°F).

CAUTION: Straight-in rwy 13 at night, operational VGSI required, remain on or above VGSI glidepath until threshold.

USAF ONLY: When VGSI inop, straight-in rwy 13 authorized with aircrew command approval. Unlit terrain 1042' MSL, 263' from threshold, 6' right of course.

EMERG SAFE ALT 100 NM 4700

4 NM Holding Pattern	3000	WONSI	tr 127°	SLPRS	ELEV 1048	TDZE 1048
----------------------	------	-------	---------	-------	-----------	-----------



GP 3.00° TCH 51						1090 BCN	11,703 x 150 0.7% DOWN
CATEGORY	A	B	C	D	E		
LPV DA	1298/50		250	(300-1)			
LNAV/VNAV DA*	1479/50		431	(500-1)			
LNAV MDA**	1580/50 532 (600-1)		1580/55	532 (600-1)			
☐ CIRCLING***	1580-1 532 (600-1)		1660-1 1/4 612 (700-1 1/4)	1940-3 892 (900-3)		HIRL all Rws Rwy 13-31 ALS nstd	

OMAHA, NEBRASKA 41°07'N - 95°55'W OFFUTT AFB (KOFF)

Amdt 1 22FEB24

RNAV (GPS) RWY 13

NC-2, 19 MAR 2026 to 16 APR 2026

NC-2, 19 MAR 2026 to 16 APR 2026