

OMAHA, NEBRASKA

# TACAN Y RWY 31

TACAN OFF Chan <b>54</b>	APCH CRS <b>316°</b>	Rwy ldg <b>10,612</b> TDZE <b>991</b> Arprt Elev <b>1048</b>
-----------------------------	-------------------------	--------------------------------------------------------------------

[USAF]

OFFUTT AFB (KOFF)

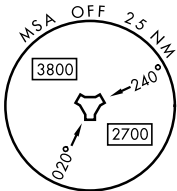
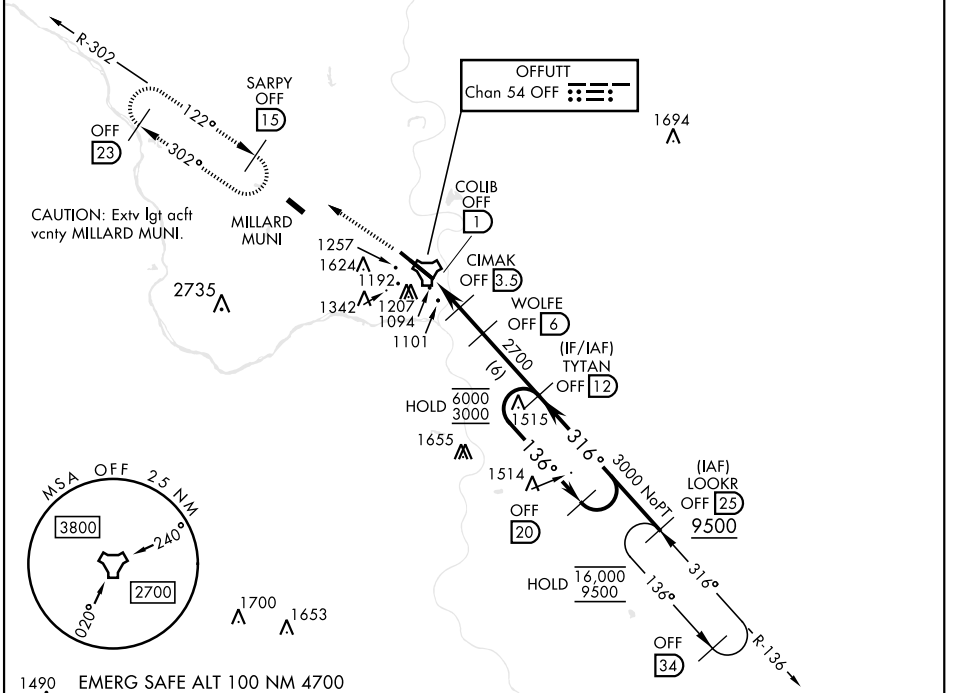
▼ \* When ALS inop, increase RVR to 55, vis to 1 mile.  
\*\* Circling not authorized N of Rwy 13-31.



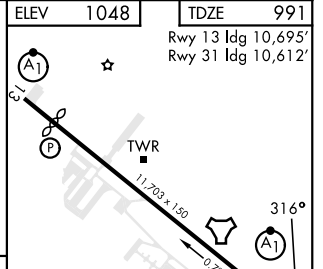
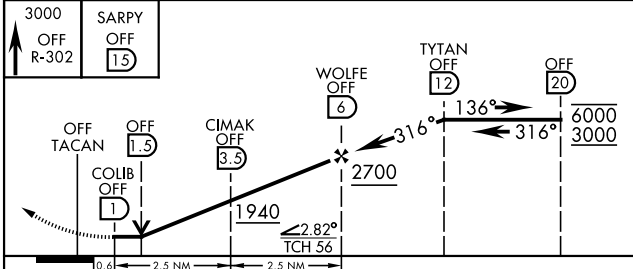
MISSED APPROACH: Climb to 3000 via OFF TACAN R-302 to SARPY and hold.

ATIS <b>126.025 273.5</b>	OMAHA APP CON <b>124.5 263.0</b> (E) <b>135.875 354.05</b> (W)	TOWER <b>123.7 279.625</b>	GND CON <b>121.7 289.4</b>
------------------------------	----------------------------------------------------------------------	-------------------------------	-------------------------------

CAUTION: When circling to Rwy 13 at night, operational VGSI required, remain on or above VGSI glidepath until threshold.



1490 EMERG SAFE ALT 100 NM 4700



CATEGORY	A	B	C	D	E
S-31*	1360/24	368 (400-½)	1360/40	368 (400-¾)	
CIRCLING**	1500-1 452 (500-1)	1560-1 512 (600-1)	1660-1¾ 612 (700-1¾)	1940-3	892 (900-3)

HIRL Rwy 13-31  
Rwy 13-31 ALS nstd

OMAHA, NEBRASKA

41°07'N-95°54'W

OFFUTT AFB (KOFF)

Amdt 1 22FEB24

# TACAN Y RWY 31

NC-2, 19 MAR 2026 to 16 APR 2026

NC-2, 19 MAR 2026 to 16 APR 2026