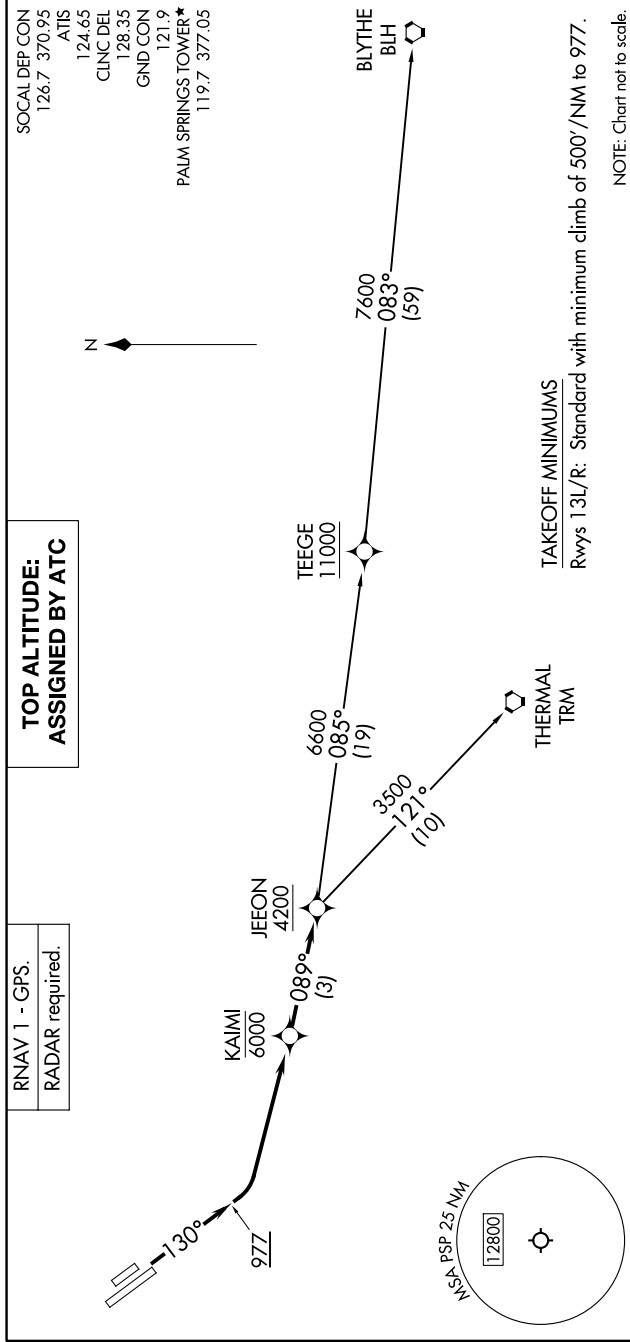


SW-3, 19 MAR 2026 to 16 APR 2026



**TOP ALTITUDE:
ASSIGNED BY ATC**

RNAV 1 - GPS.
RADAR required.

SOCAL DEP CON
126.7 370.95
ATIS
124.65
CLINC DEL
128.35
GND CON
121.9
PALM SPRINGS TOWER*
119.7 377.05

TAKEOFF MINIMUMS
Rwys 13L/R: Standard with minimum climb of 500'/NM to 977.

NOTE: Chart not to scale.

DEPARTURE ROUTE DESCRIPTION

TAKEOFF RUNWAYS 13L/R: Climb on heading 130° to 977, then left turn direct KAIMI at or below 6000, thence then on track 089° to cross JEEON at or above 4200, then on assigned (transition). Maintain ATC assigned altitude, expect filed altitude 10 minutes after departure.

BLYTHE TRANSITION (JEEON1.BLH)
THERMAL TRANSITION (JEEON1.TRM)

SW-3, 19 MAR 2026 to 16 APR 2026