

APP CRS	Rwy Ldg	6857
130°	TDZE	451
	Apt Elev	477

RNAV (RNP) Z RWY 13R

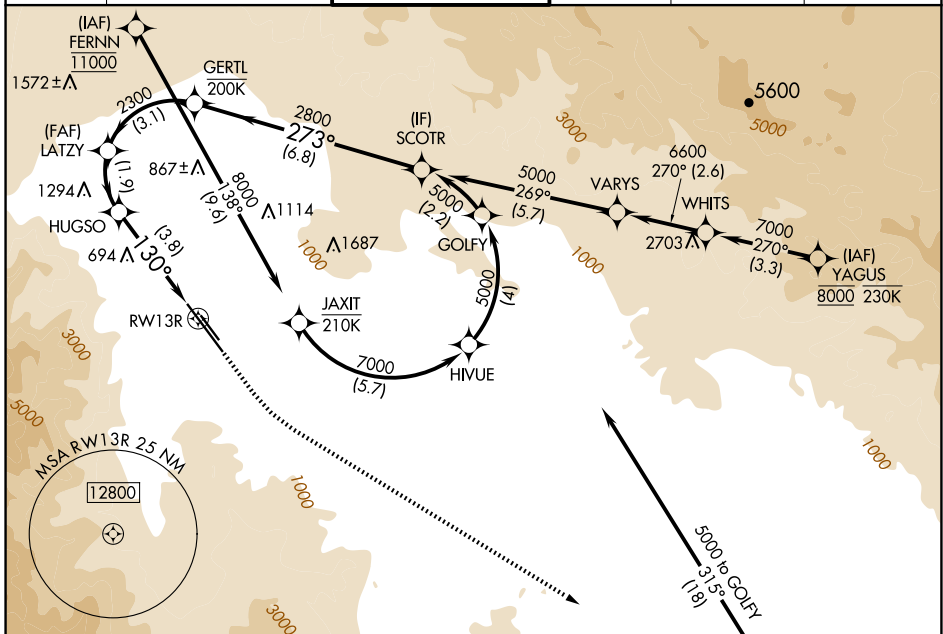
PALM SPRINGS INTL (PSP)

RNP AR APCH-GPS, RF, min RNP 0.50. Authorization required.

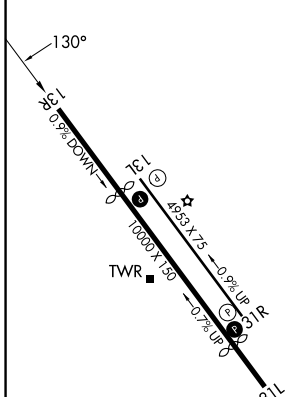
MISSED APPROACH: Climb to 900 then climbing left turn to 4000 direct TRM VORTAC and hold.

For uncompensated Baro-VNAV systems, procedure NA below 4°C or above 54°C.

ATIS	SOCAL APP CON	PALM SPRINGS TOWER*	GND CON	CLNC DEL	UNICOM
124.65	126.7 370.95 135.275 251.1	119.7 (CTAF) 377.05	121.9	128.35	122.95



ELEV 477	D	TDZE 451
----------	----------	----------



CATEGORY	A	B	C	D
RNP 0.10 DA		749-7/8	298 (300-7/8)	
RNP 0.30 DA		882-1 1/4	431 (500-1 1/4)	

HIRL Rwy 13R-31L
MIRL Rwy 13L-31R
REIL Rwy 13R and 31L
REIL Rwy 13L and 31R

PALM SPRINGS, CALIFORNIA
Amdt 2 12JUN25

33°50'N-116°30'W

PALM SPRINGS INTL (PSP) RNAV (RNP) Z RWY 13R

AUTHORIZATION REQUIRED

SW-3, 19 MAR 2026 to 16 APR 2026

SW-3, 19 MAR 2026 to 16 APR 2026