

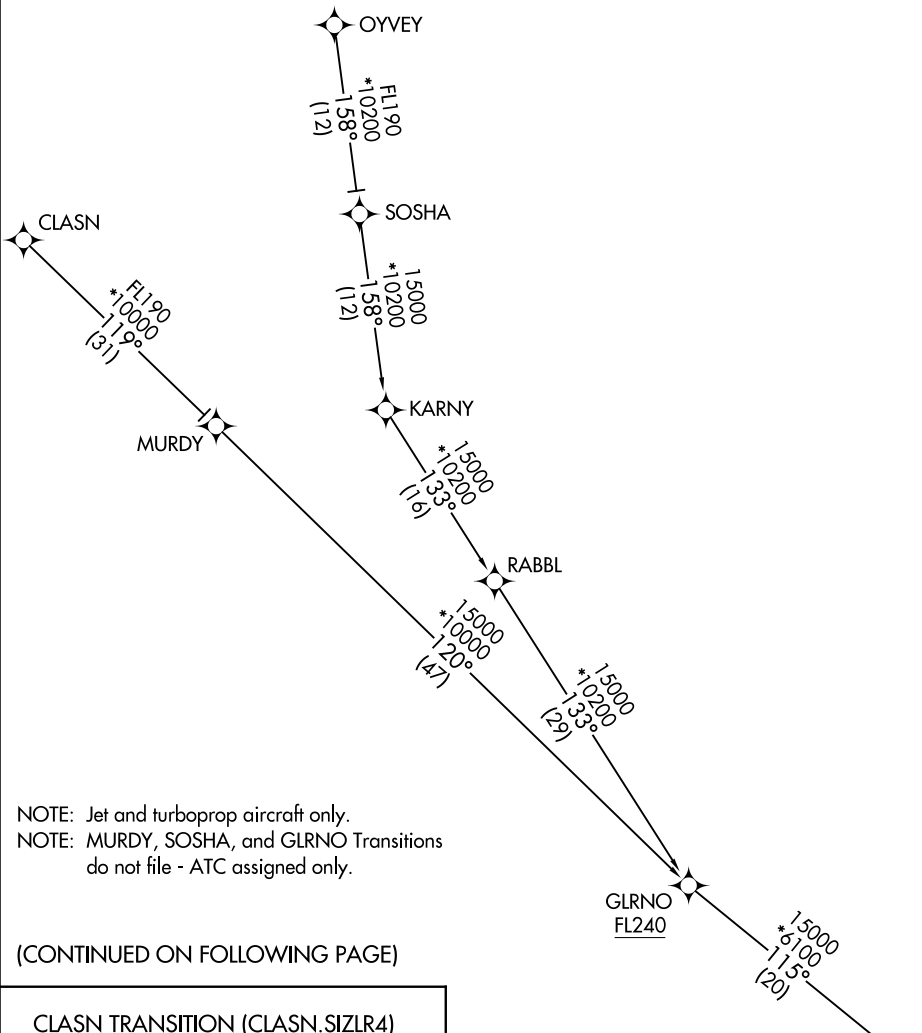
SIZLR FOUR ARRIVAL (RNAV) Transition Routes

PALM SPRINGS, CALIFORNIA

RNAV 1 - DME/DME/IRU or GPS.

RADAR required.

SOCAL APP CON
 134.0 278.3
 PSP ATIS
 124.65
 PALM SPRINGS TOWER*
 119.7 377.05

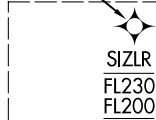


NOTE: Jet and turboprop aircraft only.
 NOTE: MURDY, SOSHA, and GLRNO Transitions do not file - ATC assigned only.

(CONTINUED ON FOLLOWING PAGE)

- CLASN TRANSITION (CLASN.SIZLR4)
- GLRNO TRANSITION (GLRNO.SIZLR4)
- MURDY TRANSITION (MURDY.SIZLR4)
- OYVEY TRANSITION (OYVEY.SIZLR4)
- SOSHA TRANSITION (SOSHA.SIZLR4)

NOTE: Chart not to scale.



See following page for arrival routes

SW-3, 19 MAR 2026 to 16 APR 2026

SW-3, 19 MAR 2026 to 16 APR 2026

SIZLR FOUR ARRIVAL (RNAV) Transition Routes

PALM SPRINGS, CALIFORNIA

RNAV 1 - DME/DME/IRU or GPS.

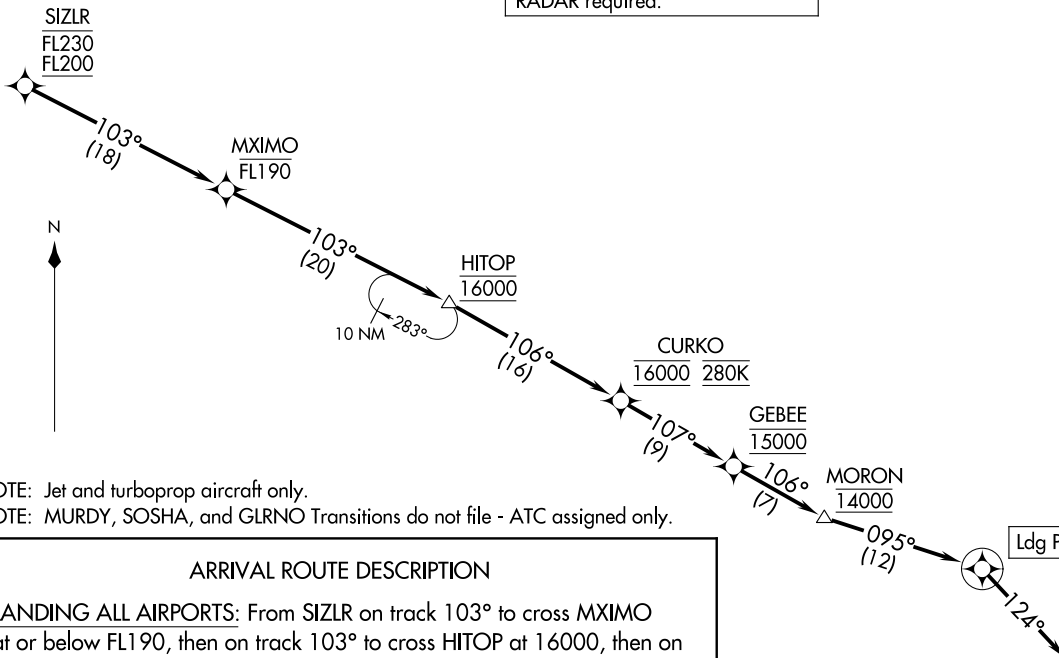
RADAR required.

SOCAL APP CON
134.0 278.3
PSP ATIS
124.65
PALM SPRINGS TOWER*
119.7 377.05

SIZL FOUR ARRIVAL (RNAV)
(SIZL.SIZL4) 12JUN25

Arrival Routes

PALM SPRINGS, CALIFORNIA



NOTE: Jet and turboprop aircraft only.
NOTE: MURDY, SOSHA, and GLRNO Transitions do not file - ATC assigned only.

ARRIVAL ROUTE DESCRIPTION

LANDING ALL AIRPORTS: From SIZLR on track 103° to cross MXIMO at or below FL190, then on track 103° to cross HITOP at 16000, then on track 106° to cross CURKO at 16000 and at 280K, then on track 107° to cross GEBEE at 15000, then on track 106° to cross MORON at 14000, then on track 095° to cross FERNN at 11000, then on track 124°. Expect assigned instrument approach or RADAR vectors to final approach course.

LOST COMMUNICATIONS: Landing PSP, TRM, UDD: Proceed to TRM VORTAC, then execute VOR approach for destination airport.

NOTE: Chart not to scale.

PALM SPRINGS INTL

BERMUDA DUNES

THERMAL TRM

JACQUELINE COCHRAN RGNL

(SIZL.SIZL4) 25163

Arrival Routes

PALM SPRINGS, CALIFORNIA

AL-545 (FAA)